

ONE CROWN PLACE

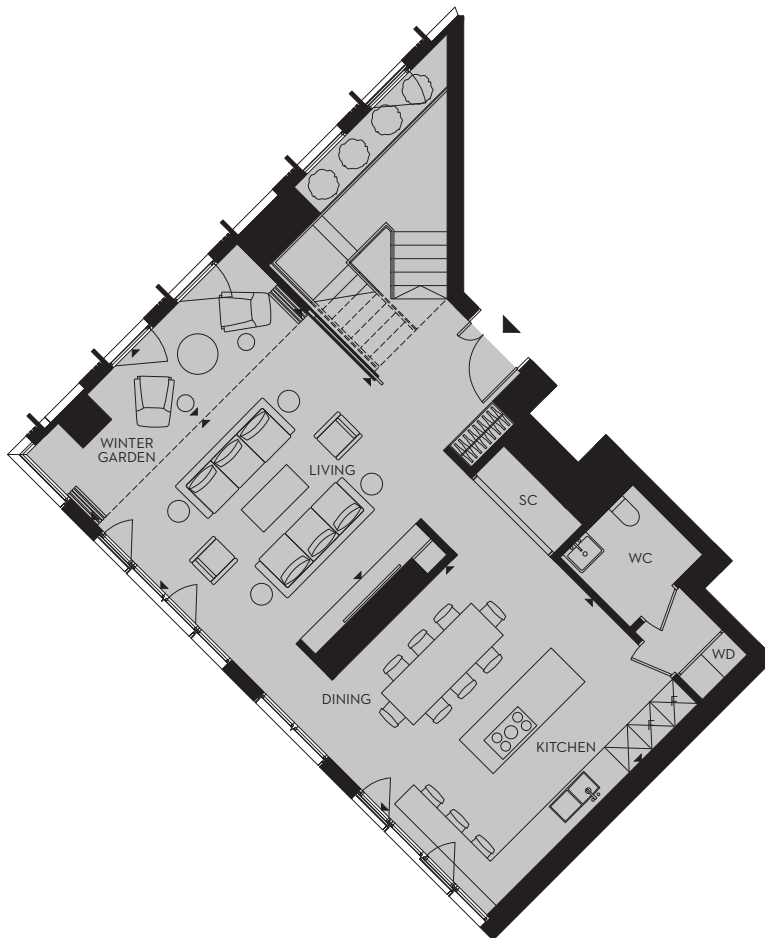
N2801

3 bedroom duplex apartment

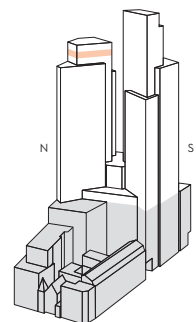
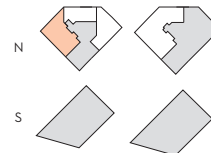
Lower Level

North

Floor 28



Total area	232sqm	2492sqft
Living room	5.56m × 4.18m	18'2" × 13'8"
Kitchen	5.56m × 5.06m	18'2" × 16'7"
Winter Garden	5.56m × 1.74m	18'2" × 5'8"



C – CUPBOARD E – ELECTRICAL ES – EN-SUITE FF – FRIDGE/FREEZER SC – SERVICE CUPBOARD WD – WASHER/DRYER AV – AUDIO VISUAL

Any areas, dimensions, measurements or distances are approximate. All floorplans are for approximate measurements only and intended to give a general indication of the proposed floor layout. All measurements are within a reasonable tolerance in accordance with the sales contract and are provided as Gross Internal Areas according to the Royal Institution of Chartered Surveyors Code of Measuring Practice. Kitchen and bathroom layouts are indicative only and subject to change. Furniture is shown for illustrative purposes only.

54 WILSON STREET, LONDON EC2A 2ER

020 7205 2697

ONECROWNPLACE.COM

ONE CROWN PLACE

N2801

3 bedroom duplex apartment

Upper Level

North

Floor 28



Total area

232sqm

2492sqft

Bedroom 1

5.56m × 4.58m

18'2" × 15'0"

Bedroom 2

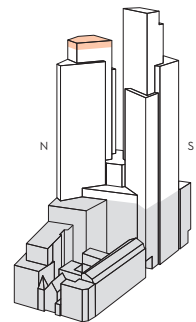
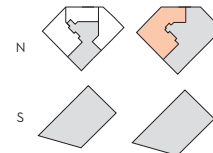
3.93m × 2.77m

12'10" × 9'1"

Bedroom 3

3.53m × 2.81m

11'6" × 9'2"



C – CUPBOARD E – ELECTRICAL ES – EN-SUITE FF – FRIDGE/FREEZER SC – SERVICE CUPBOARD WD – WASHER/DRYER AV – AUDIO VISUAL

Any areas, dimensions, measurements or distances are approximate. All floorplans are for approximate measurements only and intended to give a general indication of the proposed floor layout. All measurements are within a reasonable tolerance in accordance with the sales contract and are provided as Gross Internal Areas according to the Royal Institution of Chartered Surveyors Code of Measuring Practice. Kitchen and bathroom layouts are indicative only and subject to change. Furniture is shown for illustrative purposes only.

54 WILSON STREET, LONDON EC2A 2ER

020 7205 2697

ONECROWNPLACE.COM