

54 WILSON
STREET

ONE CROWN
PLACE



Construction
Traffic &
Emergency
Services only



Construction
Traffic &
Emergency
Services only

20

ST. CHAPL

THE LYNX BAR

SHOREDITCH
& THE CITY
FIND COMMON
GROUND

54 WILSON STREET OFFERING

- DESIGNED BY BGY ARCHITECTS
- 8 FLOORS OF FULLY REFURBISHED OFFICE SPACE
- EFFICIENT AND FLEXIBLE OPEN OFFICE FLOORPLATES
- RAW INDUSTRIAL AESTHETIC INCLUDING CONCRETE FLOORS AND EXPOSED SOFFITS
- 5TH FLOOR ROOF TERRACE
- EXCELLENT END OF TRIP FACILITIES

AREA SCHEDULE

TOTAL NET INTERNAL AREA*

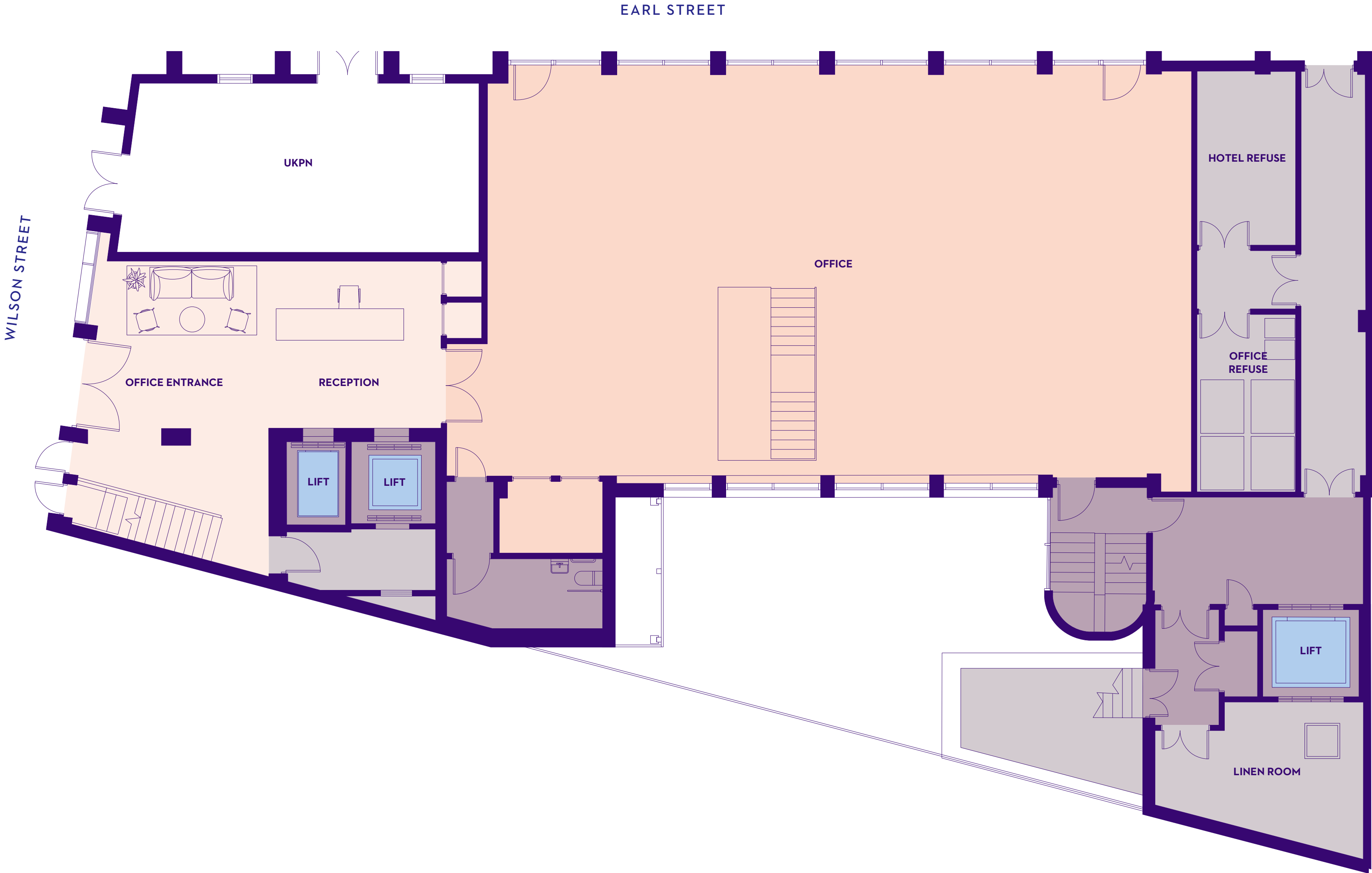
FLOOR 6	303 SQM	3,261 SQFT
FLOOR 5	240 SQM	2,583 SQFT
FLOOR 4	344 SQM	3,703 SQFT
FLOOR 3	343 SQM	3,692 SQFT
FLOOR 2	344 SQM	3,703 SQFT
FLOOR 1	327 SQM	3,520 SQFT
GROUND	184 SQM	1,981 SQFT
BASEMENT	168 SQM	1,808 SQFT
<hr/>		
TOTAL	2,253 SQM	24,251 SQFT

*THE ABOVE NET INTERNAL AREAS AS DEFINED BY THE RICS CODE OF MEASURING PRACTICE (6TH EDITION) ARE APPROXIMATE AND SUBJECT TO FINAL VERIFICATION.

GROUND

184
SQM NET INTERNAL AREA

1,981
SQFT NET INTERNAL AREA





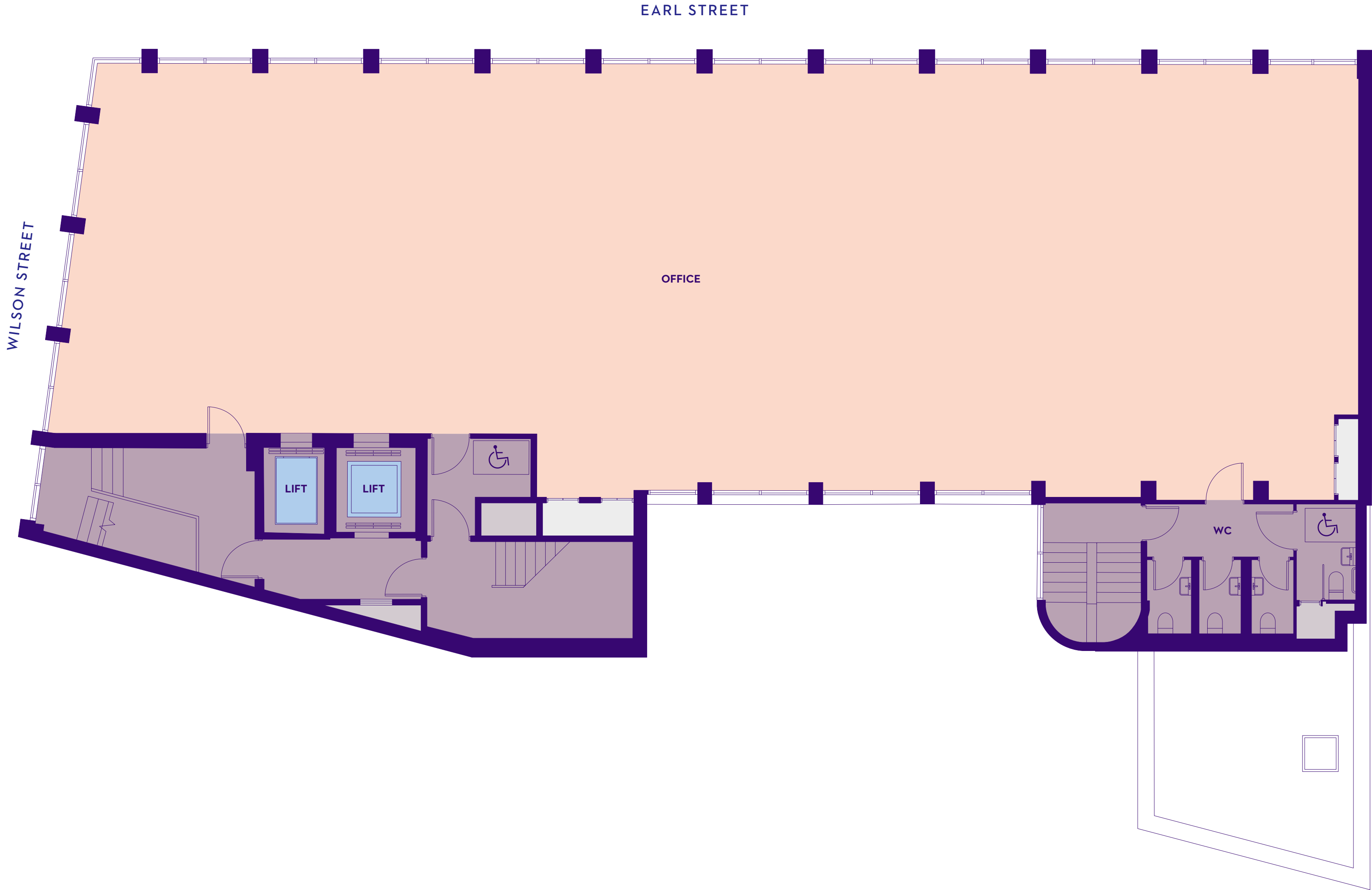
54 WILSON STREET

06	TENANT
05	TENANT
04	TENANT
03	TENANT
02	TENANT
01	TENANT
00	TENANT

FLOOR 1

327
SQM NET INTERNAL AREA

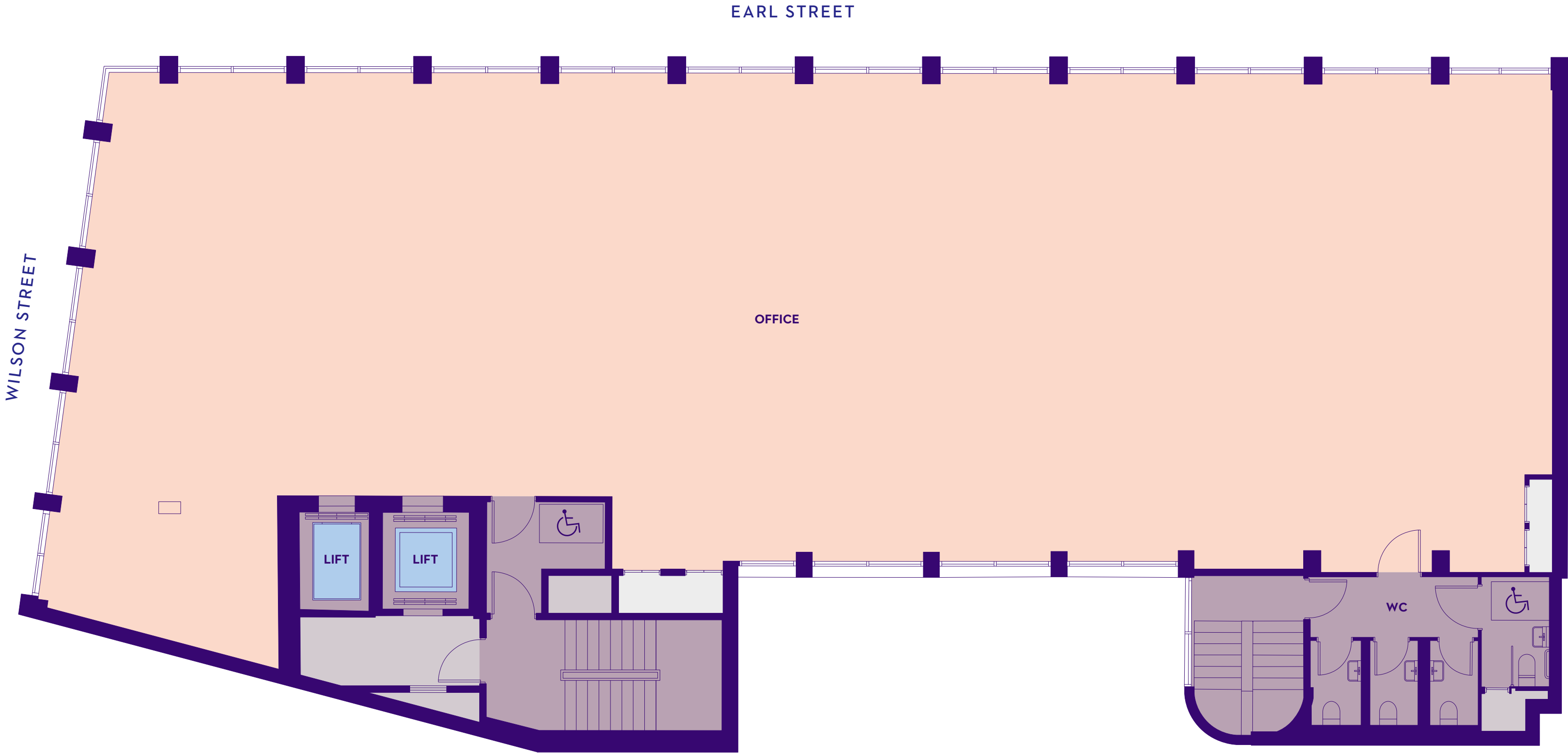
3,520
SQFT NET INTERNAL AREA



FLOORS 2-4

344
SQM NET INTERNAL AREA

3,703
SQFT NET INTERNAL AREA

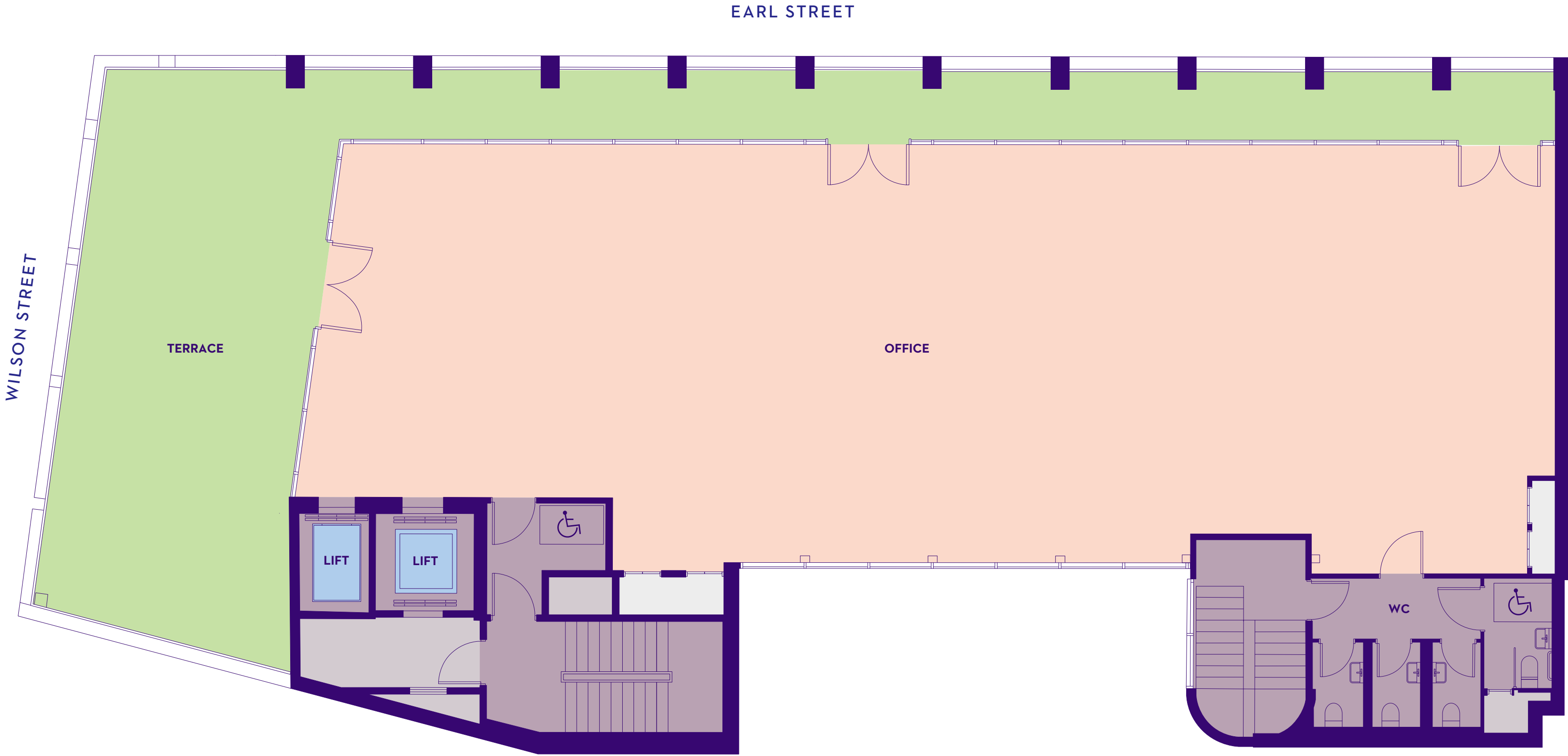


FLOOR 5

240
SQM NET INTERNAL AREA

2,583
SQFT NET INTERNAL AREA

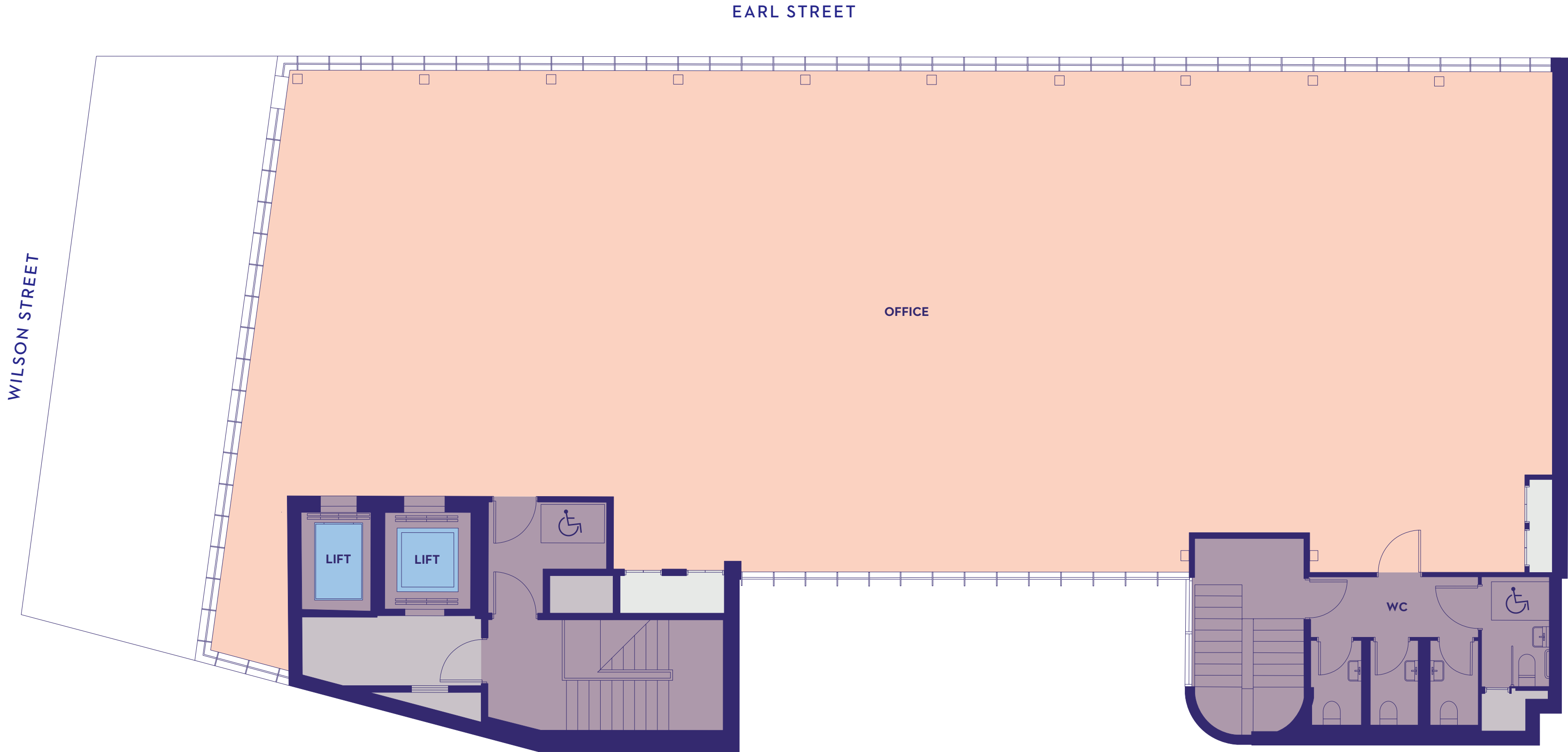
1,150
SQFT TERRACE



FLOOR 6

303
SQM NET INTERNAL AREA

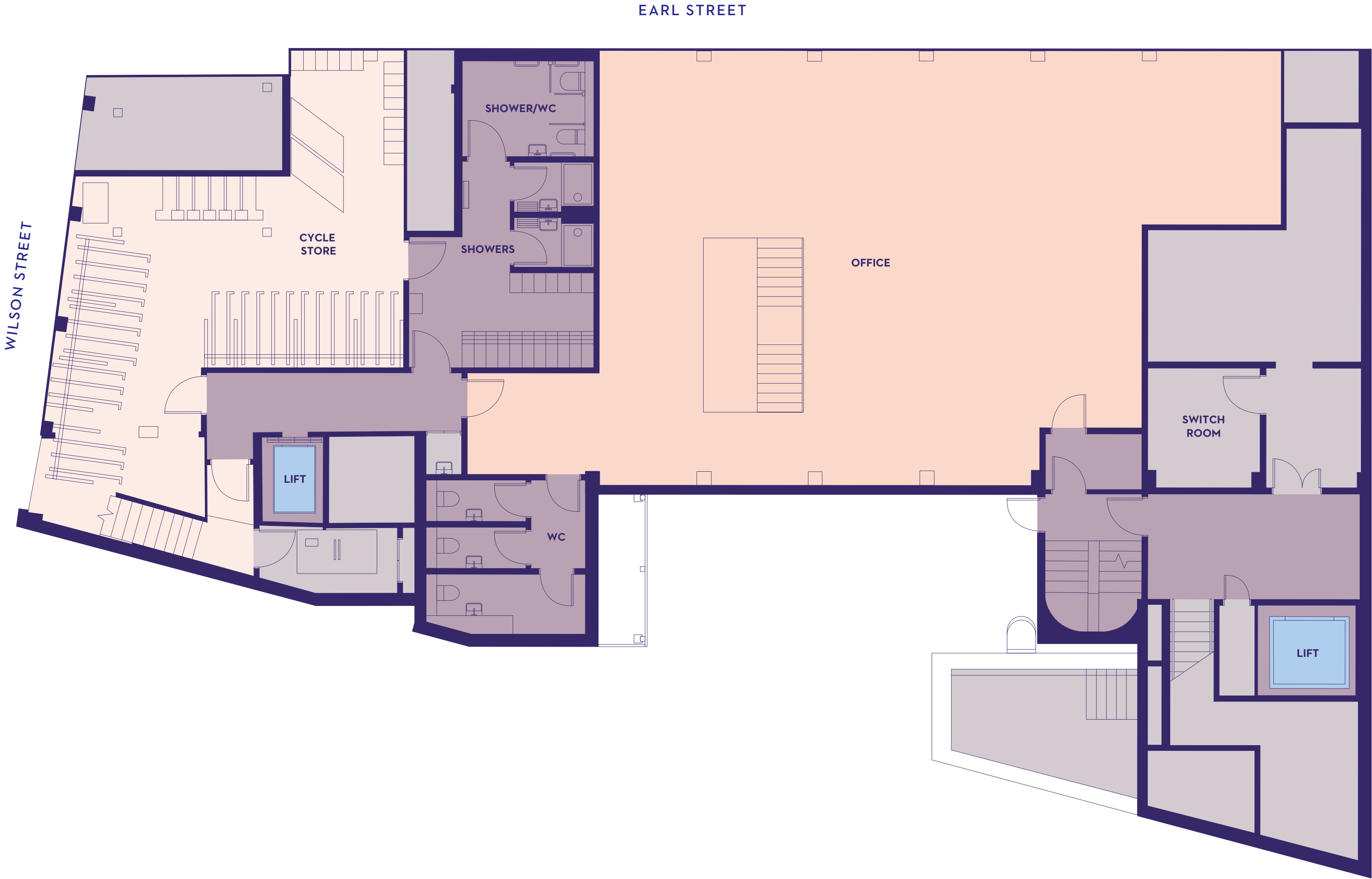
3,261
SQFT NET INTERNAL AREA



BASEMENT

168
SQM NET INTERNAL AREA

1,808
SQFT NET INTERNAL AREA



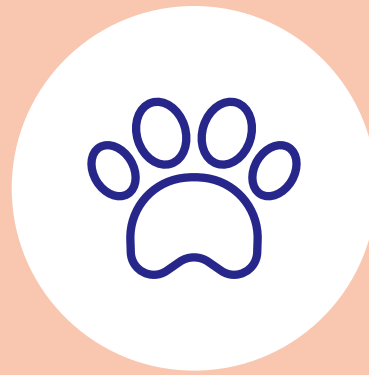




SPECIFICATION



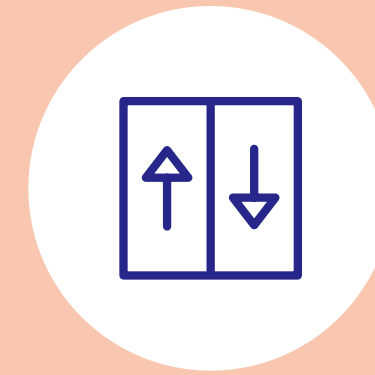
DEDICATED 5TH
FLOOR TERRACE



DOG
FRIENDLY



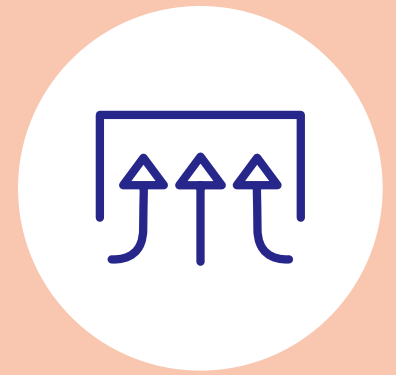
OFFICE OCCUPANCY
RATIO 1 PERSON: 8 SQM



TWO PASSENGER
LIFTS



64 CYCLE RACKS
IN BASEMENT



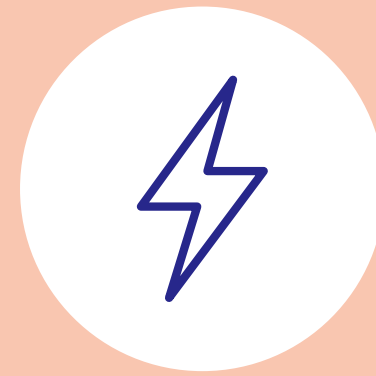
VRF AIR CONDITIONING
SYSTEM



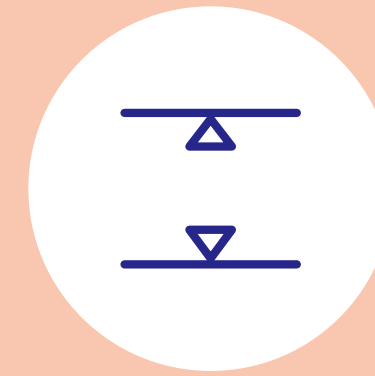
THREE
SHOWERS



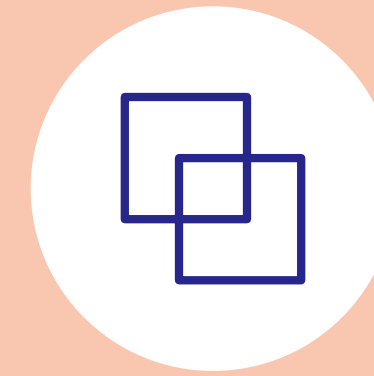
DESIGNED TO ACHIEVE
BREEAM EXCELLENT



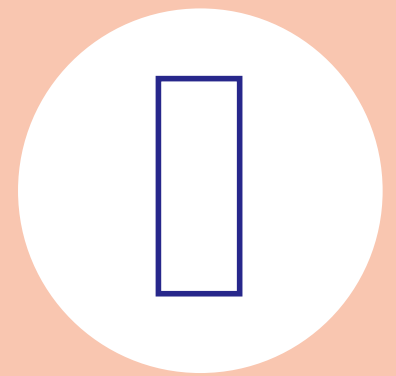
1500 KVA STANDBY
GENERATOR WITH
24 HOUR FUEL



FLOOR TO CEILING HEIGHT
2.8M ON 5-6TH FLOOR.
2.6M ON G-4TH FLOOR



RAISED FLOORS
TO 5-6TH FLOOR
(100MM OVERALL)



CLEAR COLUMN-FREE
FLOOR PLATES PROVIDE
EFFICIENT RUNS OF SPACE





MASTER PLAN



- Key
- 54 Wilson Street
 - Office
 - Retail
 - Hotel (Restaurant & Members' Club)
 - Residential
 - Services
 - Outdoor space

THE SCHEME IN NUMBERS

The One Crown Place development rises above a busy thoroughfare connecting two great neighbours: this is where Shoreditch picks up pace and the City has a browse.



54
WILSON STREET
DESIGNED BY AWARD
WINNING ARCHITECTS
BUCKLEY GRAY YEOMAN



41
ROOMS IN OUR
BOUTIQUE HOTEL WITH
RESTAURANT, BAR AND
PRIVATE MEMBERS CLUB



246
PRIVATE RESIDENTIAL
APARTMENTS



2
COURTYARD RESTAURANT
& PRIVATE MEMBERS CLUB



5,242
SQFT OF RETAIL SPACE
ACROSS THREE UNITS



3 MINS
WALK TO LIVERPOOL
STREET STATION



EXPLORE THE AREA

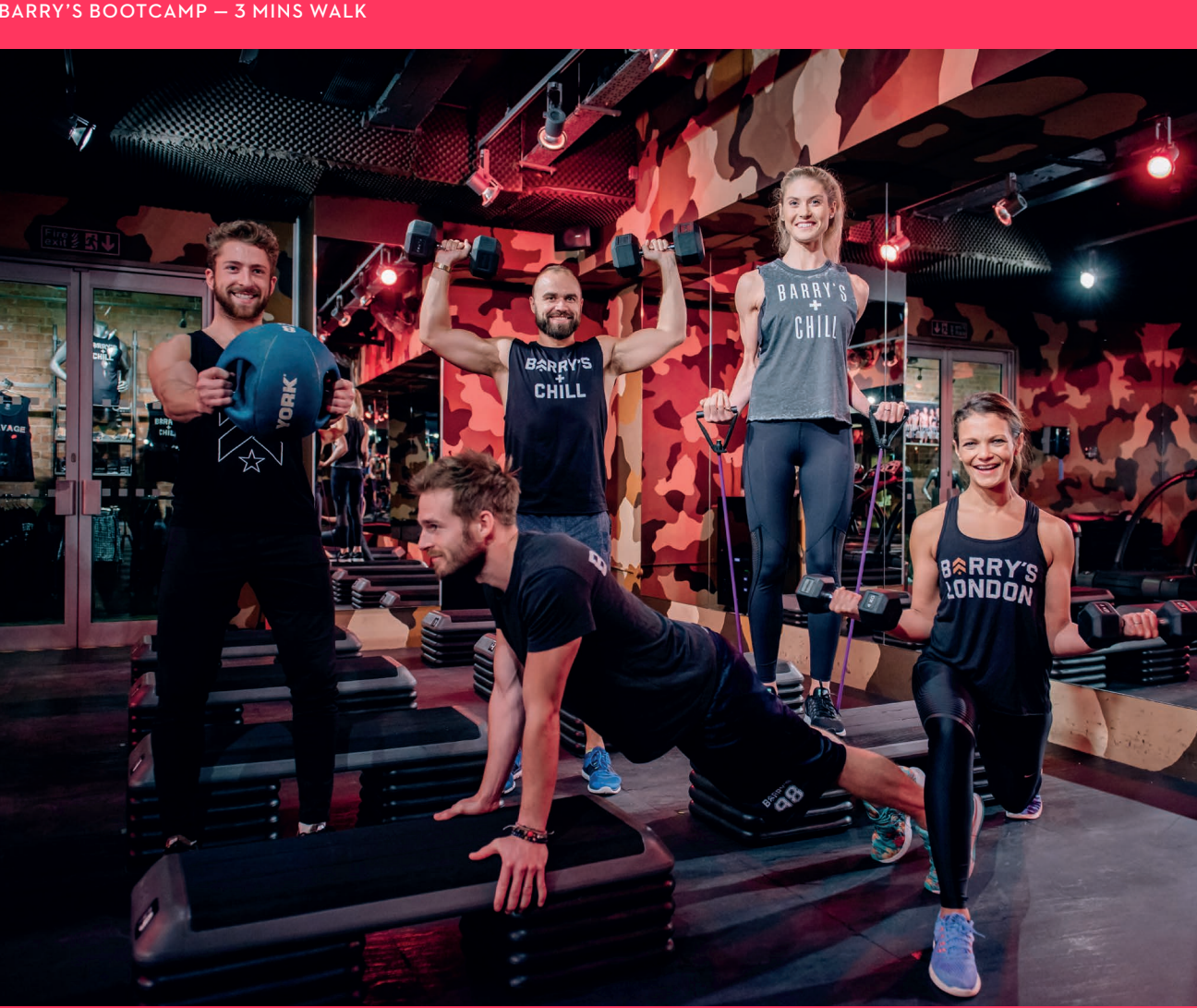
Three minutes’ walk from Liverpool Street Station and within earshot of Broadgate (just the other side of Sun Street), this is where the City loosens its tie and Shoreditch pulls up its socks.

Fashionable boutiques and covered dining experiences knit together beneath architectural icons and historic monuments. Renowned legal and financial service providers settle as far east as Spitalfields Market, while hungry young challenger banks thrive within the City’s ancient boundaries. A location embracing both impulsive individuality and refined sophistication.

GOOD COMPANY



BROADGATE CIRCLE – 3 MINS WALK



EATALY – 8 MINS WALK



EVERYMAN CINEMA – 3 MINS WALK



MAP

- Restaurants & cafés
- 1. City Social (Michelin star)
- 2. Sushi Samba
- 3. Mrs Foggs
- 4. Liverpool Street Grind
- 5. The Botanist
- 6. Franco Manca
- 7. Comptoir Libanais
- 8. Gaucho
- 9. Yauatcha
- 10. Kitty Hawk
- 11. Angler (Michelin star)
- 12. Bar Douro
- 13. Eataly
- 14. Beany Green
- 15. Galvin La Chapelle (Michelin star)
- 16. Beer & Buns & K10
- 17. Burdock
- 18. Haz
- 19. Aviary
- 20. Baraka
- 21. All located in Principal Place:
 - The Allegory
 - Polú Poké
 - Camino Shoreditch
 - RED Shoreditch
 - Black Sheep
- 22. Starbucks
- 23. Farmer J
- 24. Gloria
- 25. Dishoom
- 26. Oklava
- 27. Leroy (Michelin star)
- 28. Lyles (Michelin star)
- 29. Smoking Goat & BRAT (Michelin star)
- 30. Padella
- 31. Passo

- Street food and takeaway
 - 1. All located in Spitalfields Market:
 - Chai Guys
 - Yum Bun
 - Dirty Bagels
 - Coqbull
 - Indi-go
 - Climpson's Coffee Bar
 - Pleasant Lady Jian Bing
 - Merkamo Ethiopian
 - Pancake Box
 - Humble Crumble
 - Sud Italia
 - Wheelcake Island
 - Donovan's Bakehouse
 - The Duck Truck
 - 2. All located in Broadgate Circle:
 - HOP Vietnamese
 - Island Poké
 - Shoryu Ramen
 - 3. Wasabi Sushi & Bento
 - 4. Itsu
- Bars & entertainment
 - 1. Flight Club
 - 2. Long Arm Pub & Brewery
 - 3. The Flying Horse
 - 4. The Crown and Shuttle
 - 5. London Cocktail Club
 - 6. Old King's Head
 - 7. Village Underground
 - 8. Singer Tavern
 - 9. Tank and Paddle
 - 10. The Horse and Groom
 - 11. The Gun
 - 12. Shoreditch House
 - 13. Everyman

- Fitness
 - 1. IRebel
 - 2. Barry's Bootcamp
 - 3. Fitness First
 - 4. Frame
 - 5. KOBOX
 - 6. Virgin Active
 - 7. BLOK
 - 8. PureGym
- Hotels
 - 1. Andaz
 - 2. Montcalm Royal London
 - 3. Nobu Hotel
 - 4. South Place Hotel
 - 5. The Curtain
 - 6. The Hoxton
 - 7. Pan Pacific
- Shops
 - 1. Charles Tyrwhitt
 - 2. Hugo Boss
 - 3. Cos
 - 4. Whistles
 - 5. Marks & Spencer
 - 6. All located at at Spitalfields Market:
 - Rag & bone
 - Orlebar Brown
 - & Other Stories
 - Lululemon
 - 7. All located at 100 Liverpool Street:
 - Kielh's
 - Tommy Hilfiger
 - Reiss
 - Waterstones



TRAVEL TIMES



LIVERPOOL STREET
3 MINS

MOORGATE
5 MINS

OLD STREET
8 MINS

SHOREDITCH HIGH STREET
12 MINS



LONDON BRIDGE
5 MINS

KING'S CROSS
7 MINS

WATERLOO
11 MINS

VICTORIA
18 MINS



TOTTENHAM COURT ROAD
4 MINS

CANARY WHARF
6 MINS

PADDINGTON
10 MINS

HEATHROW
33 MINS

THE TEAM

MTD Group is a multinational infrastructure-based company head quartered in Kuala Lumpur, Malaysia. It is active in 15 countries with investment portfolios in properties & real estate, civil engineering & construction, manufacturing of pre-cast related products, infrastructure concessions (ranging from tolled highways, ports to IPP), and operations & maintenance.

MTD's Real Estate & Property Division develops and sells large integrated housing and community projects and high-end residential projects both locally and overseas. www.mtdgroup.com.my.

DEVELOPED BY

MTD

ADVISED BY

GPP | GreenPlace Partners

ADVISED BY

CBRE

ADVISED BY

savills

ARCHITECT

BGY

FOR MORE INFORMATION CONTACT:

CBRE

TOM MEIJER
M: +44 (0)75 4059 5379
E: TOM.MEIJER@CBRE.COM

CHRIS VYDRA
M: +44 (0)77 1061 8023
E: CHRIS.VYDRA@CBRE.COM

savills

STUART LAWSON
M: +44 (0)78 7055 5930
E: SLAWSON@SAVILLS.COM

JADE DEDMAN
M: +44 (0)78 0799 9783
E: JADE.DEDMAN@SAVILLS.COM

1. These particulars are set out as a general outline only for guidance to intending Purchasers or Lessees, and do not constitute any part of an offer or contract. Any intending Purchasers, Lessees or Third Parties should not rely on them as statements or representations of fact, but must satisfy themselves by inspection, searches, enquiries, surveys or otherwise as to their accuracy. CBRE Limited as such cannot be held responsible for any loss or damage including without limitation, indirect or consequential loss or damage, or any loss of profits resulting from direct or indirect actions based upon the content of these particulars. 2. All internal and external images of the development are Computer Generated Images and are indicative only. All images used, including computer generated images and view photography, are for illustrative purposes. Individual features may vary. Furniture shown in images is not included in sales. 3. All floor plans are for approximate measurements only. Exact internal areas, layouts and sizes may vary. All measurements are within a reasonable tolerance in accordance with the sales contract. 4. The development name One Crown Place is for marketing purposes only and the Post Office may not include this within the determined postal address. Made by me&dave. September 2021.

