

ONE CROWN PLACE

One Crown Place celebrates quality and design elevating the residents' experiences in all apartment levels from standard to uppermost premium. Imagined by KPF architects, two prismatic towers host brand new residences, rising 28 and 33 storeys into the sky.

At ground level stands a 6-storey building – home to 10,650sqm of high quality office space – a variety of retail units and a boutique hotel occupying sun street's elegant row of Georgian terraces. Innovative in design, warm in character and with every detail considered for its role in the bigger picture, this is striking architecture with a soulful core.

Apartment N2502 features:

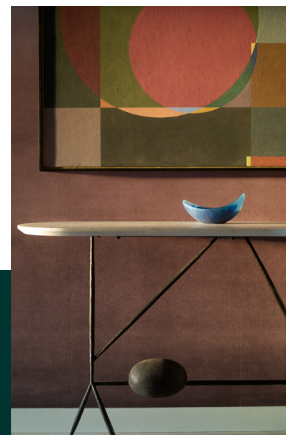
- Meticulously designed 3 bedroom apartment by renowned architect Bowler James Brindley
- Blend of contemporary elegance with intelligent zoning to create versatile spaces for both daily living and entertaining
- Oak herringbone flooring to hallway, living room, kitchen and primary bedroom
- Underfloor heating throughout and comfort cooling to reception room and bedrooms
- Indulgent bedrooms, designed as private sanctuaries
- Bespoke fittings such as B&B Italia wardrobes in all bedrooms
- Bespoke kitchen crafted by Arclinea
- Intricate brickwork porcelain tiling in all the bathrooms

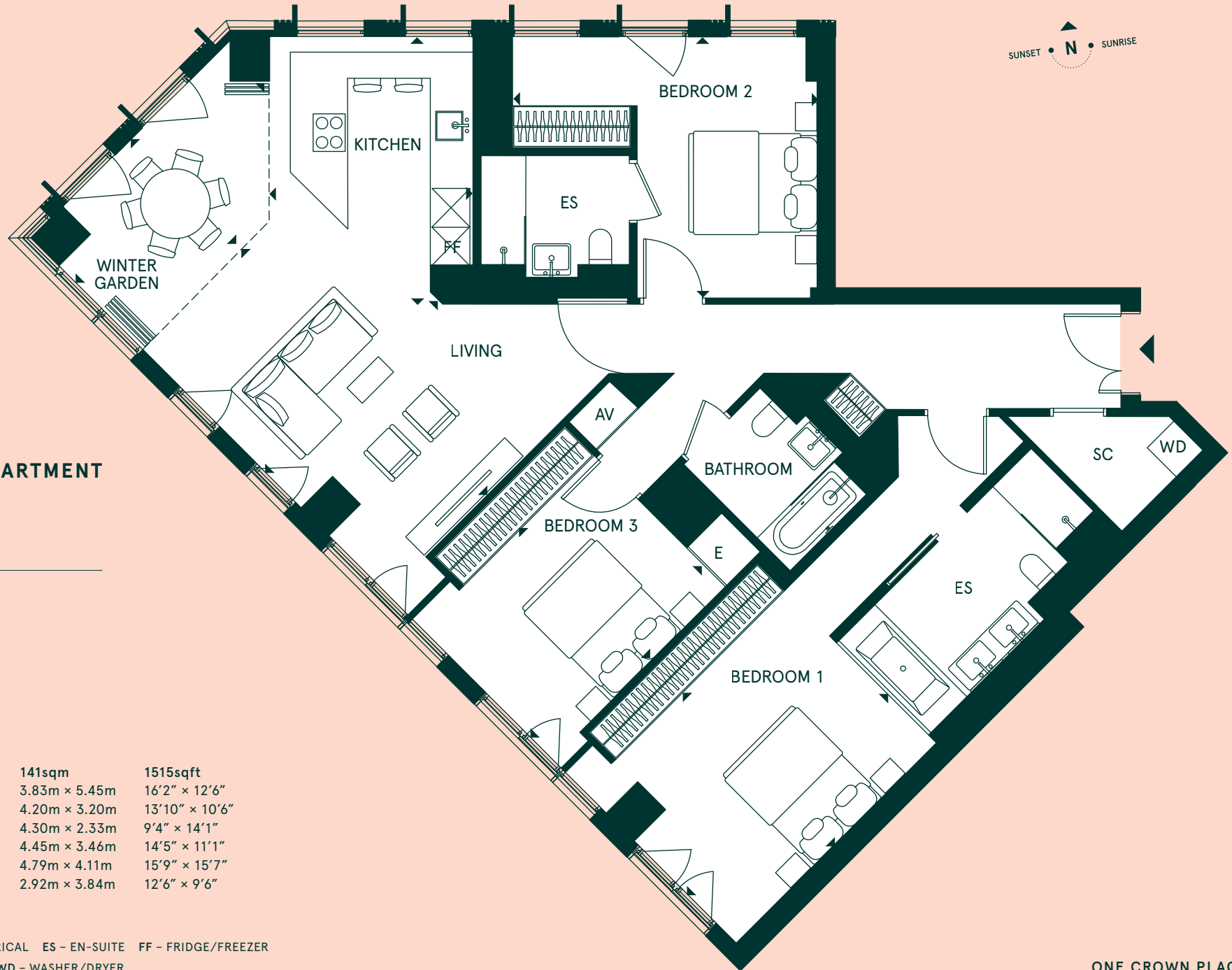
AMENITIES

- CONCIERGE (7 DAYS PER WEEK, 24HR)
- 7TH FLOOR COMMON AREA FOR RESIDENTS WHICH INCLUDES:
 - GYM
 - LOUNGE AND WORKHUB
 - MEETING ROOM AND SCREENING ROOM
 - PRIVATE TERRACE
- PRIVATE MEMBERS' CLUB AND BAR, OPERATED AND RUN BY BESPOKE HOTELS. RESIDENTS WILL GET A YEAR'S MEMBERSHIP FOR FREE ALONG WITH EXCLUSIVE PROMOTIONS IN THE HOTEL AND RESTAURANT

PARKING

NO PARKING SPACES BUT OPTION OF RENTING A SPACE IN NCP, FINSBURY SQUARE (1 MINUTE'S WALK).





3 BEDROOM APARTMENT
 NORTH
 FLOOR 25

£2,950,000

Total internal area	141sqm	1515sqft
Living room	3.83m × 5.45m	16'2" × 12'6"
Kitchen	4.20m × 3.20m	13'10" × 10'6"
Winter garden	4.30m × 2.33m	9'4" × 14'1"
Bedroom 1	4.45m × 3.46m	14'5" × 11'1"
Bedroom 2	4.79m × 4.11m	15'9" × 15'7"
Bedroom 3	2.92m × 3.84m	12'6" × 9'6"

C - CUPBOARD E - ELECTRICAL ES - EN-SUITE FF - FRIDGE/FREEZER
 SC - SERVICE CUPBOARD WD - WASHER/DRYER

ONE CROWN PLACE