

Sophie Ashby

COLLECTION

02

THE BUILDING

08

SOPHIE ASHBY

14

ENTRANCE HALL

18

LIVING SPACE

28

KITCHENS

34

BEDROOMS

38

BATHROOMS

49

FLOORPLANS
& FINISHES

82

AMENITIES

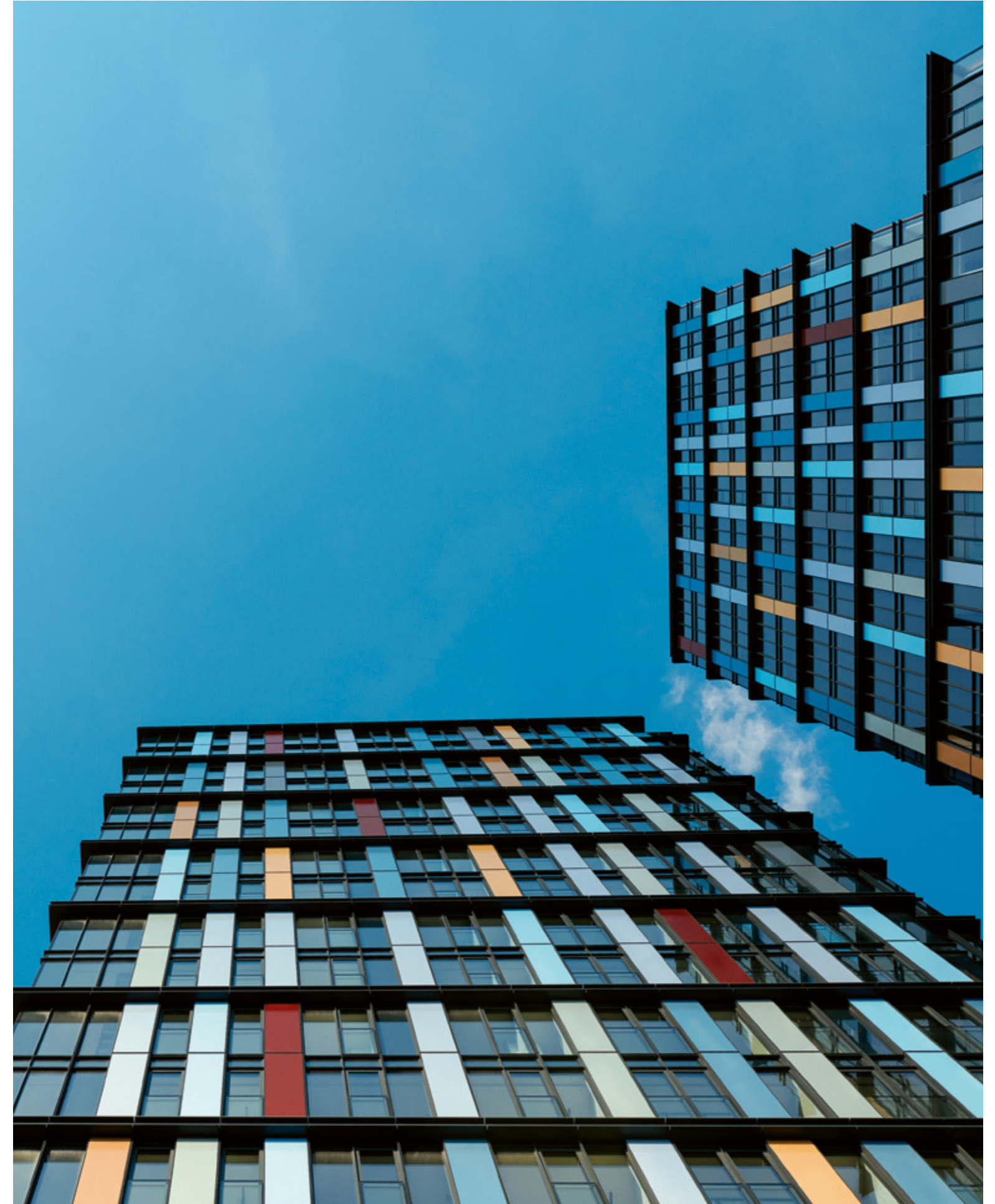
96

LOCATION

The building

One Crown Place is a dramatic new addition to London's iconic skyline. It is leading the way in perception change of living in the City, a location that now boasts a truly thriving and dynamic community.

The development confidently speaks for itself in quality, innovation and design. One Crown Place makes a welcome contrast to the capital's many glass towers, artfully combining original heritage buildings with striking modern architecture.





THE BUILDING



Terracotta façade



View from 7th floor terrace

THE BUILDING



7th floor landscaped garden



Skyline view from One Crown Place (Apt S2701)

Sophie Ashby

The Sophie Ashby Collection comprises eleven premium apartments on the upper floors of the North and South towers.

There are one and three bedroom apartments alongside three bedroom duplexes. Each has its own individual personality and unique, stunning view.



1 Art is central to my inspiration, and so is place – the way we respond to and are in turn shaped by it. We've curated pieces from Hackney's rich source of local emerging artists and galleries, both for the penthouses and for the inviting communal spaces we've designed.

I believe the things we surround ourselves with should make us feel alive and connect us to the spaces we inhabit; this is ultimately what I hope for the residents who will live in these unique homes. ■

Sophie Ashby



Individuality that
speaks for itself



Entrance hall

Along with craftsmanship, the emphasis is on the beauty of natural materials and, in reference to the local area, a juxtaposition of the old alongside the new. Each one of these eleven premium apartments has been lovingly curated to create a totally unique home.





Entrance hall and staircase (Apt S2701)



Entrance hall featuring engineered oak flooring with inlaid marble 'rug'

Living space

Influenced by the original Georgian terrace that forms part of One Crown Place, Sophie and her team have looked to the beautifully soft palette of the Georgian period. The era is often referred to as 'The age of elegance' and modern elegance is what defines these sumptuous interiors.





Living room and dining area (Apt N2801)



Living room with double height ceilings (Apt S2701)



View from above (Apt S2701)



Dining area looking through to the kitchen (Apt S2701)



Living room (Aprs S2901, S3001, S3101)

Kitchens

The kitchen provides a fitting focal point for the heart of the home. Each kitchen includes high-end V-ZUG appliances, contrasting wall units with quartz worktops and natural stone splashbacks.







Breakfast bar and kitchen (Apts S2901, S3001, S3101)



Kitchen and dining space (Apt N2503)

Bedrooms

Throughout the apartments, deep saturated shades of colour have been skilfully blended with lighter tones. The material feel of the environment has also been carefully considered. In the bedrooms, the white lacquer oak veneer wardrobe doors have been elegantly crafted, with the tactile luxury of their soft leather wrap pull-handles adding a superior finish.



BEDROOMS



Principal bedroom (Apt S2701)



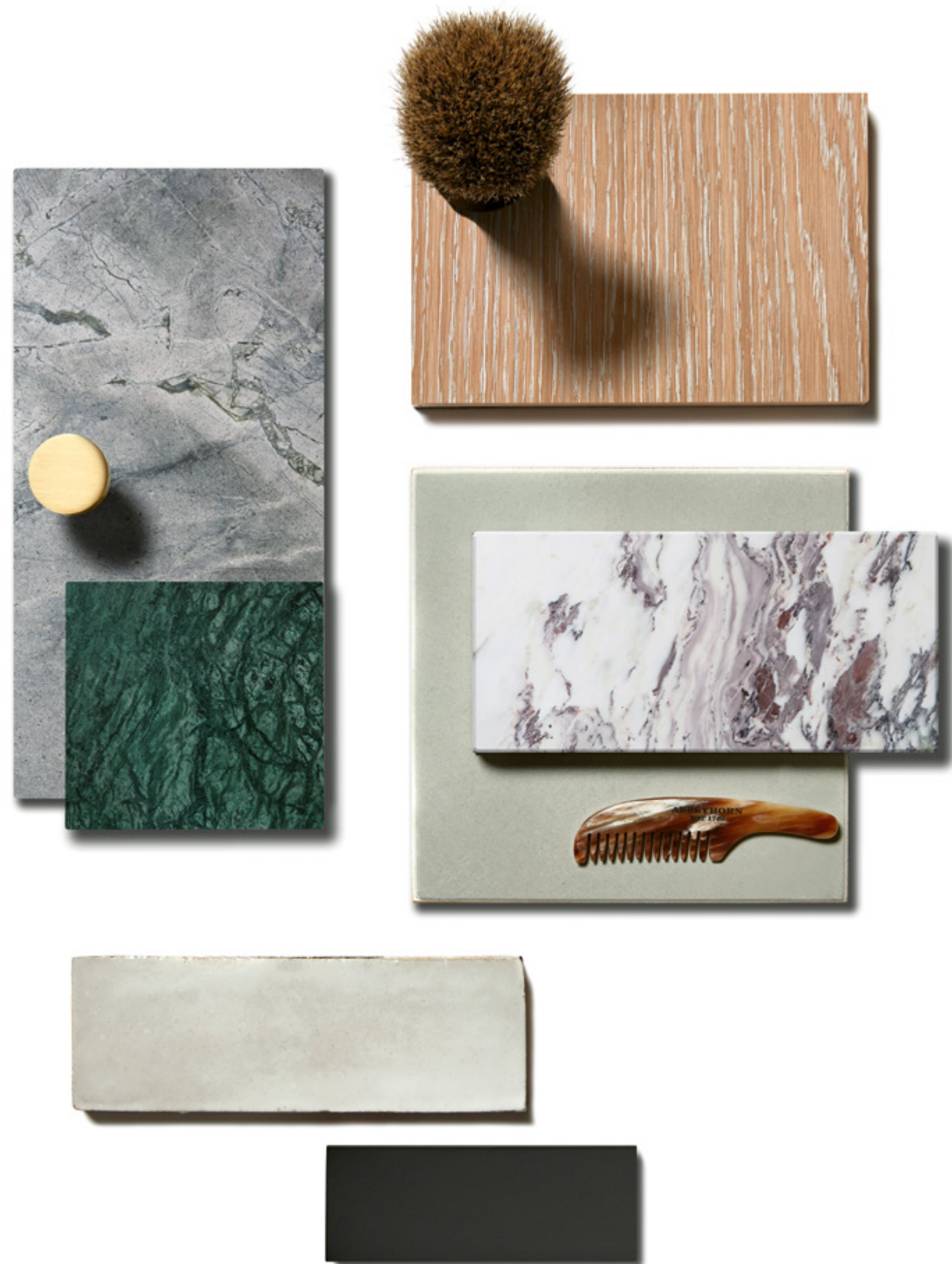
Third bedroom and dressing area (Apt S2701)

BEDROOMS

Bathrooms

Classic clean lines and richly contrasting materials define the bathrooms. Set against muted polished plaster and natural stone, the beautiful bespoke vanity units are crafted from deep green marble above oak drawers, finished with brass handles.

The generously proportioned walk-in showers are finished in white marble, offset by contemporary matt black fittings.





Principal bedroom en-suite (Apt N2801)



Principal bedroom en-suite (Apt S2701)

BATHROOMS



Indicative bathroom materials (Apts S2701, S3301)



Second bedroom en-suite (Apt S2701)

BATHROOMS



Third bedroom en-suite (Apt S2701)



Indicative bathroom materials (Apts S2701, S3301)



Powder room (Apt S2701)

We have designed homes full of character and personality, layering authentic and tactile materials.

Sophie Ashby



First floor landing and walkway (Apt N2503)

Floorplans and finishes

One Bedroom Apartment

NORTH TOWER - FLOOR 27 - APARTMENT 02

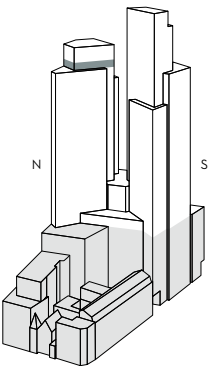
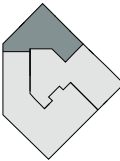
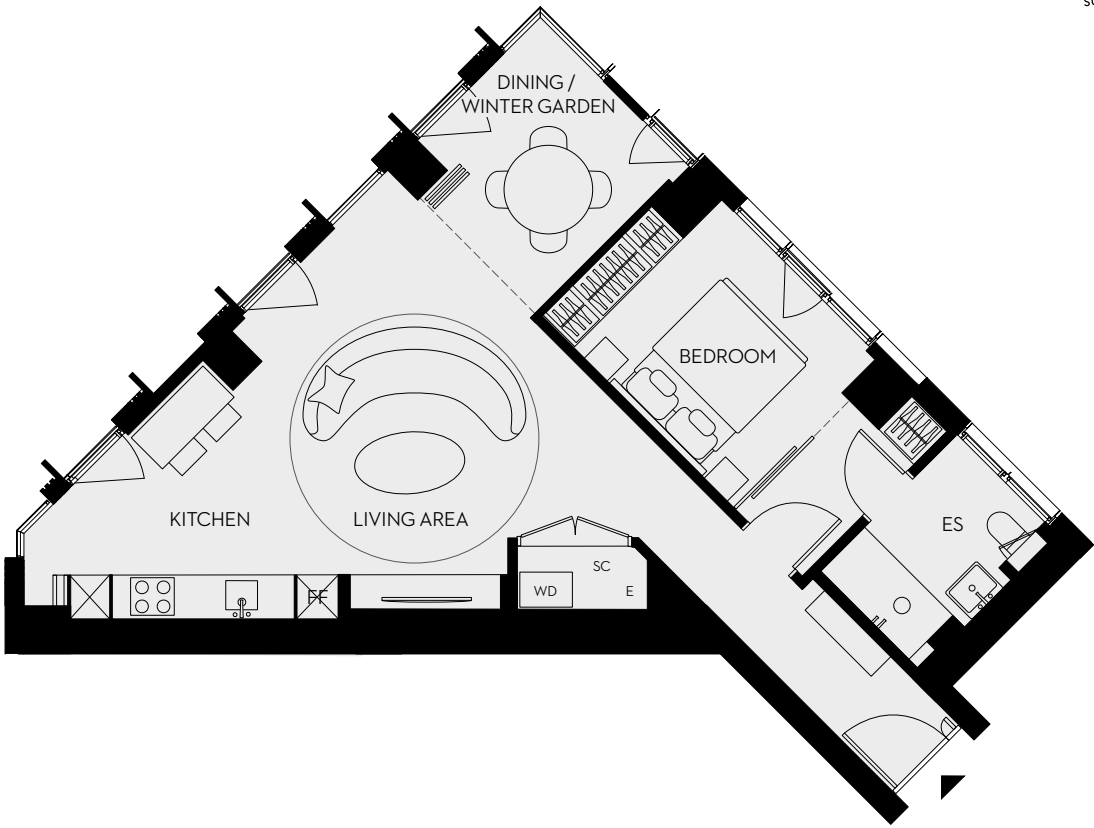
N2702

Total area
67 sq m
721 sq ft

Living space/Kitchen
29.8 sq m
321 sq ft

Bedroom
12.7 sq m
137 sq ft

Winter Garden
7.5 sq m
81 sq ft



Scale 1:150

E – Electrical ES – En-suite FF – Fridge/Freezer
SC – Service cupboard WC – Powder room WD – Washer/Dryer

One Bedroom Apartment

NORTH TOWER - FLOOR 27 - APARTMENT 02

KITCHEN

Convivium Elegant kitchen by B&B Italia

Tall cabinetry units: Vertical grain timber veneer door (Fossil Oak) with anthracite melamine carcass interior

Base cabinetry units: Vertical grain timber veneer door (Fossil Oak) with anthracite melamine carcass interior

Wall cabinetry units: Matt finish lacquer doors and drawers (Grigio Luce 86LC) with anthracite melamine carcass interior

Splashback: Natural stone, Breccia Capraia, honed finish

Worktop: Quartz by Caesarstone, 'Snow', honed finish

Under-mounted enamelled sink by Dornbracht with single lever mixer tap by Dornbracht

Appliances as indicated below by V-ZUG or equivalent:

Combination oven (steam) with purchaser option for microwave combination oven in lieu of steam if required

Induction hob
Integrated extractor
Integrated fridge
Integrated freezer
Integrated dishwasher

Mobile bar-island accessory

BATHROOM

Natural stone floor and wall tiles

Natural stone shower enclosure

Frameless glass shower screen

Vanity assembly comprising bespoke joinery with profiled oak slats, natural stone sink surround and splashback, under-mounted basin, integrated mirror

Matt black mixer tap

Matt black shower

Black heated towel rail

Wall-hung WC with concealed cistern, soft close seat and dual flush plate

FLOORING

Engineered oak flooring to hallway, living areas, kitchen and bedroom

DOORS

Apartment entrance door: Flush face with black grey lacquer finish

Apartment internal doors: Brushed oak timber veneer, vertical grain with white lacquer finish

Glazed black metal bi-folding doors to Winter Garden

Satin brass finish ironmongery

LIVING ROOM

Bespoke joinery unit, vertical grain timber veneer, Fossil Oak

WARDROBES

Bedroom wardrobes: Fitted wardrobes with brushed oak timber veneer, vertical grain with white lacquer finish door fronts, artisan leather-wrapped pull-handles. Carcass interior comprising anthracite melamine, linen finish

Hallways: Doors in brushed oak timber veneer, vertical grain, white lacquer finish with fitted carcassing behind comprising anthracite melamine, linen finish

Satin brass finish ironmongery

Internals to all wardrobes to include tailored modules including shelving, LED lighting, hanging rails and drawers

GENERAL

Lighting and electrical

KNX controlled LED downlights to all rooms

KNX control provides localised scene setting via room switch plate or via mobile app

LED feature lighting to bathroom joinery and wardrobes

Dimmable 5 amp lighting and 13 amp power circuits

Sockets and lighting face plates generally are satin brass finish with black plastic inserts. Kitchen sockets are black metal with black plastic inserts

RJ45 data points at TV locations in living room and bedrooms with immediate access to fast fibre data networks

Heating and cooling

Underfloor heating throughout all apartments

Comfort cooling to habitable rooms

Utility room

Free-standing non-integrated combination washer dryer by Miele

RESIDENTS' AMENITIES

Full range of amenities including residents' lounge, cinema room, work hub, fitness suite, private dining room and treatment room

Communal landscaped roof terrace

24-hour concierge

24-hour on-site security with CCTV monitoring

Access control to all building entrances

Hotel preferential access and one-year complimentary membership

One Bedroom Apartment

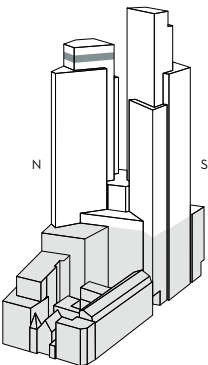
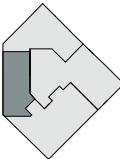
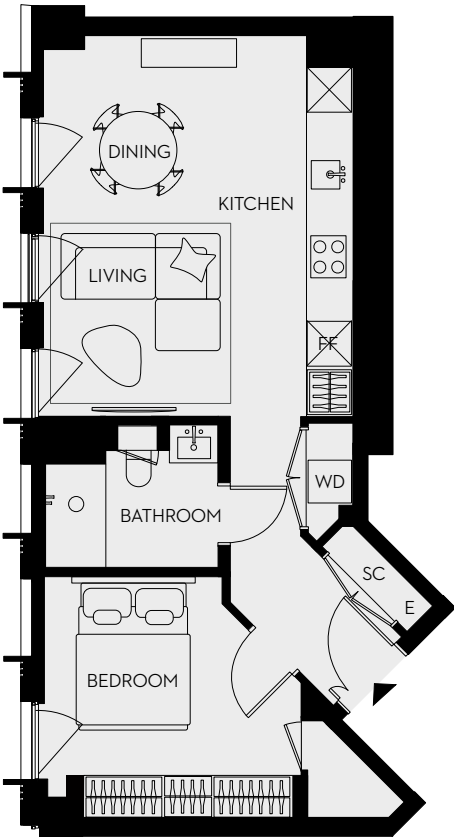
NORTH TOWER - FLOOR 28 - APARTMENT 02

N2802

Total area
51 sq m
549 sq ft

Living space/Kitchen
23.5 sq m
253 sq ft

Bedroom
12.5 sq m
135 sq ft



Scale 1:150

E – Electrical ES – En-suite FF – Fridge/Freezer
SC – Service cupboard WC – Powder room WD – Washer/Dryer

One Bedroom Apartment

NORTH TOWER - FLOOR 28 - APARTMENT 02

KITCHEN

Convivium Elegant kitchen by B&B Italia

Tall cabinetry units: Vertical grain timber veneer door (Fossil Oak) with anthracite melamine carcass interior

Base cabinetry units: Vertical grain timber veneer door (Fossil Oak) with anthracite melamine carcass interior

Wall cabinetry units: Matt finish lacquer doors and drawers (Grigio Luce 86LC) with anthracite melamine carcass interior

Splashback: Natural stone, Breccia Capraia, honed finish

Worktop: Quartz by Caesarstone, ‘Snow’, honed finish

Under-mounted enamelled sink by Dornbracht with single lever mixer tap by Dornbracht

Appliances as indicated below by V-ZUG or equivalent:

Combination oven (steam) with purchaser option for microwave combination oven in lieu of steam if required

Induction hob
Integrated extractor
Integrated fridge
Integrated freezer
Integrated dishwasher

BATHROOM

Natural stone floor and wall tiles

Natural stone shower enclosure

Frameless glass shower screen

Vanity assembly comprising bespoke joinery with profiled oak slats, natural stone sink surround and splashback, under-mounted basin, integrated mirror

Matt black mixer tap

Matt black shower

Black heated towel rail

Wall-hung WC with concealed cistern, soft close seat and dual flush plate

FLOORING

Engineered oak flooring to hallway, living areas, kitchen and bedroom

DOORS

Apartment entrance door: Flush face with black grey lacquer finish

Apartment internal doors: Brushed oak timber veneer, vertical grain with white lacquer finish

Satin brass finish ironmongery

WARDROBES

Bedroom wardrobes: Fitted wardrobes with brushed oak timber veneer, vertical grain with white lacquer finish door fronts, artisan leather-wrapped pull-handles. Carcass interior comprising anthracite melamine, linen finish

Hallways: Doors in brushed oak timber veneer, vertical grain, white lacquer finish with fitted carcassing behind comprising anthracite melamine, linen finish

Satin brass finish ironmongery

Internals to all wardrobes to include tailored modules including shelving, LED lighting, hanging rails and drawers

GENERAL

Lighting and electrical

KNX controlled LED downlights to all rooms.

KNX control provides localised scene setting via room switch plate or via mobile app

LED feature lighting to bathroom joinery and wardrobes

Heating and cooling

Underfloor heating throughout all apartments

Comfort cooling to habitable rooms

Utility room

Free-standing non-integrated combination washer dryer by Miele

RESIDENTS’ AMENITIES

Full range of amenities including residents’ lounge, cinema room, work hub, fitness suite, private dining room and treatment room

Communal landscaped roof terrace

24-hour concierge

24-hour on-site security with CCTV monitoring

Access control to all building entrances

Hotel preferential access and one-year complimentary membership

One Bedroom Apartment

NORTH TOWER - FLOOR 28 - APARTMENT 03

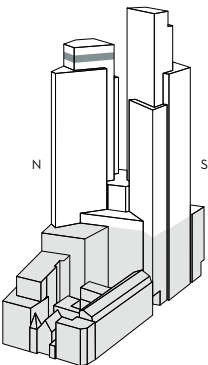
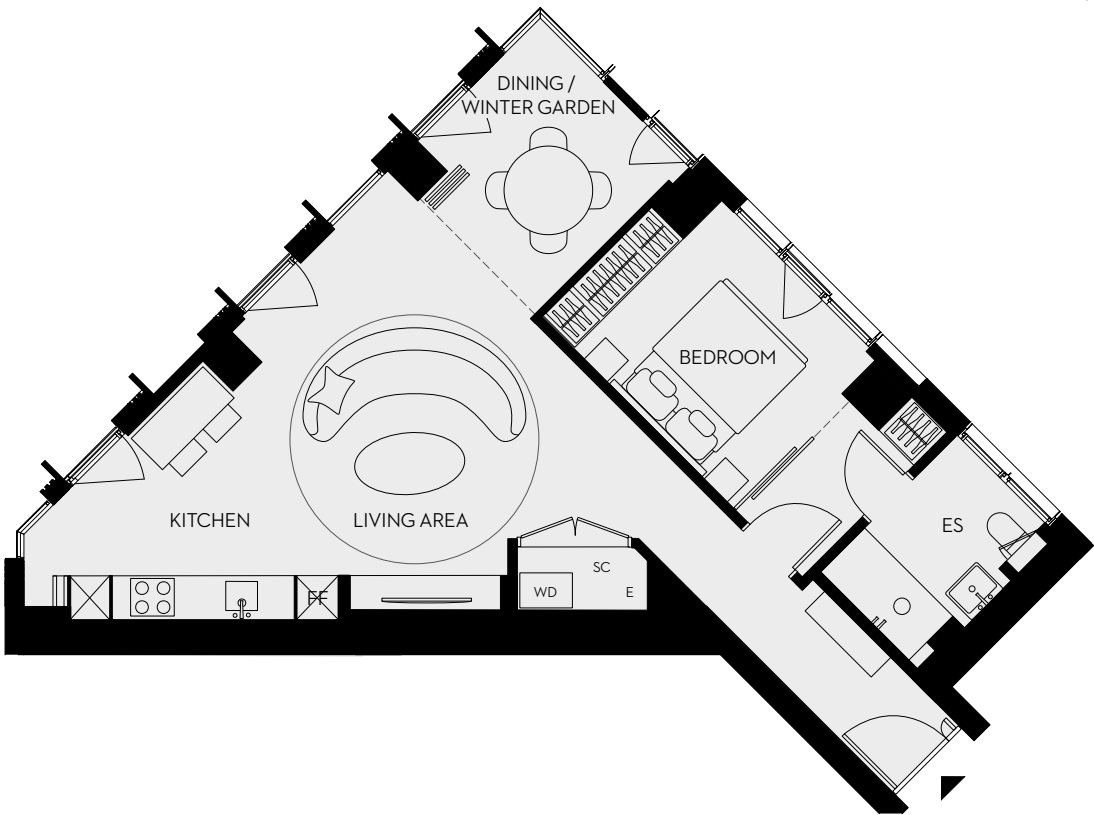
N2803

Total area
67.5 sq m
727 sq ft

Living space/Kitchen
30.2 sq m
325 sq ft

Bedroom
12.7 sq m
137 sq ft

Winter Garden
7.6 sq m
82 sq ft



Scale 1:150

E – Electrical ES – En-suite FF – Fridge/Freezer
SC – Service cupboard WC – Powder room WD – Washer/Dryer

One Bedroom Apartment

NORTH TOWER - FLOOR 28 - APARTMENT 03

KITCHEN

Convivium Elegant kitchen by B&B Italia

Tall cabinetry units: Vertical grain timber veneer door (Fossil Oak) with anthracite melamine carcass interior

Base cabinetry units: Vertical grain timber veneer door (Fossil Oak) with anthracite melamine carcass interior

Wall cabinetry units: Matt finish lacquer doors and drawers (Grigio Luce 86LC) with anthracite melamine carcass interior

Splashback: Natural stone, Breccia Capraia, honed finish

Worktop: Quartz by Caesarstone, 'Snow', honed finish

Under-mounted enamelled sink by Dornbracht with single lever mixer tap by Dornbracht

Appliances as indicated below by V-ZUG or equivalent:

Combination oven (steam) with purchaser option for microwave combination oven in lieu of steam if required

Induction hob
Integrated extractor
Integrated fridge
Integrated freezer
Integrated dishwasher

Mobile bar-island accessory

BATHROOM

Natural stone floor and wall tiles

Natural stone shower enclosure

Frameless glass shower screen

Vanity assembly comprising bespoke joinery with profiled oak slats, natural stone sink surround and splashback, under-mounted basin, integrated mirror

Matt black mixer tap

Matt black shower

Black heated towel rail

Wall-hung WC with concealed cistern, soft close seat and dual flush plate

FLOORING

Engineered oak flooring to hallway, living areas, kitchen and bedroom

DOORS

Apartment entrance door: Flush face with black grey lacquer finish

Apartment internal doors: Brushed oak timber veneer, vertical grain with white lacquer finish

Glazed black metal bi-folding doors to Winter Garden

Satin brass finish ironmongery

LIVING ROOM

Bespoke joinery unit, vertical grain timber veneer, Fossil Oak

WARDROBES

Bedroom wardrobes: Fitted wardrobes with brushed oak timber veneer, vertical grain with white lacquer finish door fronts, artisan leather-wrapped pull-handles. Carcass interior comprising anthracite melamine, linen finish

Hallways: Doors in brushed oak timber veneer, vertical grain, white lacquer finish with fitted carcassing behind comprising anthracite melamine, linen finish

Satin brass finish ironmongery

Internals to all wardrobes to include tailored modules including shelving, LED lighting, hanging rails and drawers

GENERAL

Lighting and electrical

KNX controlled LED downlights to all rooms

KNX control provides localised scene setting via room switch plate or via mobile app

LED feature lighting to bathroom joinery and wardrobes

Dimmable 5 amp lighting and 13 amp power circuits

Sockets and lighting face plates generally are satin brass finish with black plastic inserts. Kitchen sockets are black metal with black plastic inserts

RJ45 data points at TV locations in living room and bedrooms with immediate access to fast fibre data networks

Heating and cooling

Underfloor heating throughout all apartments

Comfort cooling to habitable rooms

Utility room

Free-standing non-integrated combination washer dryer by Miele

RESIDENTS' AMENITIES

Full range of amenities including residents' lounge, cinema room, work hub, fitness suite, private dining room and treatment room

Communal landscaped roof terrace

24-hour concierge

24-hour on-site security with CCTV monitoring

Access control to all building entrances

Hotel preferential access and one-year complimentary membership

Three Bedroom Apartment

NORTH TOWER - FLOOR 27 - APARTMENT 01

N2701

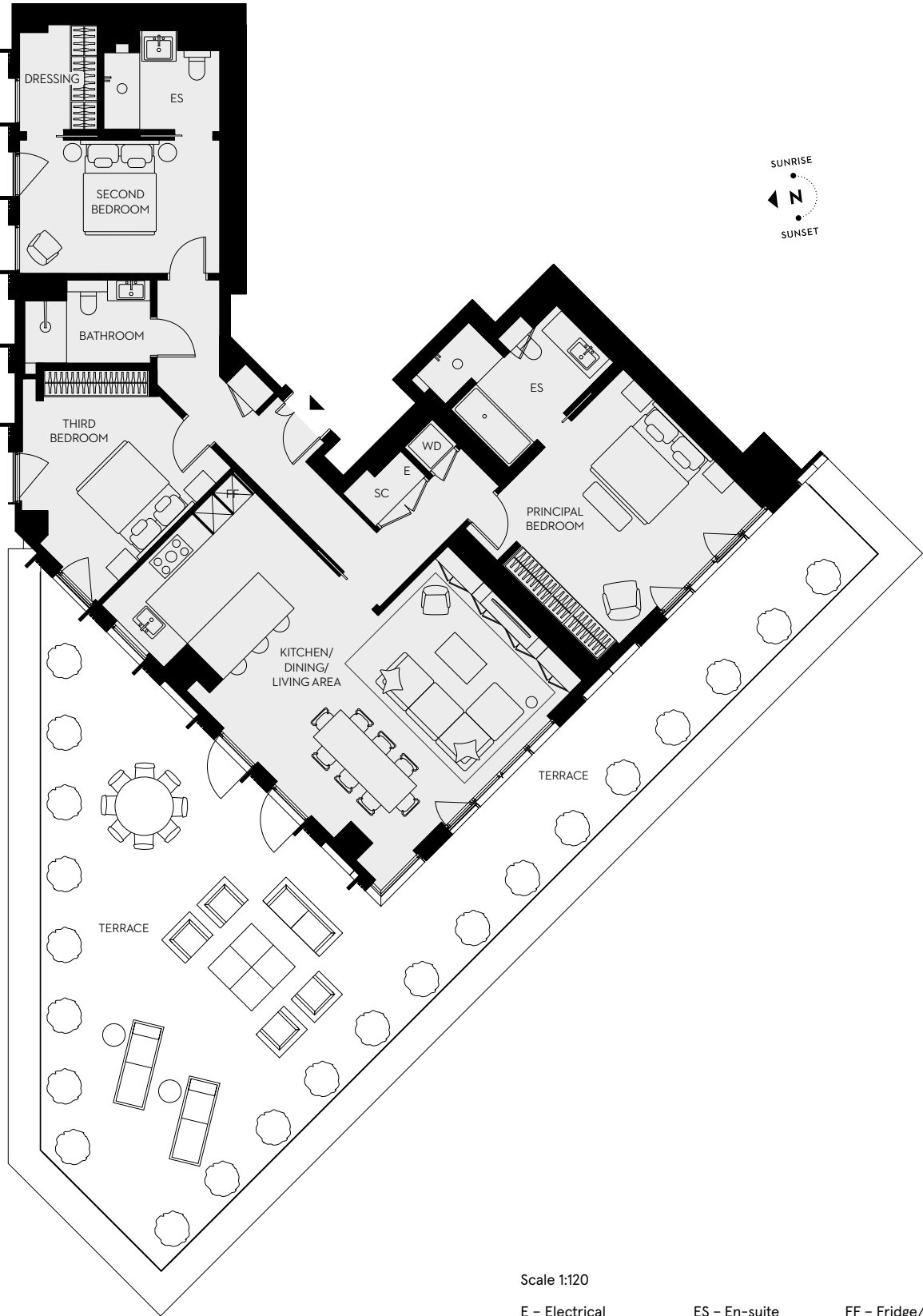
Total area
150.6 sq m
1621 sq ft

Living space/Kitchen
45.6 sq m
491 sq ft

Bedroom 1
21.1 sq m
227 sq ft

Bedroom 2
17 sq m
183 sq ft

Bedroom 3
15.3 sq m
165 sq ft



Scale 1:120

E - Electrical ES - En-suite FF - Fridge/Freezer
SC - Service cupboard WC - Powder room WD - Washer/Dryer

Three Bedroom Apartment

NORTH TOWER - FLOOR 27 - APARTMENT 01

KITCHEN

Convivium Elegant kitchen by B&B Italia

Tall cabinetry units: Vertical grain timber veneer door (Fossil Oak) with anthracite melamine carcass interior

Base cabinetry units: Matt finish lacquer doors and drawers (Grigio Luce 86LC) with anthracite melamine carcass interior

Wall cabinetry units: Matt finish lacquer doors and drawers (Grigio Luce 86LC) with anthracite melamine carcass interior

Splashback: Natural stone, Breccia Capraia, honed finish

Worktop: Quartz by Caesarstone, 'Snow', honed finish

Under-mounted enamelled sink by Dornbracht with single lever mixer tap by Dornbracht

Appliances as indicated below by V-ZUG or equivalent:

Combination oven (steam) with purchaser option for microwave combination oven in lieu of steam if required

Induction hob
Integrated extractor
Integrated fridge
Integrated freezer
Integrated dishwasher
Wine cooler

LIVING ROOM

Bespoke joinery unit in slatted oak frontage with integrated storage. Matt lacquer finish, black grey

PRINCIPAL BEDROOM EN-SUITE

Natural stone floor tiles

Natural stone shower enclosure

Frameless glass shower screen

Polished plaster, natural stone and hand-glazed tile wall finishes

Bespoke vanity unit with natural stone top, under-mounted basin(s), oak cabinetry, black metal framework and matt black mixer tap

Black metal-framed mirror with integrated LED illumination

Matt black ceiling-mounted shower

Black heated towel rail

Wall-hung WC with concealed cistern, soft close seat and dual flush plate

SECOND BEDROOM EN-SUITE

Natural stone floor tiles

Natural stone and painted wall finish

Bespoke vanity unit with natural stone top, countertop basin, oak cabinetry and matt black mixer tap

Satin brass finish framed mirror

Frameless glass shower screen

Matt black mixer tap

Matt black shower

Black heated towel rail

Wall-hung WC with concealed cistern, soft close seat and dual flush plate

FAMILY BATHROOM

Natural stone floor and wall tiles

Natural stone shower enclosure

Frameless glass shower screen

Vanity assembly comprising bespoke joinery with profiled oak slats, natural stone sink surround and splashback, under-mounted basin, integrated mirror

Matt black mixer tap

Matt black shower

Black heated towel rail

Wall-hung WC with concealed cistern, soft close seat and dual flush plate

FLOORING

Engineered oak flooring to hallway, living areas, kitchen and bedrooms

DOORS

Apartment entrance door: Flush face with black grey lacquer finish

Apartment internal doors: Brushed oak timber veneer, vertical grain with white lacquer finish

Satin brass finish ironmongery

WARDROBES & HALL STORAGE

Bedroom wardrobes: Fitted wardrobes with brushed oak timber veneer, vertical grain with white lacquer finish door fronts, artisan leather-wrapped pull-handles. Carcass interior comprising anthracite melamine, linen finish

Hallways: Doors in brushed oak timber veneer, vertical grain, white lacquer finish with fitted carcassing behind comprising anthracite melamine, linen finish

Satin brass finish ironmongery

Internals to all wardrobes to include tailored modules including shelving, LED lighting, hanging rails and drawers

GENERAL

Lighting and electrical

KNX controlled LED downlights to all rooms

KNX control provides localised scene setting via room switch plate or via mobile app

LED feature lighting to bathroom joinery and wardrobes

Dimmable 5 amp lighting and 13 amp power circuits

Sockets and lighting face plates generally are satin brass finish with black plastic inserts. Kitchen sockets are black metal with black plastic inserts

RJ45 data points at TV locations in living room and bedrooms with immediate access to fast fibre data networks

Heating and cooling

Underfloor heating throughout all apartments

Comfort cooling to habitable rooms

Utility cupboard

Free-standing non-integrated combination washer dryer by Miele

TERRACE

Glazed balustrade

Granite paving, flamed finish

RESIDENTS' AMENITIES

Full range of amenities including residents' lounge, cinema room, work hub, fitness suite, private dining room and treatment room

Communal landscaped roof terrace

24-hour concierge

24-hour on-site security with CCTV monitoring

Access control to all building entrances

Hotel preferential access and one-year complimentary membership

Three Bedroom Apartment

SOUTH TOWER - FLOOR 29 - APARTMENT 01

S2901

Total area
149.2 sq m
1606 sq ft

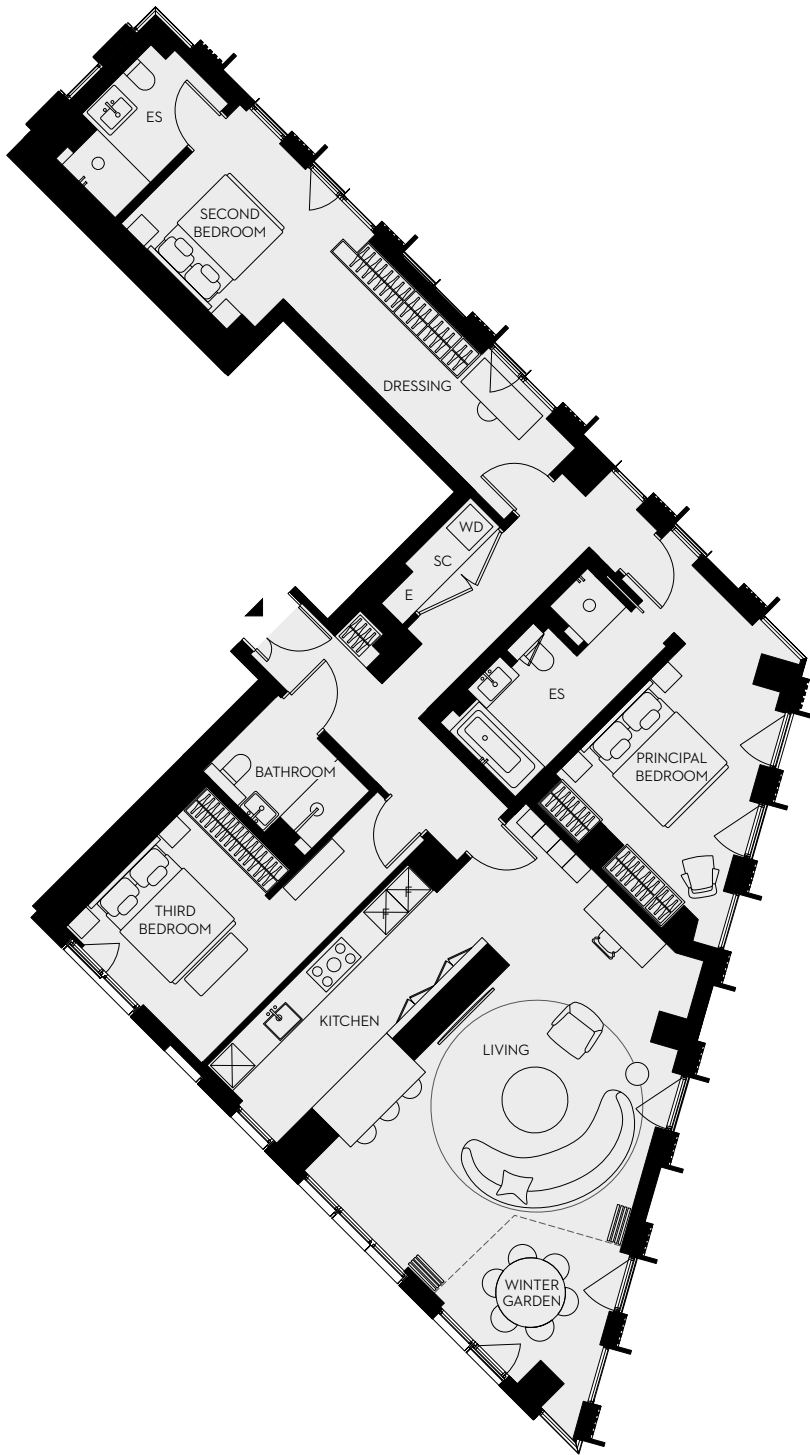
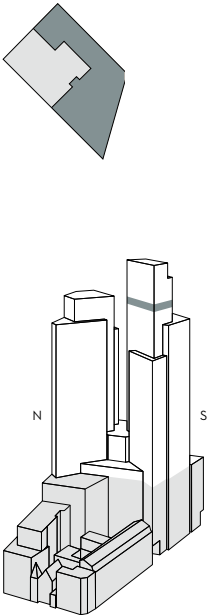
Living space/Kitchen
43.1 sq m
464 sq ft

Bedroom 1
16.1 sq m
173 sq ft

Bedroom 2
19.2 sq m
207 sq ft

Bedroom 3
14.7 sq m
158 sq ft

Winter Garden
7.2 sq m
78 sq ft



Scale 1:120

E – Electrical ES – En-suite FF – Fridge/Freezer
SC – Service cupboard WC – Powder room WD – Washer/Dryer

Three Bedroom Apartment

SOUTH TOWER - FLOOR 29 - APARTMENT 01

KITCHEN

Convivium Elegant kitchen by B&B Italia

Tall cabinetry units: Vertical grain timber veneer door (Fossil Oak) with anthracite melamine carcass interior

Base cabinetry units: Matt finish lacquer doors and drawers (Grigio Luce 86LC) with anthracite melamine carcass interior and vertical grain timber veneer door (Fossil Oak) with anthracite melamine carcass interior

Wall cabinetry units: Black anodised aluminium frame, Stopsol glass, vertical grain timber veneer carcass (Fossil Oak)

Splashback: Natural stone, Breccia Capraia, honed finish

Worktop: Quartz by Caesarstone, ‘Snow’, honed finish

Under-mounted enamelled sink by Dornbracht with single lever mixer tap by Dornbracht

Appliances as indicated below by V-ZUG or equivalent:

Combination oven (steam) with purchaser option for microwave combination oven in lieu of steam if required

Downdraft induction hob
Integrated fridge
Integrated freezer
Integrated dishwasher
Wine cooler

LIVING ROOM

Bespoke joinery unit in slatted oak frontage with integrated storage. Matt lacquer finish, black grey

FLOORING

Engineered oak flooring to hallway, living areas, kitchen and bedrooms

PRINCIPAL BEDROOM EN-SUITE

Natural stone floor tiles

Natural stone shower enclosure

Frameless glass shower screen

Polished plaster, natural stone and hand-glazed tile wall finishes

Bespoke vanity unit with natural stone top, under-mounted basin(s), oak cabinetry, black metal framework and matt black mixer tap

Black metal-framed mirror with integrated LED illumination

Matt black ceiling-mounted shower

Black heated towel rail

Wall-hung WC with concealed cistern, soft close seat and dual flush plate

SECOND BEDROOM EN-SUITE

Natural stone floor tiles

Natural stone and painted wall finish

Bespoke vanity unit with natural stone top, countertop basin, oak cabinetry and matt black mixer tap

Satin brass finish framed mirror

Frameless glass shower screen

Matt black mixer tap

Matt black shower

Black heated towel rail

Wall-hung WC with concealed cistern, soft close seat and dual flush plate

FAMILY BATHROOM

Natural stone floor and wall tiles

Natural stone shower enclosure

Frameless glass shower screen

Vanity assembly comprising bespoke joinery with profiled oak slats, natural stone sink surround and splashback, under-mounted basin, integrated mirror

Matt black mixer tap

Matt black shower

Black heated towel rail

Wall-hung WC with concealed cistern, soft close seat and dual flush plate

DOORS

Apartment entrance door: Flush face with black grey lacquer finish

Apartment internal doors: Brushed oak timber veneer, vertical grain with white lacquer finish

Glazed black metal bi-folding doors to Winter Garden

Satin brass finish ironmongery

WARDROBES & HALL STORAGE

Bedroom wardrobes: Fitted wardrobes with brushed oak timber veneer, vertical grain with white lacquer finish door fronts, artisan leather-wrapped pull-handles. Carcass interior comprising anthracite melamine, linen finish

Hallways: Doors in brushed oak timber veneer, vertical grain, white lacquer finish with fitted carcassing behind comprising anthracite melamine, linen finish

Satin brass finish ironmongery

Internals to all wardrobes to include tailored modules including shelving, LED lighting, hanging rails and drawers

GENERAL

Lighting and electrical

KNX controlled LED downlights to all rooms

KNX control provides localised scene setting via room switch plate or via mobile app

LED feature lighting to bathroom joinery and wardrobes

Dimmable 5 amp lighting and 13 amp power circuits

Sockets and lighting face plates generally are satin brass finish with black plastic inserts. Kitchen sockets are black metal with black plastic inserts

RJ45 data points at TV locations in living room and bedrooms with immediate access to fast fibre data networks

Heating and cooling

Underfloor heating throughout all apartments

Comfort cooling to habitable rooms

Utility cupboard

Free-standing non-integrated combination washer dryer by Miele

RESIDENTS’ AMENITIES

Full range of amenities including residents’ lounge, cinema room, work hub, fitness suite, private dining room and treatment room

Communal landscaped roof terrace

24-hour concierge

24-hour on-site security with CCTV monitoring

Access control to all building entrances

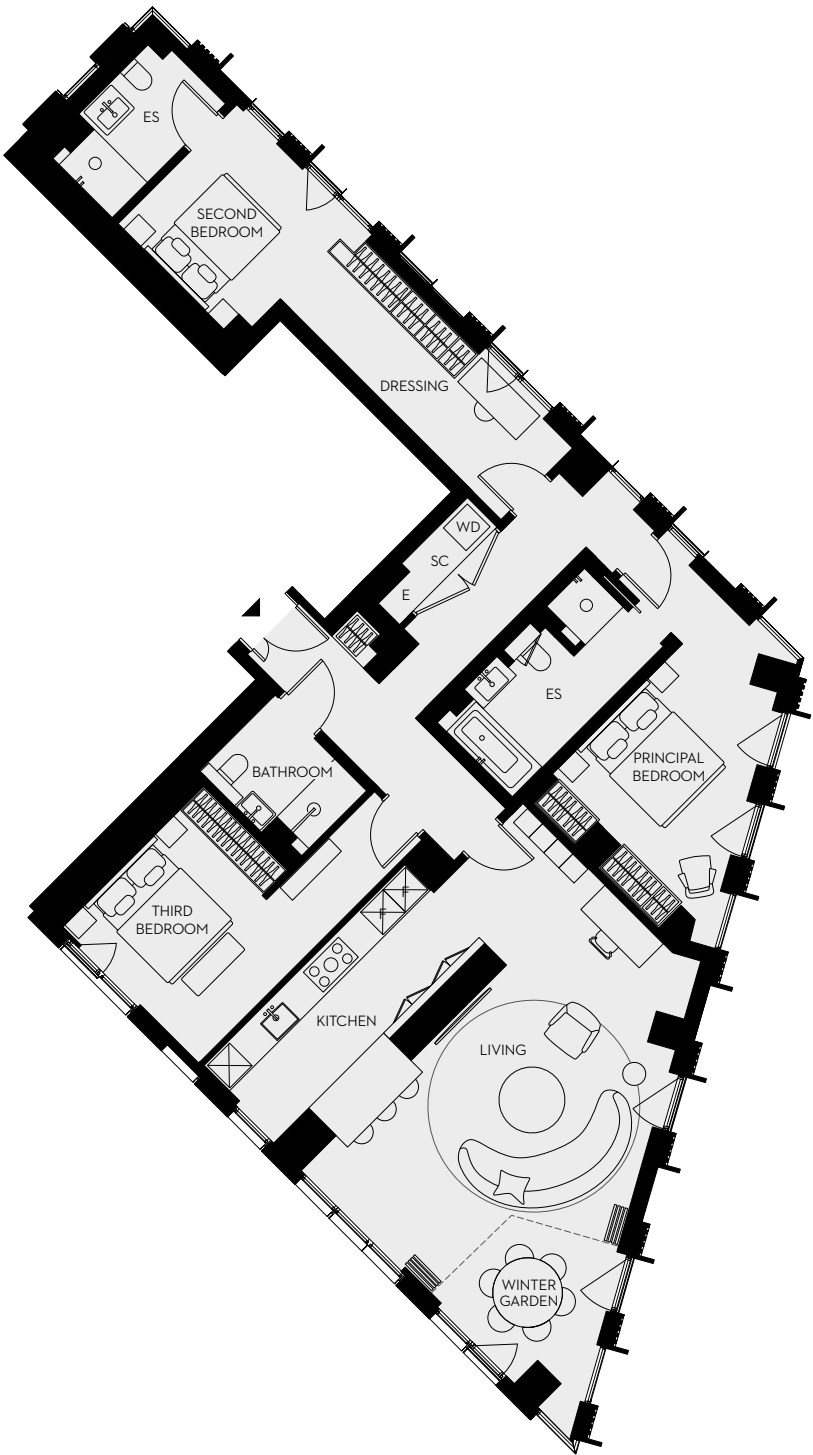
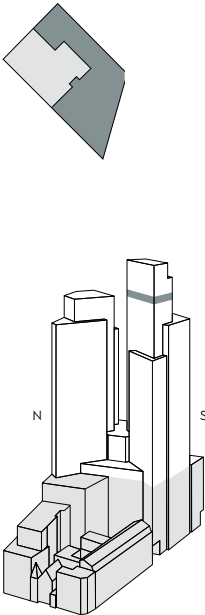
Hotel preferential access and one-year complimentary membership

Three Bedroom Apartment

SOUTH TOWER - FLOOR 30 - APARTMENT 01

S3001

- Total area
149.2 sq m
1606 sq ft
- Living space/Kitchen
43.1 sq m
464 sq ft
- Bedroom 1
16.1 sq m
173 sq ft
- Bedroom 2
19.2 sq m
207 sq ft
- Bedroom 3
14.7 sq m
158 sq ft
- Winter Garden
7.2 sq m
78 sq ft



Scale 1:120

E – Electrical ES – En-suite FF – Fridge/Freezer

SC – Service cupboard WC – Powder room WD – Washer/Dryer

Three Bedroom Apartment

SOUTH TOWER - FLOOR 30 - APARTMENT 01

KITCHEN

Convivium Elegant kitchen by B&B Italia

Tall cabinetry units: Vertical grain timber veneer door (Fossil Oak) with anthracite melamine carcass interior

Base cabinetry units: Matt finish lacquer doors and drawers (Grigio Luce 86LC) with anthracite melamine carcass interior and vertical grain timber veneer door (Fossil Oak) with anthracite melamine carcass interior

Wall cabinetry units: Black anodised aluminium frame, Stopsol glass, vertical grain timber veneer carcass (Fossil Oak)

Splashback: Natural stone, Breccia Capraia, honed finish

Worktop: Quartz by Caesarstone, ‘Snow’, honed finish

Under-mounted enamelled sink by Dornbracht with single lever mixer tap by Dornbracht

Appliances as indicated below by V-ZUG or equivalent:

Combination oven (steam) with purchaser option for microwave combination oven in lieu of steam if required

Downdraft induction hob
Integrated fridge
Integrated freezer
Integrated dishwasher
Wine cooler

LIVING ROOM

Bespoke joinery unit in slatted oak frontage with integrated storage. Matt lacquer finish, black grey

FLOORING

Engineered oak flooring to hallway, living areas, kitchen and bedrooms

PRINCIPAL BEDROOM EN-SUITE

Natural stone floor tiles

Natural stone shower enclosure

Frameless glass shower screen

Polished plaster, natural stone and hand-glazed tile wall finishes

Bespoke vanity unit with natural stone top, under-mounted basin(s), oak cabinetry, black metal framework and matt black mixer tap

Black metal-framed mirror with integrated LED illumination

Matt black ceiling-mounted shower

Black heated towel rail

Wall-hung WC with concealed cistern, soft close seat and dual flush plate

SECOND BEDROOM EN-SUITE

Natural stone floor tiles

Natural stone and painted wall finish

Bespoke vanity unit with natural stone top, countertop basin, oak cabinetry and matt black mixer tap

Satin brass finish framed mirror

Frameless glass shower screen

Matt black mixer tap

Matt black shower

Black heated towel rail

Wall-hung WC with concealed cistern, soft close seat and dual flush plate

FAMILY BATHROOM

Natural stone floor and wall tiles

Natural stone shower enclosure

Frameless glass shower screen

Vanity assembly comprising bespoke joinery with profiled oak slats, natural stone sink surround and splashback, under-mounted basin, integrated mirror

Matt black mixer tap

Matt black shower

Black heated towel rail

Wall-hung WC with concealed cistern, soft close seat and dual flush plate

DOORS

Apartment entrance door: Flush face with black grey lacquer finish

Apartment internal doors: Brushed oak timber veneer, vertical grain with white lacquer finish

Glazed black metal bi-folding doors to Winter Garden

Satin brass finish ironmongery

WARDROBES & HALL STORAGE

Bedroom wardrobes: Fitted wardrobes with brushed oak timber veneer, vertical grain with white lacquer finish door fronts, artisan leather-wrapped pull-handles. Carcass interior comprising anthracite melamine, linen finish

Hallways: Doors in brushed oak timber veneer, vertical grain, white lacquer finish with fitted carcassing behind comprising anthracite melamine, linen finish

Satin brass finish ironmongery

Internals to all wardrobes to include tailored modules including shelving, LED lighting, hanging rails and drawers

GENERAL

Lighting and electrical

KNX controlled LED downlights to all rooms

KNX control provides localised scene setting via room switch plate or via mobile app

LED feature lighting to bathroom joinery and wardrobes

Dimmable 5 amp lighting and 13 amp power circuits

Sockets and lighting face plates generally are satin brass finish with black plastic inserts. Kitchen sockets are black metal with black plastic inserts

RJ45 data points at TV locations in living room and bedrooms with immediate access to fast fibre data networks

Heating and cooling

Underfloor heating throughout all apartments

Comfort cooling to habitable rooms

Utility cupboard

Free-standing non-integrated combination washer dryer by Miele

RESIDENTS’ AMENITIES

Full range of amenities including residents’ lounge, cinema room, work hub, fitness suite, private dining room and treatment room

Communal landscaped roof terrace

24-hour concierge

24-hour on-site security with CCTV monitoring

Access control to all building entrances

Hotel preferential access and one-year complimentary membership

Three Bedroom Apartment

SOUTH TOWER - FLOOR 31 - APARTMENT 01

S3101

Total area
149.2 sq m
1606 sq ft

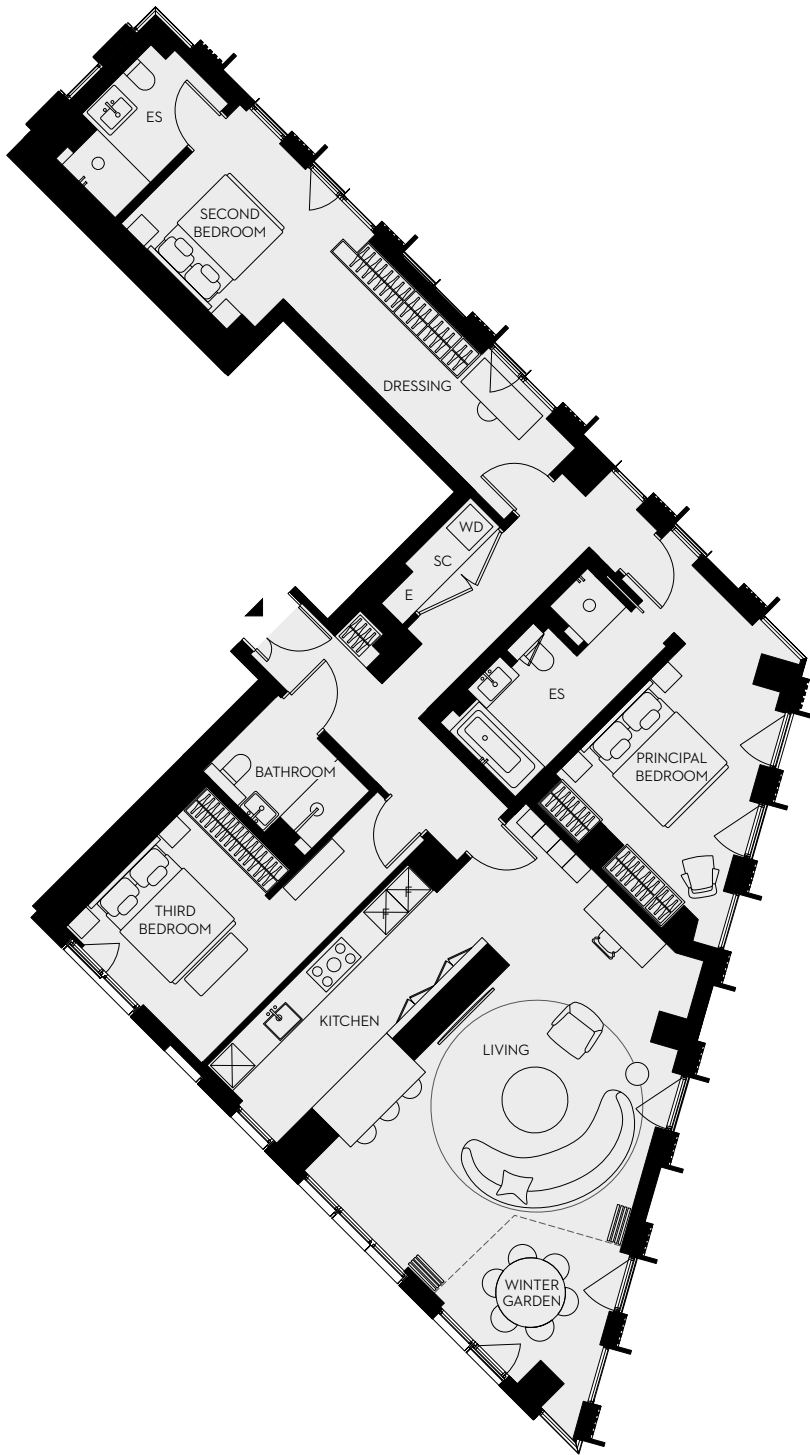
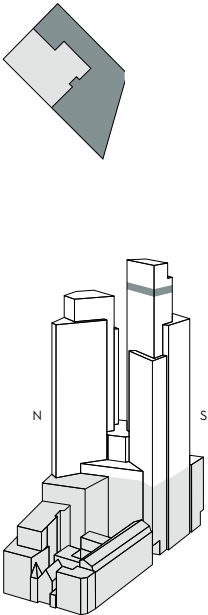
Living space/Kitchen
43.1 sq m
464 sq ft

Bedroom 1
16.1 sq m
173 sq ft

Bedroom 2
19.2 sq m
207 sq ft

Bedroom 3
14.7 sq m
158 sq ft

Winter Garden
7.2 sq m
78 sq ft



Scale 1:120

E – Electrical
SC – Service cupboard
ES – En-suite
WC – Powder room
FF – Fridge/Freezer
WD – Washer/Dryer

Three Bedroom Apartment

SOUTH TOWER - FLOOR 31 - APARTMENT 01

KITCHEN

Convivium Elegant kitchen by B&B Italia

Tall cabinetry units: Vertical grain timber veneer door (Fossil Oak) with anthracite melamine carcass interior

Base cabinetry units: Matt finish lacquer doors and drawers (Grigio Luce 86LC) with anthracite melamine carcass interior and vertical grain timber veneer door (Fossil Oak) with anthracite melamine carcass interior

Wall cabinetry units: Black anodised aluminium frame, Stopsol glass, vertical grain timber veneer carcass (Fossil Oak)

Splashback: Natural stone, Breccia Capraia, honed finish

Worktop: Quartz by Caesarstone, ‘Snow’, honed finish

Under-mounted enamelled sink by Dornbracht with single lever mixer tap by Dornbracht

Appliances as indicated below by V-ZUG or equivalent:

Combination oven (steam) with purchaser option for microwave combination oven in lieu of steam if required

Downdraft induction hob
Integrated fridge
Integrated freezer
Integrated dishwasher
Wine cooler

LIVING ROOM

Bespoke joinery unit in slatted oak frontage with integrated storage. Matt lacquer finish, black grey

FLOORING

Engineered oak flooring to hallway, living areas, kitchen and bedrooms

PRINCIPAL BEDROOM EN-SUITE

Natural stone floor tiles

Natural stone shower enclosure

Frameless glass shower screen

Polished plaster, natural stone and hand-glazed tile wall finishes

Bespoke vanity unit with natural stone top, under-mounted basin(s), oak cabinetry, black metal framework and matt black mixer tap

Black metal-framed mirror with integrated LED illumination

Matt black ceiling-mounted shower

Black heated towel rail

Wall-hung WC with concealed cistern, soft close seat and dual flush plate

SECOND BEDROOM EN-SUITE

Natural stone floor tiles

Natural stone and painted wall finish

Bespoke vanity unit with natural stone top, countertop basin, oak cabinetry and matt black mixer tap

Satin brass finish framed mirror

Frameless glass shower screen

Matt black mixer tap

Matt black shower

Black heated towel rail

Wall-hung WC with concealed cistern, soft close seat and dual flush plate

FAMILY BATHROOM

Natural stone floor and wall tiles

Natural stone shower enclosure

Frameless glass shower screen

Vanity assembly comprising bespoke joinery with profiled oak slats, natural stone sink surround and splashback, under-mounted basin, integrated mirror

Matt black mixer tap

Matt black shower

Black heated towel rail

Wall-hung WC with concealed cistern, soft close seat and dual flush plate

DOORS

Apartment entrance door: Flush face with black grey lacquer finish

Apartment internal doors: Brushed oak timber veneer, vertical grain with white lacquer finish

Glazed black metal bi-folding doors to Winter Garden

Satin brass finish ironmongery

WARDROBES & HALL STORAGE

Bedroom wardrobes: Fitted wardrobes with brushed oak timber veneer, vertical grain with white lacquer finish door fronts, artisan leather-wrapped pull-handles. Carcass interior comprising anthracite melamine, linen finish

Hallways: Doors in brushed oak timber veneer, vertical grain, white lacquer finish with fitted carcassing behind comprising anthracite melamine, linen finish

Satin brass finish ironmongery

Internals to all wardrobes to include tailored modules including shelving, LED lighting, hanging rails and drawers

GENERAL

Lighting and electrical

KNX controlled LED downlights to all rooms

KNX control provides localised scene setting via room switch plate or via mobile app

LED feature lighting to bathroom joinery and wardrobes

Dimmable 5 amp lighting and 13 amp power circuits

Sockets and lighting face plates generally are satin brass finish with black plastic inserts. Kitchen sockets are black metal with black plastic inserts

RJ45 data points at TV locations in living room and bedrooms with immediate access to fast fibre data networks

Heating and cooling

Underfloor heating throughout all apartments

Comfort cooling to habitable rooms

Utility cupboard

Free-standing non-integrated combination washer dryer by Miele

RESIDENTS’ AMENITIES

Full range of amenities including residents’ lounge, cinema room, work hub, fitness suite, private dining room and treatment room

Communal landscaped roof terrace

24-hour concierge

24-hour on-site security with CCTV monitoring

Access control to all building entrances

Hotel preferential access and one-year complimentary membership

Three Bedroom Duplex

N2503

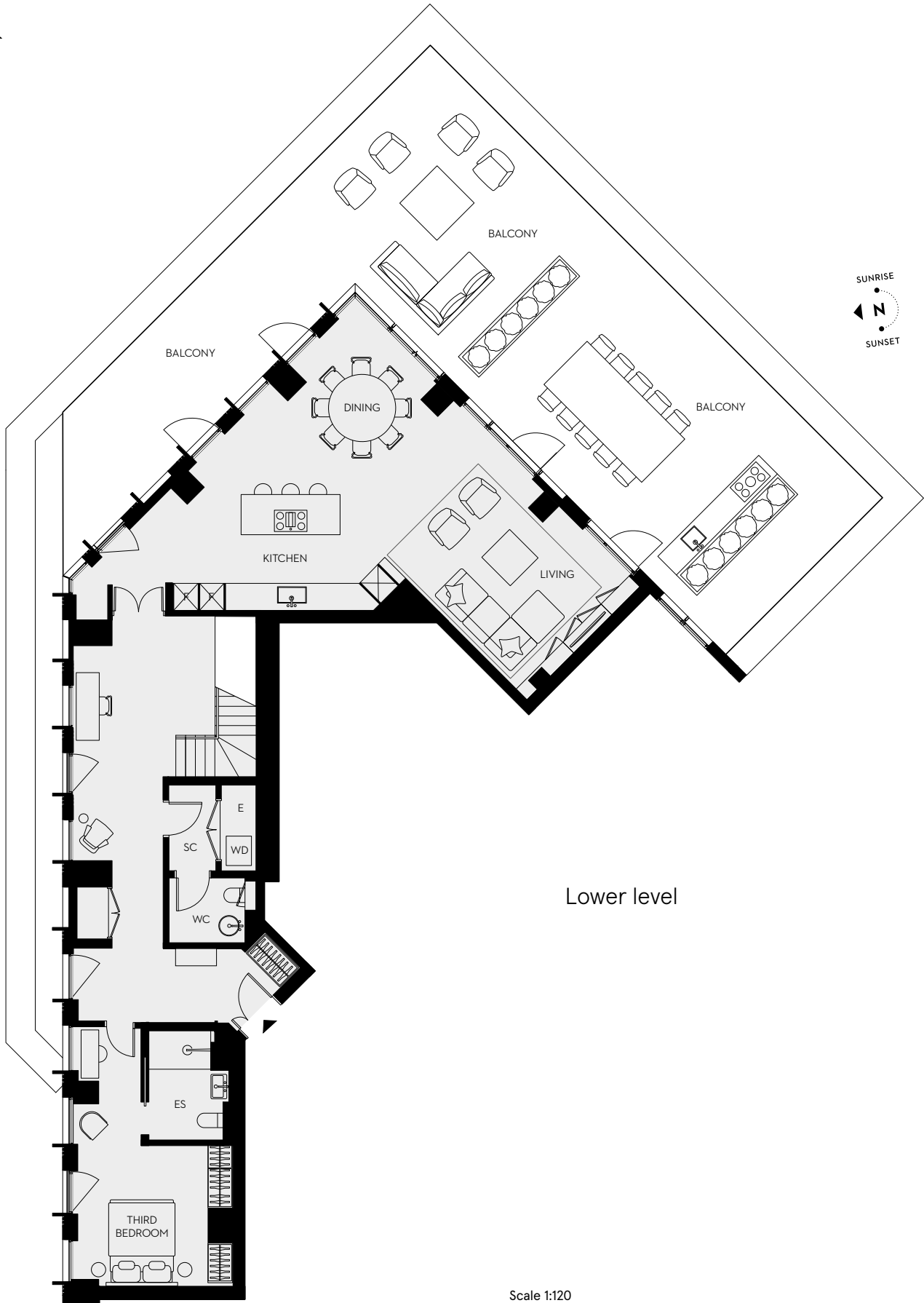
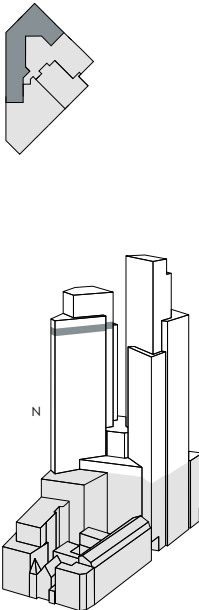
Total area
262.8 sq m
2829 sq ft

Living space/Kitchen
59.2 sq m
637 sq ft

Bedroom 1
23.1 sq m
249 sq ft

Bedroom 2
19.2 sq m
207 sq ft

Bedroom 3
17.1 sq m
184 sq ft

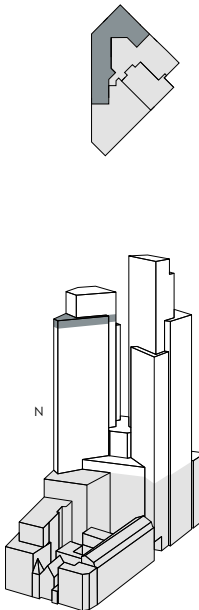
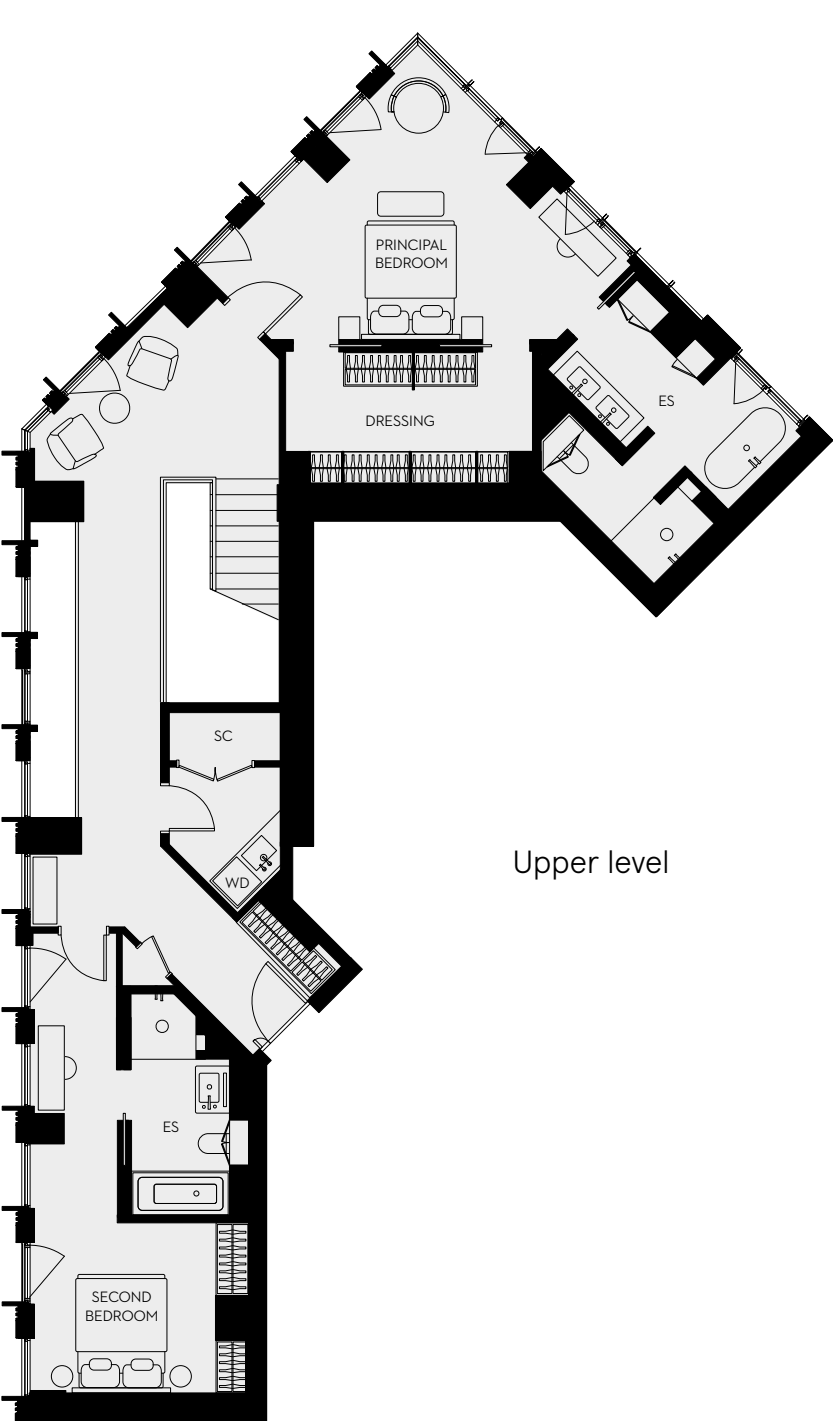


Scale 1:120

E – Electrical ES – En-suite FF – Fridge/Freezer
SC – Service cupboard WC – Powder room WD – Washer/Dryer

Three Bedroom Duplex

NORTH TOWER - FLOOR 25/26 - APARTMENT 03



KITCHEN

Convivium Elegant kitchen by B&B Italia

Tall cabinetry units: Vertical grain timber veneer door (Fossil Oak) with anthracite melamine carcass interior

Base cabinetry units: Matt finish lacquer doors and drawers (Grigio Luce 86LC) with anthracite melamine carcass interior

Wall cabinetry units: Black anodised aluminium frame, Stopsol glass, vertical grain timber veneer carcass (Fossil Oak)

Splashback: Natural stone, Breccia Capraia, honed finish

Worktop: Quartz by Caesarstone, 'Snow', honed finish

Under-mounted enamelled sink by Dornbracht with single lever mixer tap by Dornbracht

Appliances as indicated below by V-ZUG or equivalent:

Combination oven (steam) with purchaser option for microwave combination oven in lieu of steam if required

Downdraft induction hob
Integrated fridge
Integrated freezer
Integrated dishwasher
Wine cooler

LIVING ROOM

Bespoke joinery unit in slatted oak frontage with integrated storage. Matt lacquer finish, black grey

STAIR

Solid oak stair treads with matching solid oak handrail

Bronzed brass effect balustrade

White painted metal stair structure

FLOORING

Engineered oak flooring to hallway, living areas, kitchen, bedrooms and powder room

Inlaid natural stone, honed finish, at apartment entrance

DOORS

Apartment entrance door: Flush face with black grey lacquer finish

Apartment internal doors: Brushed oak timber veneer, vertical grain with white lacquer finish

Satin brass finish ironmongery

POWDER ROOM

Profiled micro-ribbed corian wall panelling

Natural stone free-standing sink

Brass finish mixer tap

Wall-mounted circular mirror

Wall-hung WC with concealed cistern, soft close seat and dual flush plate

PRINCIPAL BEDROOM EN-SUITE

Natural stone floor tiles

Natural stone shower enclosure

Frameless glass shower screen

Polished plaster, natural stone and hand-glazed tile wall finishes

Bespoke vanity unit with natural stone top, under-mounted basin(s), oak cabinetry, black metal framework and matt black mixer tap

Black metal-framed mirror with integrated LED illumination

Matt black ceiling-mounted shower

Black heated towel rail

White floor-standing bath with black taps and hand shower

Wall-hung WC with concealed cistern, soft close seat and dual flush plate

SECOND BEDROOM EN-SUITE

Natural stone floor tiles

Natural stone and painted wall finish

Bespoke vanity unit with natural stone top, countertop basin, oak cabinetry and matt black mixer tap

Satin brass finish framed mirror

Frameless glass shower screen

Matt black mixer tap

Matt black shower

Black heated towel rail

Wall-hung WC with concealed cistern, soft close seat and dual flush plate

THIRD BEDROOM EN-SUITE

Natural stone floor and wall tiles

Natural stone shower enclosure

Frameless glass shower screen

Vanity assembly comprising bespoke joinery with profiled oak slats, natural stone sink surround and splashback, under-mounted basin, integrated mirror

Matt black mixer tap

Matt black shower

Black heated towel rail

Wall-hung WC with concealed cistern, soft close seat and dual flush plate

WARDROBES & HALL STORAGE

Dressing room wardrobes: Open fronted fitted wardrobes with brushed oak timber veneer carcasses, vertical grain with white lacquer finish and integrated hinged mirror doors

Bedroom wardrobes: Fitted wardrobes with brushed oak timber veneer, vertical grain with white lacquer finish door fronts, artisan leather-wrapped pull-handles. Carcass interior comprising anthracite melamine, linen finish

Hallways: Doors in brushed oak timber veneer, vertical grain, white lacquer finish with fitted carcassing behind comprising anthracite melamine, linen finish.

Satin brass finish ironmongery

Internals to all wardrobes to include tailored modules including shelving, LED lighting, hanging rails and drawers

GENERAL

Lighting and electrical

KNX controlled LED downlights to all rooms

KNX control provides localised scene setting via room switch plate or via mobile app

LED feature lighting to bathroom joinery and wardrobes

Dimmable 5 amp lighting and 13 amp power circuits

Sockets and lighting face plates generally are satin brass finish with black plastic inserts. Kitchen sockets are black metal with black plastic inserts

RJ45 data points at TV locations in living room and bedrooms with immediate access to fast fibre data networks

Heating and cooling

Underfloor heating throughout all apartments

Comfort cooling to habitable rooms

Utility room x 2

Free-standing non-integrated combination washer dryer by Miele

TERRACE

Glazed balustrade

Granite paving, flamed finish

RESIDENTS' AMENITIES

Full range of amenities including residents' lounge, cinema room, work hub, fitness suite, private dining room and treatment room

Communal landscaped roof terrace

24-hour concierge

24-hour on-site security with CCTV monitoring

Access control to all building entrances

Hotel preferential access and one-year complimentary membership

Three Bedroom Duplex

S2701

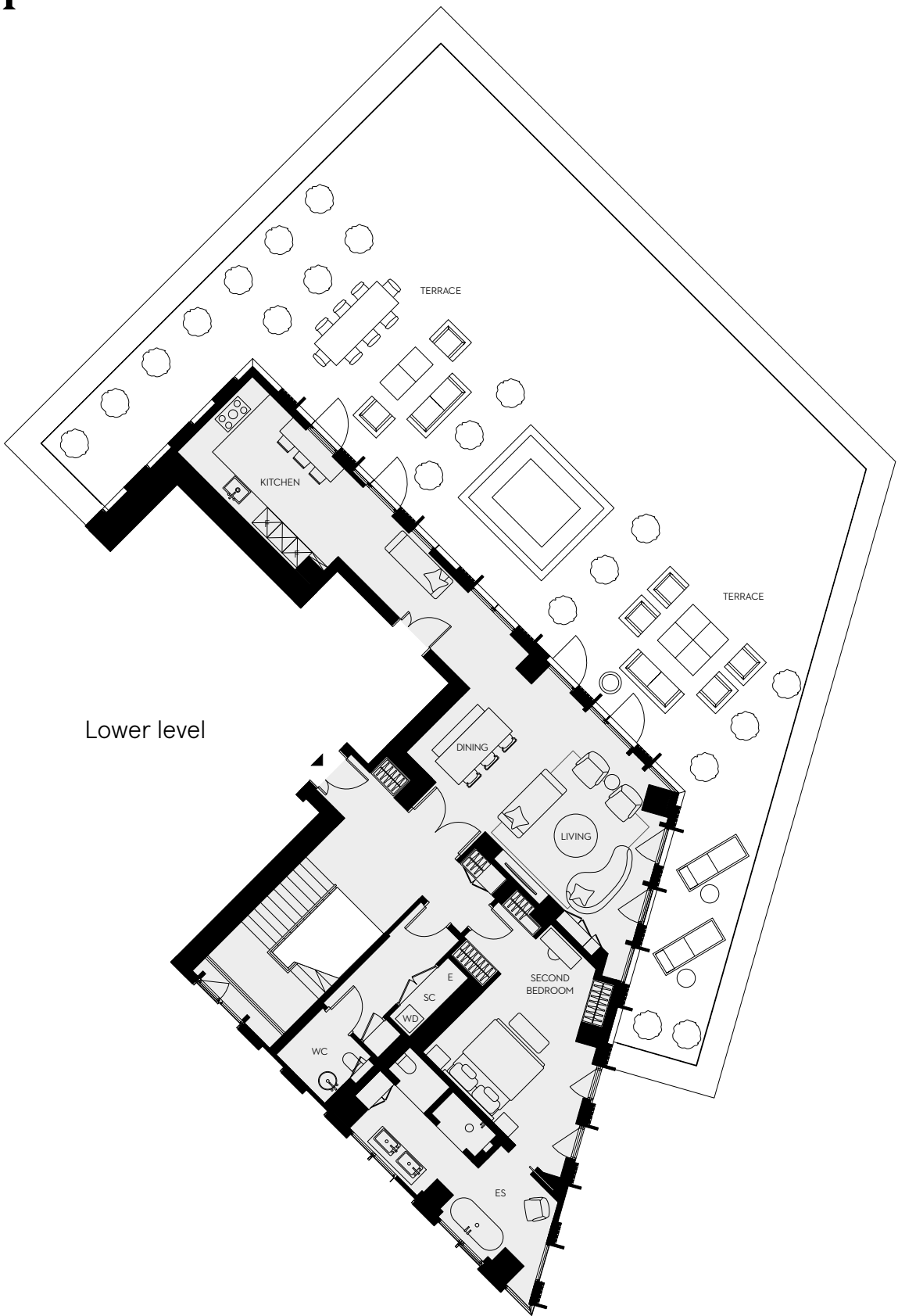
Total area
276.9 sq m
2980 sq ft

Living space/Kitchen
30.9 sq m
333 sq ft

Bedroom 1
44.8 sq m
482 sq ft

Bedroom 2
20.7 sq m
223 sq ft

Bedroom 3
20 sq m
215 sq ft



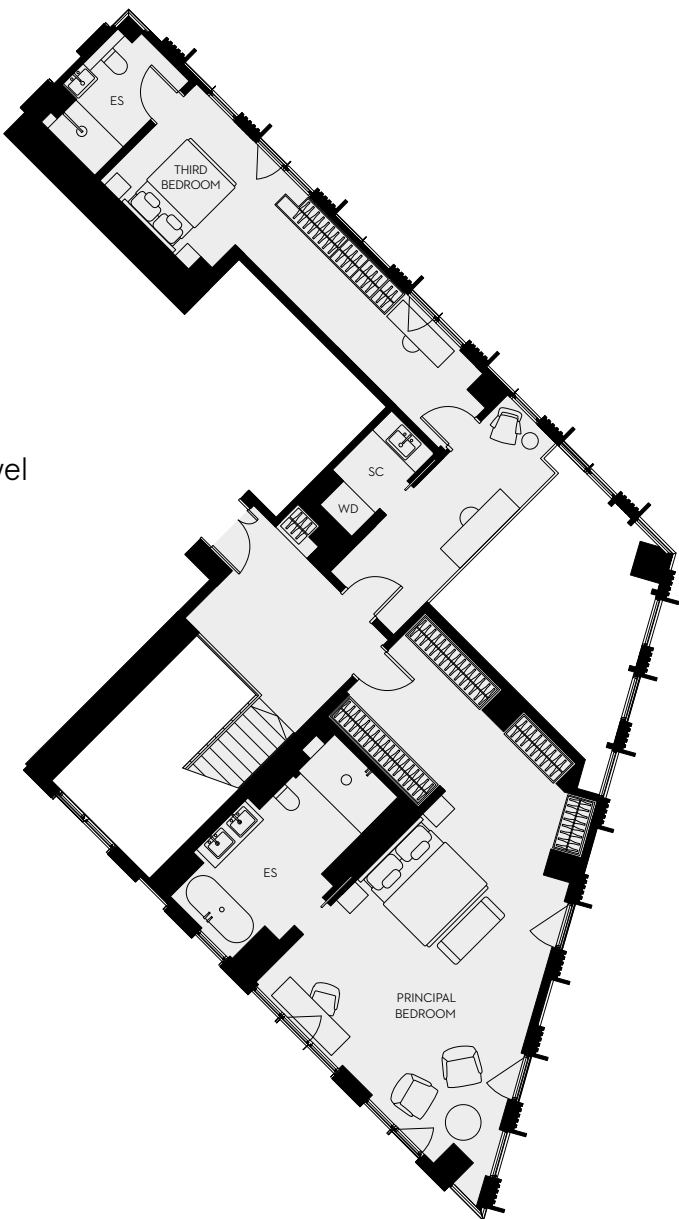
Scale 1:120

E – Electrical ES – En-suite FF – Fridge/Freezer
SC – Service cupboard WC – Powder room WD – Washer/Dryer

Three Bedroom Duplex

SOUTH TOWER - FLOOR 27/28 - APARTMENT 01

Upper level



KITCHEN

Convivium Elegant kitchen by B&B Italia

Tall cabinetry units: Vertical grain timber veneer door (Fossil Oak) with anthracite melamine carcass interior

Base cabinetry units: Matt finish lacquer doors and drawers (Grigio Luce 86LC) with anthracite melamine carcass interior

Wall cabinetry units: Black anodised aluminium frame, Stopsol glass, vertical grain timber veneer carcass (Fossil Oak)

Splashback: Natural stone, Breccia Capraia, honed finish

Worktop: Quartz by Caesarstone, 'Snow', honed finish

Under-mounted enamelled sink by Dornbracht with single lever mixer tap by Dornbracht

Appliances as indicated below by V-ZUG or equivalent:

Combination oven (steam) with purchaser option for microwave combination oven in lieu of steam if required

Downdraft induction hob
Integrated fridge
Integrated freezer
Integrated dishwasher
Wine cooler

Mobile bar-island accessory

LIVING ROOM

Bespoke joinery unit in slatted oak frontage with integrated storage. Matt lacquer finish, black grey

STAIR

Solid oak stair treads with matching solid oak handrail

Bronzed brass effect balustrade

White painted metal stair structure

FLOORING

Engineered oak flooring to hallway, living areas, kitchen, bedrooms and powder room

Inlaid natural stone, honed finish, at apartment entrance

DOORS

Apartment entrance door: Flush face with black grey lacquer finish

Apartment internal doors: Brushed oak timber veneer, vertical grain with white lacquer finish

Satin brass finish ironmongery

POWDER ROOM

Profiled micro-ribbed corian wall panelling

Natural stone free-standing sink

Brass finish mixer tap

Wall-mounted circular mirror

Wall-hung WC with concealed cistern, soft close seat and dual flush plate

PRINCIPAL BEDROOM EN-SUITE

Natural stone floor tiles

Natural stone shower enclosure

Frameless glass shower screen

Polished plaster, natural stone and hand-glazed tile wall finishes

Bespoke vanity unit with natural stone top, under-mounted basin(s), oak cabinetry, black metal framework and matt black mixer tap

Black metal-framed mirror with integrated LED illumination

Matt black ceiling-mounted shower

Black heated towel rail

White floor-standing bath with black taps and hand shower

Wall-hung WC with concealed cistern, soft close seat and dual flush plate

SECOND BEDROOM EN-SUITE

Natural stone floor tiles

Natural stone and painted wall finish

Bespoke vanity unit with natural stone top, countertop basin, oak cabinetry and matt black mixer tap

Satin brass finish framed mirror

Frameless glass shower screen

Matt black mixer tap

Matt black shower

Black heated towel rail

Wall-hung WC with concealed cistern, soft close seat and dual flush plate

THIRD BEDROOM EN-SUITE

Natural stone floor and wall tiles

Natural stone shower enclosure

Frameless glass shower screen

Vanity assembly comprising bespoke joinery with profiled oak slats, natural stone sink surround and splashback, under-mounted basin, integrated mirror

Matt black mixer tap

Matt black shower

Black heated towel rail

Wall-hung WC with concealed cistern, soft close seat and dual flush plate

WARDROBES & HALL STORAGE

Bedroom wardrobes: Fitted wardrobes with brushed oak timber veneer, vertical grain with white lacquer finish door fronts, artisan leather-wrapped pull-handles. Carcass interior comprising anthracite melamine, linen finish

Hallways: Doors in brushed oak timber veneer, vertical grain, white lacquer finish with fitted carcassing behind comprising anthracite melamine, linen finish

Satin brass finish ironmongery

Internals to all wardrobes to include tailored modules including shelving, LED lighting, hanging rails and drawers

GENERAL

Lighting and electrical

KNX controlled LED downlights to all rooms

KNX control provides localised scene setting via room switch plate or via mobile app

LED feature lighting to bathroom joinery and wardrobes

Dimmable 5 amp lighting and 13 amp power circuits

Sockets and lighting face plates generally are satin brass finish with black plastic inserts. Kitchen sockets are black metal with black plastic inserts

RJ45 data points at TV locations in living room and bedrooms with immediate access to fast fibre data networks

Heating and cooling

Underfloor heating throughout all apartments

Comfort cooling to habitable rooms

Utility cupboard

Free-standing non-integrated combination washer dryer by Miele

TERRACE

Glazed balustrade

Granite paving, flamed finish

RESIDENTS' AMENITIES

Full range of amenities including residents' lounge, cinema room, work hub, fitness suite, private dining room and treatment room

Communal landscaped roof terrace

24-hour concierge

24-hour on-site security with CCTV monitoring

Access control to all building entrances

Hotel preferential access and one-year complimentary membership

Three Bedroom Duplex

N2801

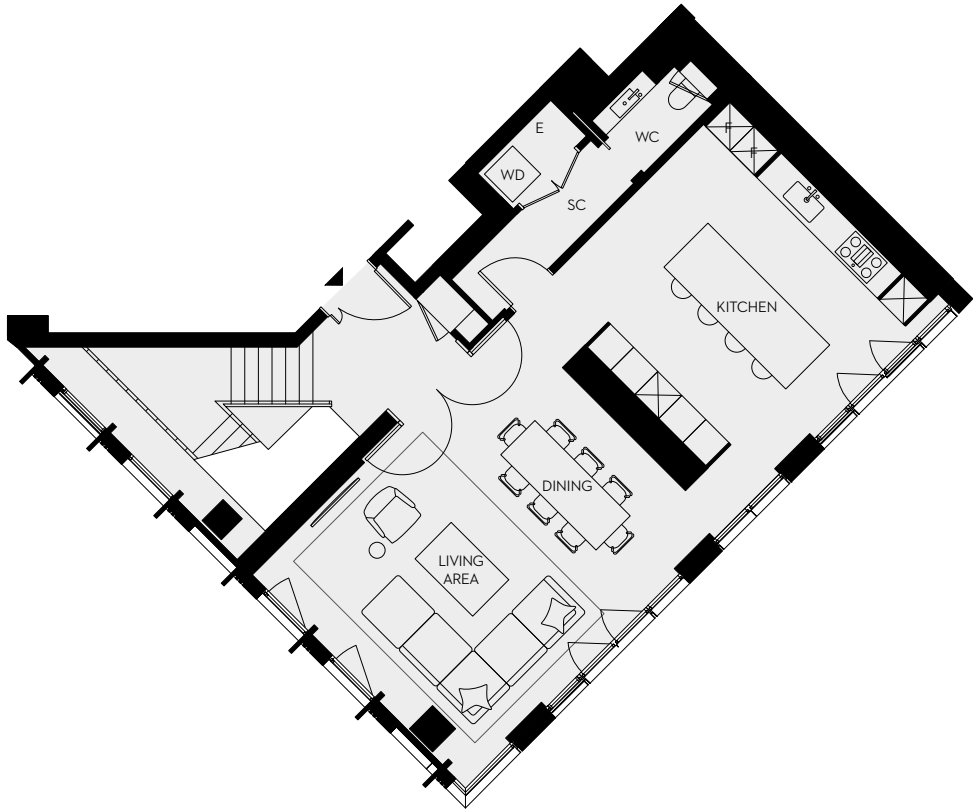
Total area
230.1 sq m
2477 sq ft

Living space/Kitchen
62 sq m
667 sq ft

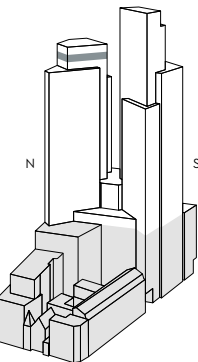
Bedroom 1
32.6 sq m
351 sq ft

Bedroom 2
12.6 sq m
136 sq ft

Bedroom 3
9.7 sq m
104 sq ft



Lower level

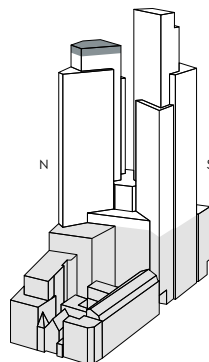
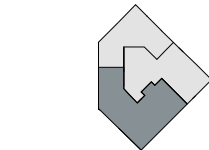


Scale 1:120

E – Electrical ES – En-suite FF – Fridge/Freezer
SC – Service cupboard WC – Powder room WD – Washer/Dryer



Upper level



Three Bedroom Duplex

NORTH TOWER - FLOOR 28/29 - APARTMENT 01

KITCHEN

Convivium Elegant kitchen by B&B Italia

Tall cabinetry units: Vertical grain timber veneer door (Fossil Oak) with anthracite melamine carcass interior

Base cabinetry units: Matt finish lacquer doors and drawers (Grigio Luce 86LC) with anthracite melamine carcass interior

Wall cabinetry units: Black anodised aluminium frame, Stopsol glass, vertical grain timber veneer carcass (Fossil Oak)

Splashback: Natural stone, Breccia Capraia, honed finish

Worktop: Quartz by Caesarstone, 'Snow', honed finish

Under-mounted enamelled sink by Dornbracht with single lever mixer tap by Dornbracht

Appliances as indicated below by V-ZUG or equivalent:

Combination oven (steam) with purchaser option for microwave combination oven in lieu of steam if required

Downdraft induction hob
Integrated fridge
Integrated freezer
Integrated dishwasher
Wine cooler

LIVING ROOM

Bespoke joinery unit in slatted oak frontage with integrated storage. Matt lacquer finish, black grey

STAIR

Solid oak stair treads with matching solid oak handrail

Bronzed brass effect balustrade

White painted metal stair structure

FLOORING

Engineered oak flooring to hallway, living areas, kitchen, bedrooms and powder room

Inlaid natural stone, honed finish, at apartment entrance

DOORS

Apartment entrance door: Flush face with black grey lacquer finish

Apartment internal doors: Brushed oak timber veneer, vertical grain with white lacquer finish

Glazed black metal bi-parting doors to principal bedroom internal balcony condition over living room.

Satin brass finish ironmongery

POWDER ROOM

Profiled micro-ribbed corian wall panelling

Bespoke vanity unit with natural stone top, undermount sink, oak cabinetry

Brass finish mixer tap

Wall-mounted circular mirror

Wall-hung WC with concealed cistern, soft close seat and dual flush plate

PRINCIPAL BEDROOM EN-SUITE (INCLUDING STEAM ROOM)

Natural stone floor tiles

Natural stone shower enclosure

Frameless glass shower screen

Polished plaster, natural stone and hand-glazed tile wall finishes

Bespoke vanity unit with natural stone top, under-mounted basin(s), oak cabinetry, black metal framework and matt black mixer tap

Black metal-framed mirror with integrated LED illumination

Matt black ceiling mounted shower

Black heated towel rail

White floor-standing bath with black taps and hand shower

Wall-hung WC with concealed cistern, soft close seat and dual flush plate

Black heated towel rail

White floor-standing bath with black taps and hand shower

Wall-hung WC with concealed cistern, soft close seat and dual flush plate

Black heated towel rail

White floor-standing bath with black taps and hand shower

Wall-hung WC with concealed cistern, soft close seat and dual flush plate

White floor-standing bath with black taps and hand shower

Wall-hung WC with concealed cistern, soft close seat and dual flush plate

Black heated towel rail

White floor-standing bath with black taps and hand shower

Wall-hung WC with concealed cistern, soft close seat and dual flush plate

Black heated towel rail

White floor-standing bath with black taps and hand shower

Wall-hung WC with concealed cistern, soft close seat and dual flush plate

Black heated towel rail

White floor-standing bath with black taps and hand shower

Wall-hung WC with concealed cistern, soft close seat and dual flush plate

Black heated towel rail

White floor-standing bath with black taps and hand shower

Wall-hung WC with concealed cistern, soft close seat and dual flush plate

Black heated towel rail

White floor-standing bath with black taps and hand shower

Wall-hung WC with concealed cistern, soft close seat and dual flush plate

Black heated towel rail

White floor-standing bath with black taps and hand shower

Wall-hung WC with concealed cistern, soft close seat and dual flush plate

WARDROBES & HALL STORAGE

Dressing room wardrobes: Open fronted fitted wardrobes with brushed oak timber veneer carcasses, vertical grain with white lacquer finish and integrated hinged mirror doors

Bedroom wardrobes: Fitted wardrobes with brushed oak timber veneer, vertical grain with white lacquer finish door fronts, artisan leather-wrapped pull-handles. Carcass interior comprising anthracite melamine, linen finish

Hallways: Doors in brushed oak timber veneer, vertical grain, white lacquer finish with fitted carcassing behind comprising anthracite melamine, linen finish

Satin brass finish ironmongery

Internals to all wardrobes to include tailored modules including shelving, LED lighting, hanging rails and drawers

GENERAL

Lighting and electrical

KNX controlled LED downlights to all rooms.

KNX control provides localised scene setting via room switch plate or via mobile app

LED feature lighting to bathroom joinery and wardrobes

Dimmable 5 amp lighting and 13 amp power circuits

Sockets and lighting face plates generally are satin brass finish with black plastic inserts. Kitchen sockets are black metal with black plastic inserts

RJ45 data points at TV locations in living room and bedrooms with immediate access to fast fibre data networks

Heating and cooling

Underfloor heating throughout all apartments

Comfort cooling to habitable rooms

Utility cupboard x2

Free-standing non-integrated combination washer dryer by Miele

TERRACE

Glazed balustrade

Granite paving, flamed finish

RESIDENTS' AMENITIES

Full range of amenities including residents' lounge, cinema room, work hub, fitness suite, private dining room and treatment room

Communal landscaped roof terrace

24-hour concierge

24-hour on-site security with CCTV monitoring

Access control to all building entrances

Hotel preferential access and one-year complimentary membership

Three Bedroom Duplex

S3301

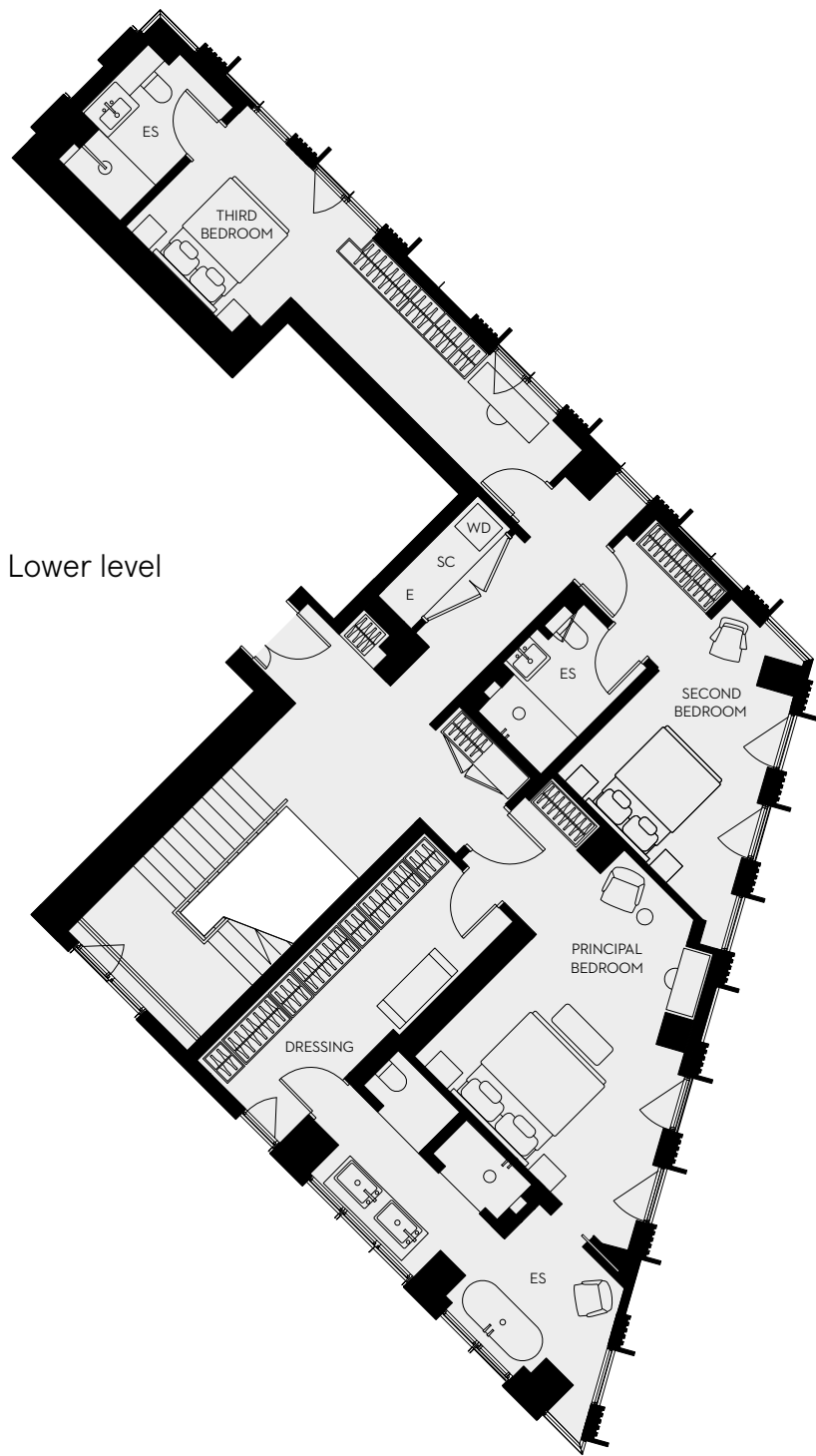
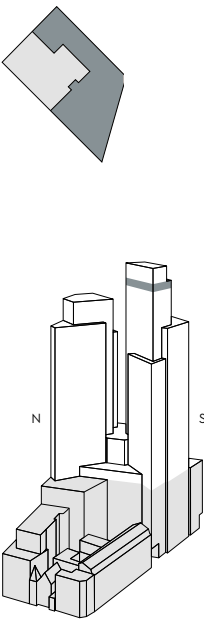
Total area
246.7 sq m
2655 sq ft

Living space/Kitchen
69.4 sq m
747 sq ft

Bedroom 1
35.9 sq m
386 sq ft

Bedroom 2
16.6 sq m
179 sq ft

Bedroom 3
19.1 sq m
206 sq ft



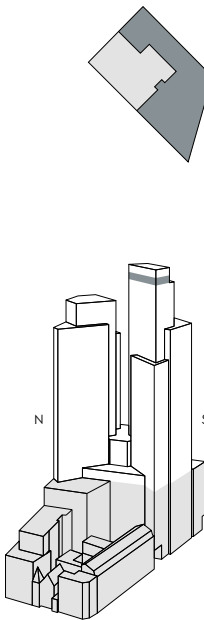
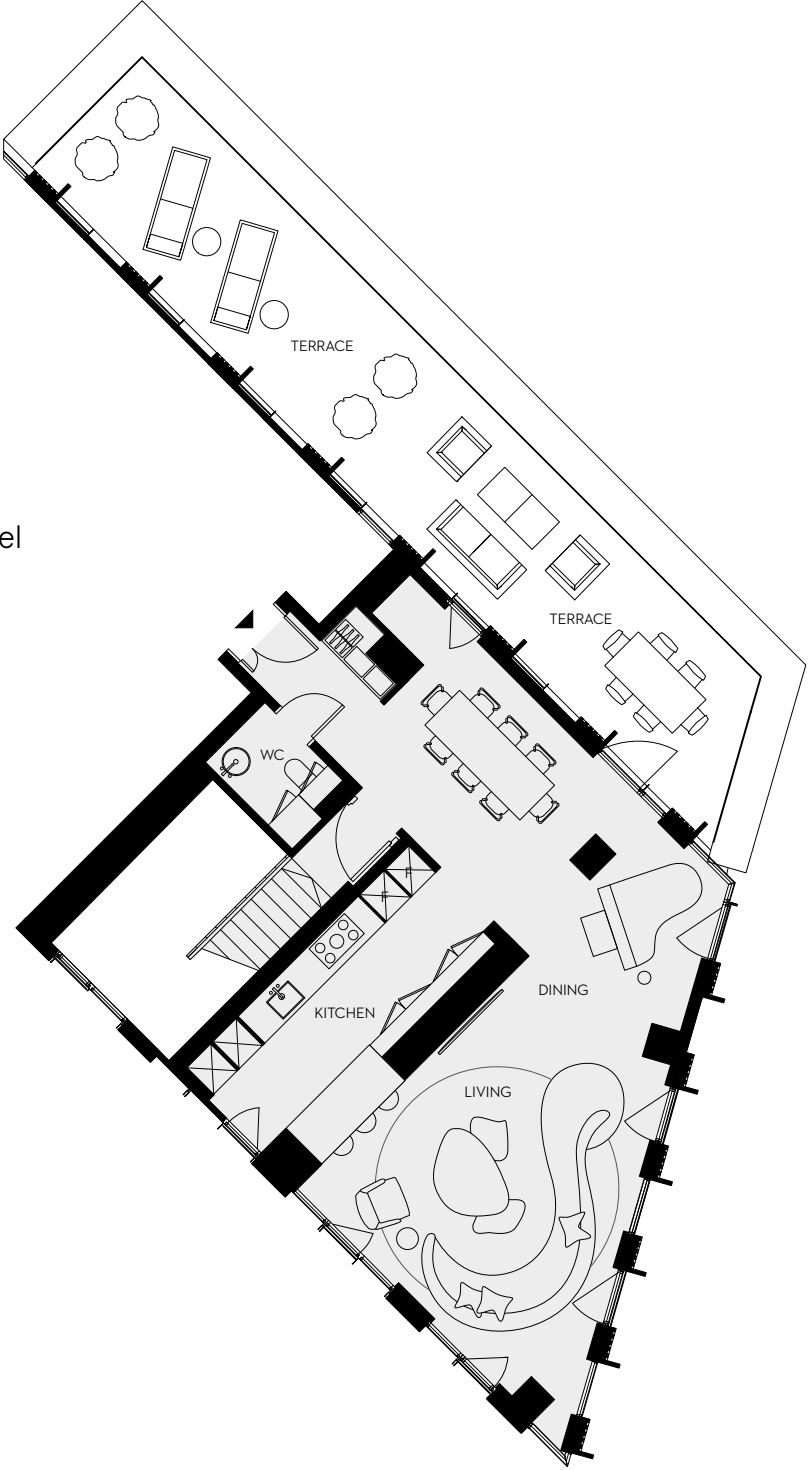
Lower level

Scale 1:120

E – Electrical ES – En-suite FF – Fridge/Freezer
SC – Service cupboard WC – Powder room WD – Washer/Dryer



Upper level



Three Bedroom Duplex

SOUTH TOWER - FLOOR 32/33 - APARTMENT 01

KITCHEN

Convivium Elegant kitchen by B&B Italia

Tall cabinetry units: Vertical grain timber veneer door (Fossil Oak) with anthracite melamine carcass interior

Base cabinetry units: Matt finish lacquer doors and drawers (Grigio Luce 86LC) with anthracite melamine carcass interior

Wall cabinetry units: Black anodised aluminium frame, Stopsol glass, vertical grain timber veneer carcass (Fossil Oak)

Splashback: Natural stone, Breccia Capraia, honed finish

Worktop: Quartz by Caesarstone, 'Snow', honed finish

Under-mounted enamelled sink by Dornbracht with single lever mixer tap by Dornbracht

Appliances as indicated below by V-ZUG or equivalent:

Combination oven (steam) with purchaser option for microwave combination oven in lieu of steam if required

Downdraft induction hob
Integrated fridge
Integrated freezer
Integrated dishwasher
Wine cooler

LIVING ROOM

Bespoke joinery unit in slatted oak frontage with integrated storage. Matt lacquer finish, black grey

STAIR

Solid oak stair treads with matching solid oak handrail

Bronzed brass effect balustrade

White painted metal stair structure

FLOORING

High quality engineered oak flooring to hallway, living areas, kitchen, bedrooms and powder room

Inlaid natural stone, honed finish, at apartment entrance

DOORS

Apartment entrance door: Flush face with black grey lacquer finish

Apartment internal doors: Brushed oak timber veneer, vertical grain with white lacquer finish

Satin brass finish ironmongery

POWDER ROOM

Profiled micro-ribbed corian wall panelling

Natural stone free-standing sink

Brass finish mixer tap

Wall-mounted circular mirror

Wall-hung WC with concealed cistern, soft close seat and dual flush plate

PRINCIPAL BEDROOM EN-SUITE

Natural stone floor tiles

Natural stone and painted wall finish

Bespoke vanity unit with natural stone top, countertop basin, oak cabinetry and matt black mixer tap

Satin brass finish framed mirror

Frameless glass shower screen

Matt black mixer tap

Matt black ceiling-mounted shower

Black heated towel rail

White floor-standing bath with black taps and hand shower

Wall-hung WC with concealed cistern, soft close seat and dual flush plate

SECOND BEDROOM EN-SUITE

Natural stone floor tiles

Natural stone shower enclosure

Frameless glass shower screen

Polished plaster, natural stone and hand-glazed tile wall finishes

Bespoke vanity unit with natural stone top, under-mounted basin(s), oak cabinetry, black metal framework and matt black mixer tap

Black metal-framed mirror with integrated LED illumination

Matt black shower

Black heated towel rail

Wall-hung WC with concealed cistern, soft close seat and dual flush plate

THIRD BEDROOM EN-SUITE

Natural stone floor and wall tiles

Natural stone shower enclosure

Frameless glass shower screen

Vanity assembly comprising bespoke joinery with profiled oak slats, natural stone sink surround and splashback, under-mounted basin, integrated mirror

Matt black mixer tap

Matt black shower

Black heated towel rail

Wall-hung WC with concealed cistern, soft close seat and dual flush plate

WARDROBES & HALL STORAGE

Bedroom wardrobes: Fitted wardrobes with brushed oak timber veneer, vertical grain with white lacquer finish door fronts, artisan leather-wrapped pull-handles. Carcass interior comprising anthracite melamine, linen finish

Hallways: Doors in brushed oak timber veneer, vertical grain, white lacquer finish with fitted carcassing behind comprising anthracite melamine, linen finish

Satin brass finish ironmongery

Internals to all wardrobes to include tailored modules including shelving, LED lighting, hanging rails and drawers

GENERAL

Lighting and electrical

KNX controlled LED downlights to all rooms

KNX control provides localised scene setting via room switch plate or via mobile app

LED feature lighting to bathroom joinery and wardrobes

Dimmable 5 amp lighting and 13 amp power circuits

Sockets and lighting face plates generally are satin brass finish with black plastic inserts. Kitchen sockets are black metal with black plastic inserts.

RJ45 data points at TV locations in living room and bedrooms with immediate access to fast fibre data networks

Heating and cooling

Underfloor heating throughout all apartments

Comfort cooling to habitable rooms

Utility cupboard

Free-standing non-integrated combination washer dryer by Miele

TERRACE

Glazed balustrade

Granite paving, flamed finish

RESIDENTS' AMENITIES

Full range of amenities including residents' lounge, cinema room, work hub, fitness suite, private dining room and treatment room

Communal landscaped roof terrace

24-hour concierge

24-hour on-site security with CCTV monitoring

Access control to all building entrances

Hotel preferential access and one-year complimentary membership

Refinement that
speaks for itself



Terrace (Apt N2701)

Amenities

The seventh floor is an extension of your home. The central living room includes furniture carefully chosen to promote sharing and a sense of community. The residents' gym has state-of-the-art equipment, while the cinema room takes cues from the golden age of film.





Entrance lobby and concierge



Entrance lobby lounge



RESIDENTS' LOUNGE

RESIDENTS' LOUNGE

Residents' lounge



Quiet work hub

RESIDENTS' LOUNGE



Private dining room

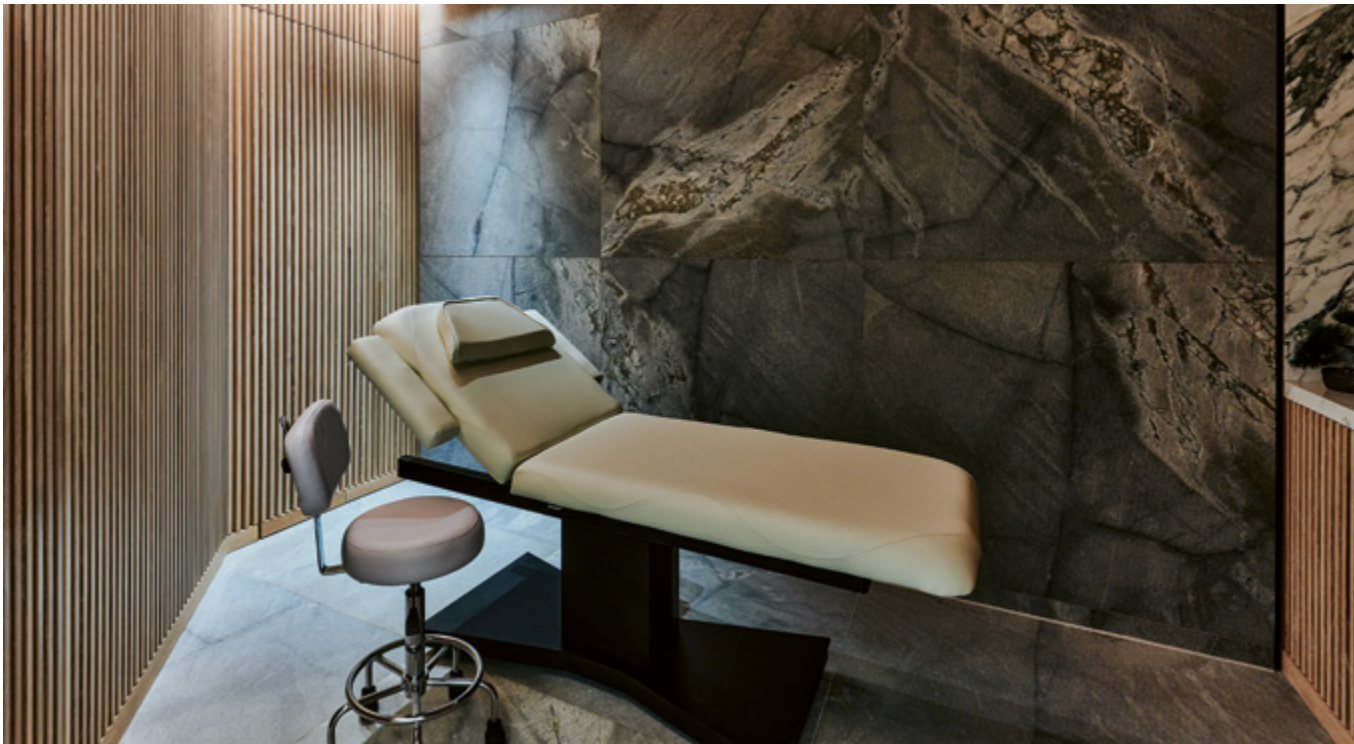
RESIDENTS' LOUNGE



Residents' gym



Cinema room



Treatment room



Sun Street Hotel bar and lounge



Sun Street Hotel restaurant

Confidence that
speaks for itself

City life that speaks for itself

With the tech hub of Old Street to the north and the creative melting pot of Shoreditch to the east, One Crown Place reaches out to the most dynamic parts of central London, within sight of the City's iconic boundaries.

One Crown Place pulses in its refreshingly unique location. The prestige and tradition of London's most historic district rubs shoulders with the unlimited innovation and colourful culture beaming out of its neighbourhoods.

Shopping

Eating

Work and play

Nightlife

Arts and culture

Wellbeing

LOCATION



The Royal Exchange



Mr Start Tailor, Shoreditch



Boodles, The Royal Exchange

LOCATION



Aesop, Shoreditch



The Princess of Shoreditch



The Clove Club

LOCATION



Eataly

LOCATION



Bibo, The Mondrian



Bibo, The Mondrian



The Ned



Broadgate Circle



Laurel's on the Roof, The Mondrian



The Princess of Shoreditch



Galvin La Chapelle

LOCATION

LOCATION



The Barbican



London Symphony Orchestra, The Barbican



Old Spitalfields Market

LOCATION

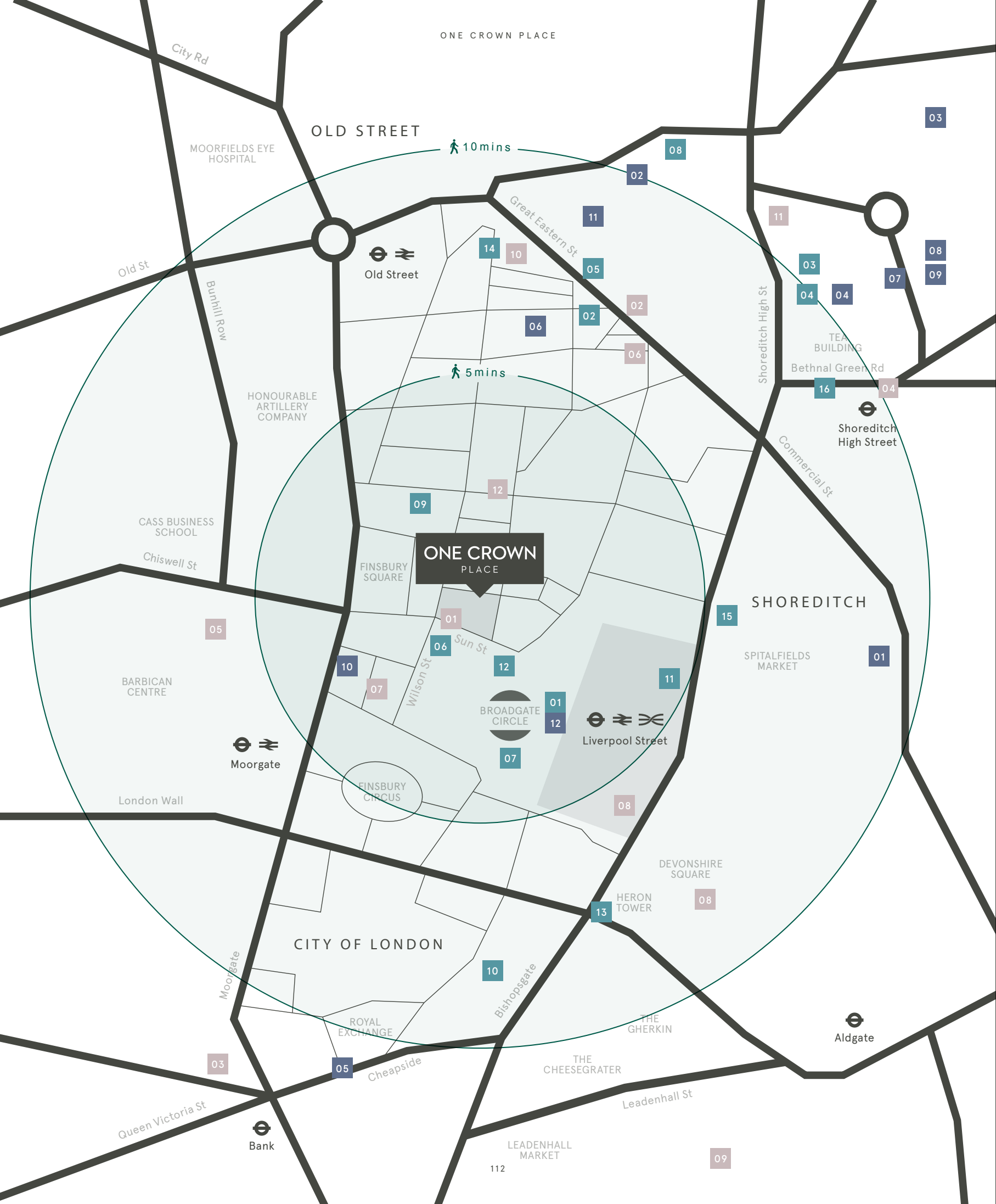


Finsbury Square Bowls Club

LOCATION



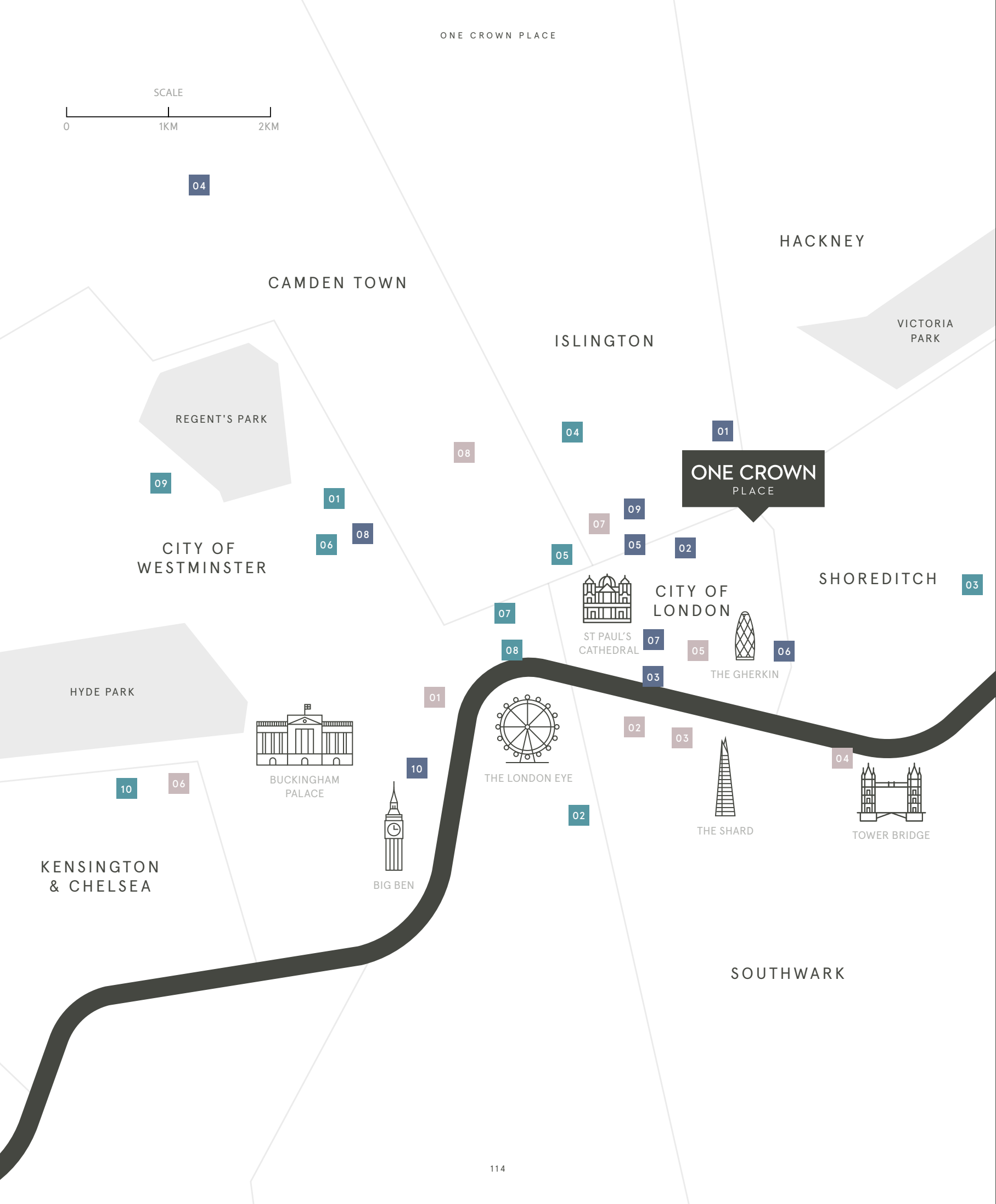
Gloria, Shoreditch



A location that speaks for itself

■ BARS & RESTAURANTS	■ RETAIL	■ HOTELS & MEMBERS' CLUBS
01 BROADGATE CIRCLE: MRS FOGG'S SHORYU RAMEN THE BOTANIST YAUATCHA CITY	01 SPITALFIELDS: CHANEL COS & OTHER STORIES LULULEMON OLLIE QUINN RAPHA	01 SUN STREET HOTEL 02 HART HOTEL 03 THE NED 04 SHOREDITCH HOUSE 05 THE MONTCALM 06 MONDRIAN / THE CURTAIN CLUB 07 SOUTH PLACE HOTEL 08 ANDAZ AT LIVERPOOL STREET 09 FOUR SEASONS SPA 10 NOBU HOTEL 11 100 SHOREDITCH 12 THE EIGHT CLUB
02 LEROY	02 GOODHOOD	
03 BRAT	03 MONOLOGUE	
04 SMOKING GOAT	04 APC	
05 GLORIA	05 ROYAL EXCHANGE: BOODLES HERMÈS LOUIS VUITTON TOM DAVIES	
06 BAR DOURO (CITY)	06 HOUSE OF HACKNEY	
07 LIVERPOOL ST GRIND	07 AESOP	
08 CLOVE CLUB	08 LABOUR & WAIT	
09 AVIARY	09 TRACEY NEULS	
10 CITY SOCIAL	10 MARKS & SPENCER	
11 EATALY	11 MR START	
12 GAUCHO	12 BROADGATE CIRCLE: DUNE GANT KIEHL'S L'OCCITANE NEOM OMEGA REISS SPACE NK TOMMY HILFIGER TIMOTHY OULTON WATCHES OF SWITZERLAND	
13 SUSHI SAMBA		
14 THE PRINCESS OF SHOREDITCH		
15 GALVIN LA CHAPELLE		
16 LYLE'S		

Travel times are taken from citymapper.com, crossrail.co.uk and Google Maps. Tube and train times are from Liverpool Street Station.



19 Sun Street,
London EC2A 2FJ

+44(0)20 7205 2697
onecrownplace@cbre.com
onecrownplace.com

Marketing by

Designed by

CONDUCTOR

Lawless

1. These particulars are set out as a general outline only for guidance to intending Purchasers or Lessees, and do not constitute any part of an offer or contract. Any intending Purchasers, Lessees or Third Parties should not rely on them as statements or representations of fact, but must satisfy themselves by inspection, searches, enquiries, surveys or otherwise as to their accuracy. CBRE Limited as such cannot be held responsible for any loss or damage including without limitation, indirect or consequential loss or damage, or any loss of profits resulting from direct or indirect actions based upon the content of these particulars. 2. All internal and external images of the development are computer generated images and are indicative only. All images used, including computer generated images and photography, are for illustrative purposes. Individual features may vary. Furniture shown in images is not included in sales. 3. All floorplans are for approximate measurements only. Exact internal areas, layouts and sizes may vary. All measurements are within a reasonable tolerance in accordance with the sales contract. 4. The development name One Crown Place is for marketing purposes only and the Post Office may not include this within the determined postal address.

Developed by

MTD
MALAYSIA

Advised by

GPP
GreenPlace Partners

Sales Agents

CBRE

Interior Architecture

STUDIO ASHBY

FLANAGAN
LAWRENCE

ONE CROWN
PLACE