

The City Scene

NO.2 | WINTER 2017

THE CITY



THE NEWBIES

Temper, Gul & Sepoy and more



FITNESS DIRECTORY

A round up of gyms and fitness classes in the area

SHOREDITCH



SPOTLIGHT

One Crown Place Through the eyes of Sophie Ashby

ARCHITECTURE WITH
A BEATING HEART

WINTER
WARMERS

FREE COFFEE
SEE PAGE 15



ONE CROWN
PLACE

EC2 RESIDENCES | OFFICES | RETAIL | CLUBHOUSE

New openings, news,
local views and reviews.
Your guide to all
that's happening in and
around One Crown Place.

04-05 The newbies

06-07 Objects of desire

08-11 Through the eyes of Sophie Ashby

12-13 Fitness directory

14 Barry's big banana shake

15 Cool beans

16-17 Upcoming events

18-21 Architecture with a beating heart

22-23 Winter warmers

FEATURE

The newbies

The new players that are changing the City’s social scene.



Temper (Just Opened)

Neil Rankin’s newest open fire pit restaurant, Temper City, serves BBQ meats and poultry alongside curry, tandoor roasted meats and home-made roti breads in the City of London.

2 Angel Court, 30 Throgmorton Street, London EC2R 7HJ 11 minutes walk
temperrestaurant.com



Gul & Sepoy (Just Opened)

Brought to Spitalfields by husband and wife team Harneet and Devina Baweja, this brand new Indian restaurant will pair the flavours of northern India with dishes from the more relaxed south west. All the dishes will be served for sharing and are designed to be eaten together.

65 Commercial Street, London E1 6BD 13 minutes walk
gulandsepoy.com

Bob Bob Cité (January 2018)

A sibling restaurant of the iconic Soho restaurant, Bob Bob Cité is set to open on level three of the Leadenhall Building. Headed up by the French Michelin-starred chef Eric Chavot, the restaurant will have a more urban style. The “press for Champagne” button and all-booth seating will also feature.

122 Leadenhall Street, London EC3V 4AB 14 minutes walk

Bloomberg Arcade

The recently launched Bloomberg Arcade has created a culinary and cultural destination in the heart of the Square Mile. Running through the site of Bloomberg’s new European headquarters, the covered pedestrian arcade will comprise ten independent restaurants offering a variety of cuisines and dining styles, seven days-a-week.

Cannon Street, London EC4N 8BN
 15 minutes walk
bloomberg.com/London



Ahi Poké

Having introduced the exotic Hawaiian food bowl trend to London, Ahi Poké will bring its sustainably sourced fish and colourful combinations to Bloomberg Arcade.



Homeslice

Having begun life from a hand-built mobile wood-fired oven in 2011, Homeslice is now renowned for its award-winning 20-inch pizzas, also served by the slice. With restaurants in Shoreditch, Neal’s Yard and Fitzrovia, Bloomberg Arcade will be its fourth bricks-and-mortar site.



Bleecker Burger

After running successful pop-ups across the capital, Bleecker Burger opened its first permanent space inside Spitalfields market in early 2015. Known for using quality ingredients sourced in the UK, Bleecker Burger is regularly named among London’s best burgers.



Koya

The team behind popular Soho Japanese restaurant, Koya will open a second site under the considered direction of Head Chef Shuko Oda. Koya specialises in traditional Japanese dishes, including Sanuki Udon noodles freshly made daily, as well as a unique Japanese breakfast menu.



Caravan

Known for its ‘well-travelled’ all-day-dining menu, relaxed antipodean-style weekend brunch and speciality coffee, courtesy of sister company Caravan Coffee Roasters. The restaurant’s menu draws inspiration from around the world, whilst remaining rooted in a commitment to use the best of local and seasonal produce. Caravan will open its fourth London site in Bloomberg Arcade, following Exmouth Market, King’s Cross and Bankside.



Vinoteca

Inspired by the wine bars of Spain and Italy, Vinoteca will open its sixth wine bar, restaurant and wine shop within Bloomberg Arcade offering an eclectic selection of 200 wines from their award-winning list spanning 21 countries, alongside an ever-changing selection of paired dishes created with fresh and seasonal produce.



SUNGLASSES by CUTLER AND GROSS

£300

cutlerandgross.com

55 Brushfield Street, London E1 6AA 🚶 11 minutes walk



WOMEN'S SOUPLESSE TRAINING JACKET by RAPHA

£160

rapha.cc

61-63 Brushfield Street, London E1 6AA 🚶 11 minutes walk



AYLA CLOUS BELT BY ZADIG AND VOLTAIRE

£210

zadig-et-voltaire.com

113 Commercial Street, London E1 6BG 🚶 11 minutes walk



EVERYWHERE DUFFEL BAG BY LULULEMON

£138

lululemon.co.uk

109 Commercial Street, Spitalfields, London E1 6EW 🚶 11 minutes walk

Objects of desire



MEN'S BREVET WINDBLOCK JERSEY by RAPHA

£145

rapha.cc

61-63 Brushfield Street, London E1 6AA 🚶 11 minutes walk



AGNES BOOT by RAG AND BONE

£450

rag-bone.com

107a Commercial Street, London E1 6BG 🚶 11 minutes walk



CITY GENT WHANGEE W1 UMBRELLA by LONDON UNDERCOVER

£150

londonundercover.co.uk

20 Hanbury Street, Spitalfields, London E1 6QR 🚶 12 minutes walk



PACEBREAKER SHORTS by LULULEMON

£62

lululemon.co.uk

109 Commercial Street, Spitalfields, London E1 6EW 🚶 11 minutes walk

SPOTLIGHT

Through the eyes of Sophie Ashby



Sophie Ashby founded her interior design and creative direction practice, Studio Ashby, in 2014 at the age of 25. Based in Notting Hill, Studio Ashby was shortlisted for the International Interior Designer of the Year 2015, 2016 and 2017. Here, we reveal the design inspirations for the interiors of nine exclusive apartments at One Crown Place.

The natural based palette is layered with muted Georgian tones. Bolder colours come from the surrounding furniture and artwork, whilst the walls are adorned with a selection of art sourced from local galleries and artists to form a look that appears to have been established over time.

Studio Ashby used an array of different marbles throughout, exposed in their natural form. One of the stand-out moments of the scheme is the integration of crafted tactile finishes and practical kitchen design. The studio used

pyrolave glazed volvic lava and pippy elm to adorn each kitchen island, fusing the raw and refined. In the centre of the master en suite, rich, Verde Antique marble has been set alongside muted polishes, plaster and natural Atlantic stone.

During the planning, Studio Ashby worked with KPF's dynamic architecture style and floor plate, to preserve the wide vistas, keeping the façade free of built-in joinery. This has worked to strengthen the connection between the interior and exterior.



CGIs of apartments at One Crown Place

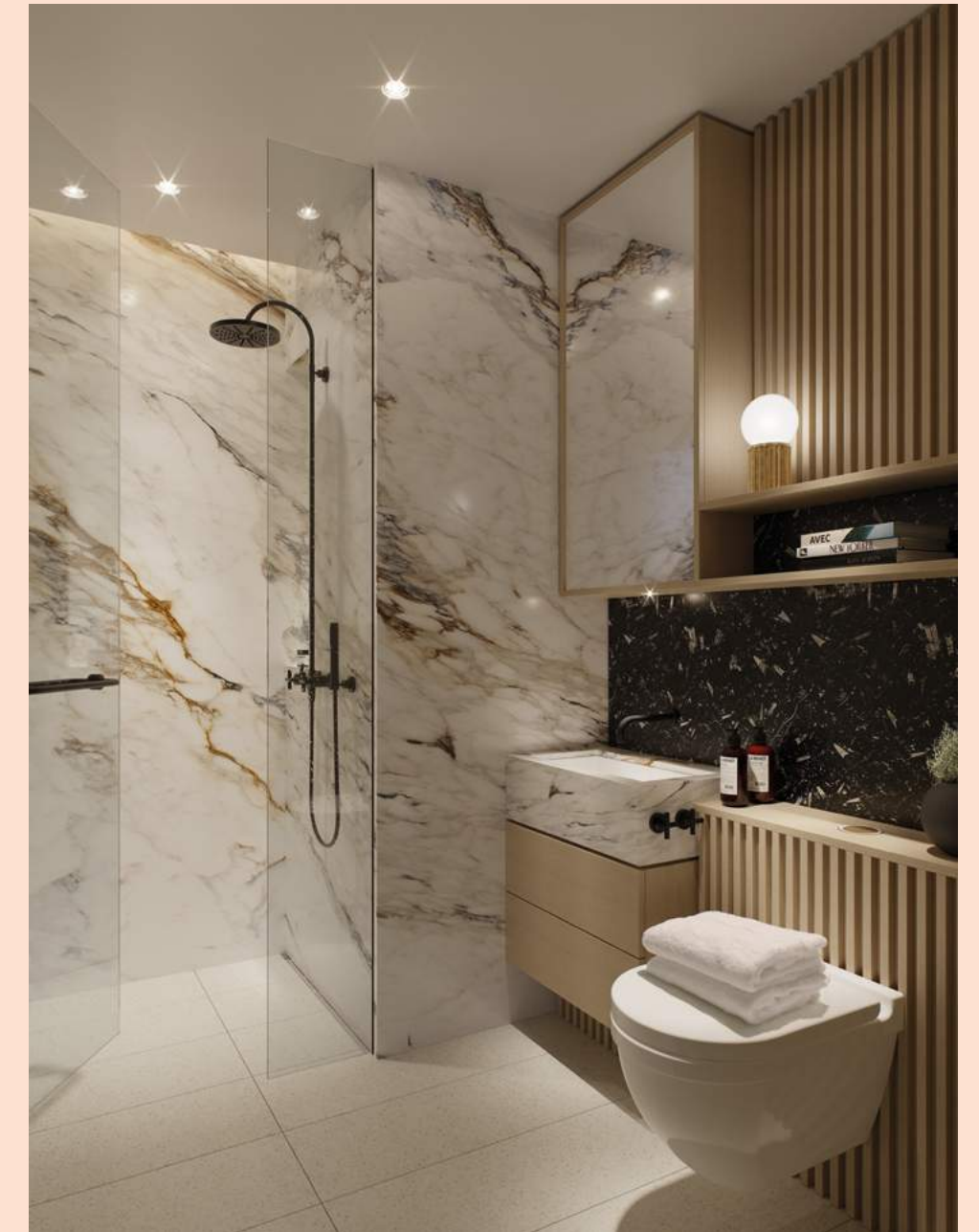
“We work with local craftsman, artists, makers and creators to produce interiors that are personal and alive”

The 'Sophie Ashby Collection' – a combination of one and three bedroom units alongside three bedroom duplexes – are inspired by the City of London's historic past and the interiors combine modern luxury with handcrafted tradition. Combining three key sensibilities: 'curating', 'collecting' and 'commissioning', Studio Ashby has created an aesthetic inspired by the imagined homeowner, an individual interested in the arts and a love for the rich history of East London.

Sophie Ashby commented: “We curate each space and each project so carefully in the hope that we might tell a few stories that our viewer truly connects with. We work with local craftsman, artists, makers and creators to produce interiors that are personal and alive.”

Studio Ashby's passion for beautiful objects is made apparent throughout her designs, using a carefully-curated selection of memorable touches showing traditional craftsmanship. To inject the apartments with a strong creative energy, Studio Ashby commissioned potters, painters, wood turners and marble spicers to create a unique environment that blends seamlessly with the outside environment.

To find out more, email onecrownplace@cbre.com or visit the One Crown Place Marketing Suite at 54 Wilson St EC2A 2ER



FEATURE

Fitness directory

A round up of local gyms and fitness classes in the area.



Barry’s Bootcamp

For those wanting to be pushed to their limit, try Barry’s Bootcamp – the original high intensity workout. Each class is different and can burn up to 1,000 calories a class. With a focus on a different muscle each day and a uniquely addictive energy you are guaranteed to see a transformation.

Tip: For the 7.10 and 18.40 classes book 7 days before at 12.00. It is competitive to get a spot!

2 Worship Street, London EC2A 2AH 🚶 3 minutes walk
barrysbootcamp.com



Heartcore and Blue Cow Yoga

With a combination of Dynamic Reformer Pilates and Barre, Heartcore provides an unparalleled fitness experience to sculpt physiques in ways that traditional exercise simply can’t match. Its sister studio, Blue Cow Yoga, offers a range of inclusive and accessible yoga classes – a great escape from the hustle and bustle of the city!

Tip: Look out for Rodrigo’s reformer pilates class, also remember £1 for the lockers.

7-11 Moorgate, London EC2R 6AF 🚶 12 minutes walk
heartcore.co.uk
bluecowyoga.com



GymClass

Known to be one of the hardest workouts in London, Helle Hammonds, ex Barry’s Bootcamp trainer, has created a workout combining personal trainer results and positive group fitness vibes. The classes uses athletic HIIT and strength training to burn fat whilst developing core strength, fitness and balance.

Tip: The trainers know everybody’s name so try and hide behind your punch bag!

50 Gun Street, London E1 6AH 🚶 2 minutes walk
gym-class.co.uk



KOBOX

Fight club with the atmosphere of a night club. This boutique boxing studio will get you fit without getting hit! The high intensity boxing based classes combine heavy bag boxing routines with functional strength training. Each KOBOX class will torch calories, improve your co-ordination, strengthen and lengthen your body and empower your mind.

Tip: The 30 minute express class at 1:15pm, exclusive to the City location, is perfect for a lunch time power hour!

85 London Wall, London EC2M 7AD 🚶 7 minutes walk
koboxlondon.com



1 Rebel

The place to go for high-intensity group fitness. This pay-as-you-train gym boutique has two studios, Reshape and Rumble, offering 30 and 60 minute classes. Every class is set to specially curated playlists by the best DJs in the business. Re-Shape, designed to condition and re-sculpt and Rumble, a cardio boxing battle.

Tip: To guarantee you look better than when you walked in, book yourself an express blow dry or men’s cut!

Broadgate Circle, London EC2M 2QS 🚶 3 minutes walk
1rebel.co.uk



Psycle

A cycling-only hotspot offering 45, 60 and 90 minute classes from early morning until late at night. These pay-as-you-go classes offer a fully immersive total body workout catering to all fitness levels coupled with neon lights and club tunes.

Tip: Pre-order your smoothie from The Energy Kitchen before class to jump the post class rush.

17-23 Whitby Street, London E1 6JU 🚶 10 minutes walk
psyclelondon.com



Frame

FRAME has a feel-good, fun approach to fitness. Pay-as-you-go classes from ‘Bend it like Barbie’ to ‘Rocket Yoga’ the variety of classes and niche training options will keep you excited and wanting to try more.

Tip: Check out the Shop @ Frame where different fitness clothing brands are shown each month.

29 New Inn Yard, London EC2A 3EY 🚶 9 minutes walk
moveyourframe.com

MILKSHAKE

Barry's big banana shake



Sandy Macaskill, Co-founder and Master Trainer, Barry's Bootcamp

“Only a few years ago, women were scared to even look at a protein shake, as if it had secret powers like Popeye’s spinach. It just doesn’t work that way - as much as teenage boys wished it did. Man or woman, after a workout you need to fuel. Training essentially breaks your muscles down, but that’s only half of the journey for lean, slim, sexy muscles. We need to help them repair themselves and that’s where protein comes in. Shakes are simply an efficient and tasty way to give the body what it needs at the right time”.

Barry's Big Banana Shake

- 8 Oz. Unsweetened almond milk
- 1/2 Cup of banana
- 1/2 Cup of strawberries
- 1 Scoop vanilla protein
- 1 Cup of ice
- (Blend for 30 seconds)

OFFER

Cool beans



Rapha Clubhouses are inspiring meeting places for road cyclists and fans of the sport. Inside you'll find a retail space stocked with the latest Rapha products, a café serving fine coffee and food, as well as an extensive programme of live racing, rides and events. Also home to the local chapter of the Rapha Cycling Club, the Clubhouses can be found in vibrant cycling cities around the world.

The Spitalfields Clubhouse can be found in the heart of Old Spitalfields Market, in a former bank, a few minutes walk from Liverpool Street Station. Upstairs, you can browse the Rapha range and relax in a café that serves the finest food and coffee. Multiple screens show live and classic racing throughout the year, with the outside space on the market side of the Clubhouse providing a large viewing area. Downstairs offers a dedicated women's space containing Rapha's full women's range.

The Clubhouse opened in late 2015 and will be celebrating its second birthday this December with a weekend of celebrations.

61-63 Brushfield Street, London E1 6AA
11 minutes walk
www.rapha.cc

To claim your free coffee –
show this copy of The City Scene
at the till



Upcoming events

November



BOOK LAUNCH: 14 NOVEMBER 2017, 6.30PM-8.30PM

Maryam Eisler's voices: East London

Containing hundreds of new photographs and interviews with local icons, celebrities and everyday people, Voices: East London gives the reader insight into the lifestyle of leading artistic personalities including; Gilbert & George; cultural leaders like long-time resident Charles Saumarez Smith, Chief Executive of the Royal Academy of Arts; Iwona Blazwick, Director of the Whitechapel Art Gallery; Maureen Paley and Victoria Miro, pioneering gallerists.

Hatchard's Piccadilly, 187 Piccadilly, London W1J 9LE

December



2-10 DECEMBER 2017

Spitalfields Music Festival

Spitalfields music festival returns for its 41st year with a reinvigorated vision for 2017, reflecting its location in the heart of one of London's most vibrant areas. André de Ridder will be taking the helm as artistic curator and is set to curate a vibrant and exciting festival, packed with international artists and visionary collaborations to celebrate classical music.

spitalfieldsmusic.org.uk



9-10 DECEMBER 2017

Renegade craft fair

Renegade is a celebration of creative spirit, attracting emergent and seasoned independent alike. Ring in the festive season and get your holiday shopping done all in just one weekend. Renegade will be serving up unique handmade items from hundreds of Makers, fun DIY workshops, immersive special features, food and drink, lively music, and much more.

Old Truman Brewery, 85 Brick Lane, London E1 6QL
renegadecraft.com/fairs/London

January



©Simon Corder

18-21 JANUARY 2018

Lumiere London 2018

Building on the phenomenal success of Lumiere London 2016, more than 40 UK and international artists will transform the city and offer new perspectives on the capital's iconic architecture, streets and landmarks. Works will be exhibited both north and south of the River Thames, with Covent Garden, Victoria, South Bank and Waterloo added as new destinations for 2018.

visitlondon.com

February



16-20 FEBRUARY 2018

London fashion week

London fashion week will showcase the best of British design, with catwalk shows, presentations, the Designer Showrooms, and events organised throughout the week.

londonfashionweekfestival.com

March



©Tate Modern

8 MARCH-9 SEPTEMBER 2018

The EY exhibition: Picasso 1932

EY exhibition: Picasso 1932 – Love, Fame, Tragedy is one of the most significant shows the gallery has ever staged. More than 100 outstanding paintings, sculptures and works on paper will demonstrate Picasso's prolific and restlessly inventive character. They will strip away common myths to reveal the man and the artist in his full complexity and richness.

Tate Modern, Bankside, London SE1 9TG
tate.org.uk



CGI of One Crown Place

FEATURE

Architecture with a beating heart

by Henrietta Thompson



John Bushell, Principal at KPF

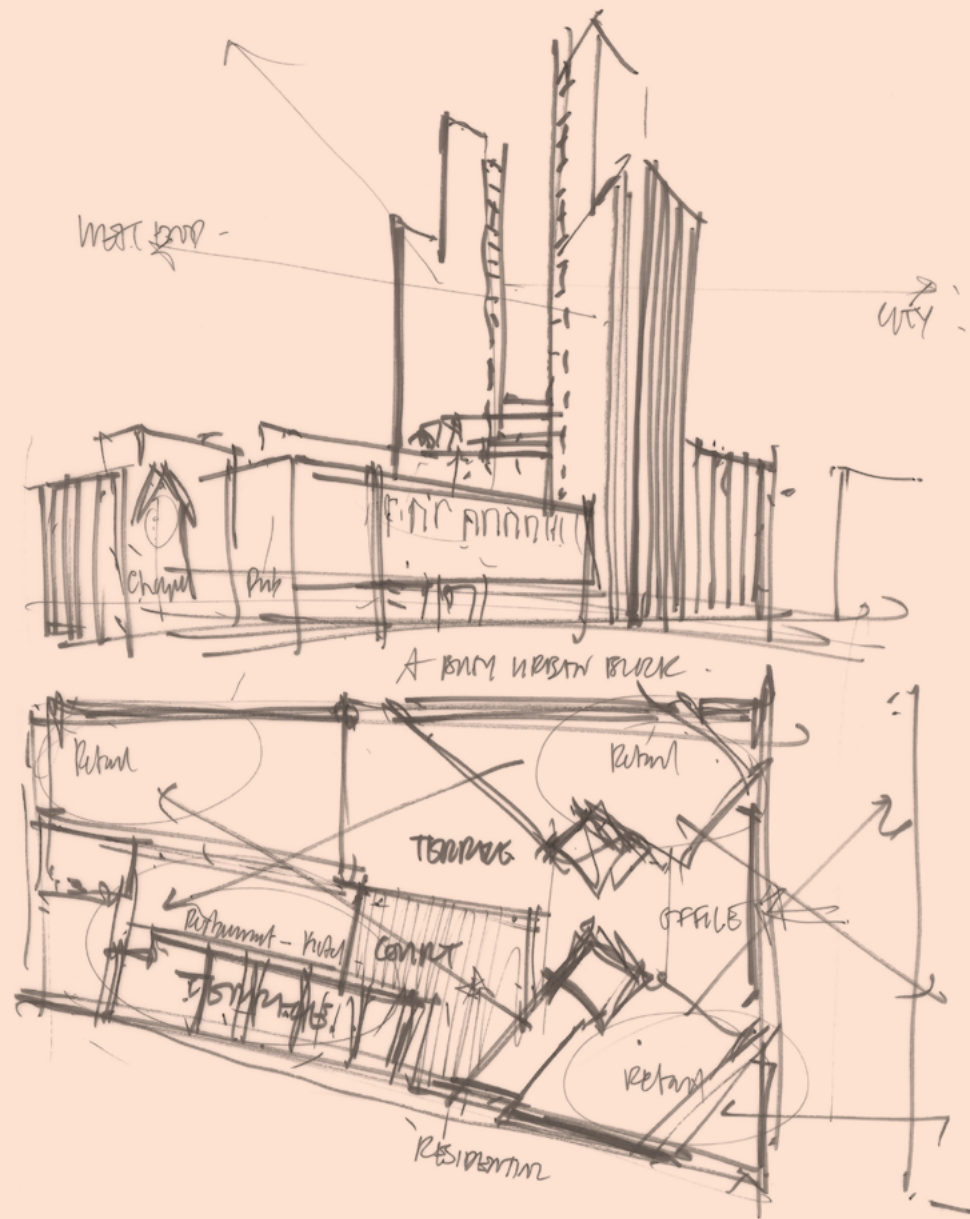
Kohn Pedersen Fox (KPF) is one of the largest architectural firms in the world with offices in London, New York, Hong Kong, Shanghai, Seoul, and Abu Dhabi. It is a practice with an enormous number of celebrated buildings to its name: extra special, extra complex, impossibly impressive towers and skyscrapers are what it does best, and indeed has built its global reputation on since its inception more than 40 years ago.

In London, KPF has been responsible for several glittering trophies for Clifford Chance and KPMG in Canary Wharf, Goldman Sachs' Fleet Street HQ, and the Heron Tower – the tallest building in the City of London's financial district. It has also designed a mixture of other projects such as the mixed-use South Bank Tower and luxury residences, Aykon London, alongside a significant portfolio of smaller scale projects across twelve London Boroughs.

For One Crown Place, the brief was to design a development that needed to fit seamlessly into an area fast becoming one of London's hottest new neighbourhoods with its fashionable members' clubs and five star hotels, street food markets, designer boutiques and Dickensian cobbled backstreets. It had to be a building that would contribute to the locale's soul, and not sap it. To feel as though it was always meant to be there.

John Bushell, principal at KPF and the architect personally overseeing One Crown Place, understands these necessities better than most. "This project means a great deal to me; I feel passionately about it," he says. "We are a modernist firm and embrace modern architecture but we feel One Crown Place should have soul and character, humanity and a rich spatial and material experience."

The design, he explains, is very particular to both the client and the neighbourhood, and it could never have been any other way. It's unusual for a tower in a conservation area not to go to a planning enquiry, he says, "It won over the local council immediately. This site – a conservation area right next to the City – had unsuccessful planning applications for 20 years, but Hackney see this as a building truly befitting their borough. It's not displacing the types of company that have made Hackney successful.



His vision for One Crown Place was to respect its context, taking inspiration from the buildings and materials of the area's past and bringing them into the present. "We have evolved this into a really intricate and innovative design which will transform the local area," he says.

Beyond taking the local flavour and historical context into account, says Bushell, it's all in creating the perfect mix. "We wanted to come up with a design that invests all in one go – through the mix of residential, offices, hotel and retail – all the diversity and complexity that would naturally evolve over the next decade."

KPF was tasked with designing two residential towers comprising 246 private apartments located above a podium office space to meet the requirements of modern day occupiers who want to live and work without the burden of a tiresome commute. Alongside the twin skyscrapers will be a sensitively restored 22,000 sq ft row of Georgian houses, soon to become home to a residents' clubhouse and a boutique hotel. With every detail considered for its role as part of this bigger whole, even One Crown Place's terracotta clad towers are a nod to the tones of the Georgian buildings' brickwork.

Further to their credit, Bushell and his team worked closely with the interior designers Bowler James Brindley and Studio Ashby, who were able to add insight into how residents will use the spaces. During the planning, Studio Ashby worked with KPF's dynamic architecture style and floor plate, to preserve the wide vistas, keeping the façade free of built-in joinery and strengthening the connection between the interior and exterior still more.

A dramatic new addition to London's iconic skyline, the design of One Crown Place celebrates changing perceptions of what the City stands for: the old-meets-new character of the EC2 postcode that artfully combines original heritage buildings with striking modern architecture. Though KPF do them so well, it is an antidote to the capital's ubiquitous glass towers, says Bushell. "This is one of the jewels in the crown: a really intricate mixed use scheme which will transform the area. We considered at great length how to have two towers on the site from which the many views would not appear over-bearing and the vertical forms would be accentuated." It's big architecture with a beating heart. Who would have thought it could be possible?



CGIs of One Crown Place

"We have evolved this into a really intricate and innovative design which will transform the local area"



Winter warmers

A selection of our favourite cosy pub fires, toasty rooftop fire pits and crackling chimineas in and around Shoreditch. The perfect places to enjoy a drink with friends this winter.



Queen of Hoxton

The Queen of Hoxton has turned their rooftop into a Moroccan Medina for the winter months. Moroccan spices and Shisha scents permeate the night air as you sit around crackling chiminea fireplaces and enjoy a Spiced Hot Buttered Rum or Shimmering Gold Pomegranate Bellini. There's even a giant Moroccan lamp you can sit inside!

1-5 Curtain Road, London, EC2A 3JX 🚶 6 minutes walk
queenofhoxton.com



The Hoxton

Set in the middle of the vibrant Shoreditch nightlife scene, this hip hotel opened in 2006 and includes 201 rooms plus the renowned Hoxton Grill which offers America style dishes from breakfast until late. The hotel lobby features a large original fireplace with comfy sofas and armchairs to relax in with a cup of coffee, a glass of wine or, on special occasions, a hot toddy!

81 Great Eastern Street, London EC2A 3HU 🚶 9 minutes walk
thehoxton.com



©Hg2.com

The Golden Heart

A popular pub close to Spitalfields where Tracy Emin is a local and an old-fashioned jukebox takes pride of place, alongside the landlady who has run the pub for thirty years. This cosy, unpretentious pub has several fireplaces that you can gather around on cold winter evenings.

110 Commercial Street, London E1 6LZ 🚶 11 minutes walk



The Boundary

The Boundary's heated rooftop is open all year round, but in the winter you can enjoy a warming selection of hot cocktails, raclette and fondue served by the open-pit fireplace with panoramic views of East London. 'The Boundary experience' also allows dinners to book pre-dinner drinks hosted within the rooftop Glass Orangery, followed by dinner at Tratra, their restaurant modelled on a French modern bistro.

2-4 Boundary Street, London E2 7DD 🚶 12 minutes walk
boundary.london



Shoreditch House

Shoreditch House is a members' club with bedrooms in a converted warehouse in East London. Alongside a gym, sauna, spa, swimming pool and rooftop terrace, the kitchen is a large, casual dining room with an open kitchen, deli bar, fireplace and views over the City and Shoreditch. It serves a menu of House favourites and seasonal dishes with middle-eastern influences.

Ebor Street, London E1 6AW 🚶 12 minutes walk
shoreditchhouse.com

ONE CROWN PLACE

Reflecting the old-meets-new character of the City and Hackney, One Crown Place comprises existing period buildings with two new residential towers offering 246 apartments. The six-floor podium features 15,500sqm of high-quality office space, with a variety of retail space at ground level. The boutique hotel and members' club occupy the elegant row of Georgian terraces on Sun Street.

RESIDENTIAL MARKETING SUITE

54 Wilson Street
London EC2A 2ER
020 7205 2697

OPENING HOURS

Please drop in: Weekdays 10am-7pm
Saturday 10am-3pm (by appointment only)

ONECROWNPLACE.COM

Computer generated images of One Crown Place.
Travel times are taken from Google Maps.

Developed by
AlloyMtd
Advised by
CBRE