



ONE CROWN

PLACE

THE CITY'S

GOT

A

NEW

EDGE



OVERVIEW

OVERVIEW

ONE CROWN PLACE HAS NOW JOINED ONE OF THE WORLD'S MOST RECOGNISABLE SKYLINES. HOME TO 246 NEW APARTMENTS, HIGH-QUALITY OFFICE SPACE, A BOUTIQUE HOTEL AND MEMBERS' CLUB, IT'S A COMPLETE DESTINATION AT THE POINT WHERE THE CITY LOOSENS ITS TIE AND SHOREDITCH PULLS UP ITS SOCKS.

WE'VE ESTABLISHED A PLACE WHERE TRADITION IS SOMETHING TO BE INSPIRED BY, NOT ADHERED TO, AND INDIVIDUALITY MEANS MORE THAN WHAT WE WEAR. AND BY INVITING A NEW GENERATION TO MAKE THEIR HOME HERE, WE'RE CHALLENGING PERCEPTIONS OF WHAT THIS COMMON GROUND BETWEEN SHOREDITCH AND THE CITY STANDS FOR TODAY.

02

03

ONE CROWN PLACE

ONE CROWN PLACE

TRUE CHARACTER



ONE CROWN PLACE



WITH ONE CROWN PLACE, WE'VE BROUGHT A NEW DESTINATION TO LIFE. IMAGINED BY KPF ARCHITECTS, TWO PRISMATIC TOWERS HOST BRAND NEW RESIDENCES, RISING 28 AND 33 STOREYS INTO THE SKY.

AT GROUND LEVEL STANDS A 6-STOREY BUILDING – HOME TO 10,650SQM OF HIGH-QUALITY OFFICE SPACE – A VARIETY OF RETAIL UNITS AND A BOUTIQUE HOTEL AND MEMBERS' CLUB OCCUPYING SUN STREET'S ELEGANT ROW OF GEORGIAN TERRACES.

INNOVATIVE IN DESIGN, WARM IN CHARACTER AND WITH EVERY DETAIL CONSIDERED FOR ITS ROLE IN THE BIGGER PICTURE, THIS IS BIG ARCHITECTURE WITH A BEATING HEART.

ONE CROWN PLACE



OVERVIEW

OVERVIEW

ONE CROWN PLACE

01  

04 

07 

10 

13 

16 

19 

22 

02  

05 

08 

11 

14 

17 

20 

23 

03 

06 

09 

12 

15 

18 

21 

24 

ONE CROWN PLACE

ONE CROWN PLACE

WHERE SHOREDITCH PICKS UP PACE AND THE CITY TAKES ITS TIME

08

- BARS & RESTAURANTS

01 MRS FOGGS

02 LEROY

03 BRAT

04 SMOKING GOAT

05 GLORIA

06 BAR DOURO (CITY)

07 LIVERPOOL ST GRIND

08 CLOVE CLUB

09 AVIARY

10 CITY SOCIAL

11 EATALY

12 GAUCHO

13 SUSHI SAMBA
- RETAIL

01 SPITALFIELDS:
CHANEL
COS
& OTHER STORIES

02 GOODHOOD

03 MONOLOGUE

04 APC

05 ROYAL EXCHANGE:
BOODLES
HERMÈS
LOUIS VUITTON
TOM DAVIES

06 HOUSE OF HACKNEY

07 AESOP

08 LABOUR & WAIT

09 TRACEY NEULS

10 MARKS & SPENCER

11 GAP
- HOTELS & MEMBERS' CLUB

01 NOBU HOTEL

02 HART HOTEL

03 THE NED

04 SHOREDITCH HOUSE

05 THE MONTCALM

06 THE CURTAIN

07 SOUTH PLACE HOTEL

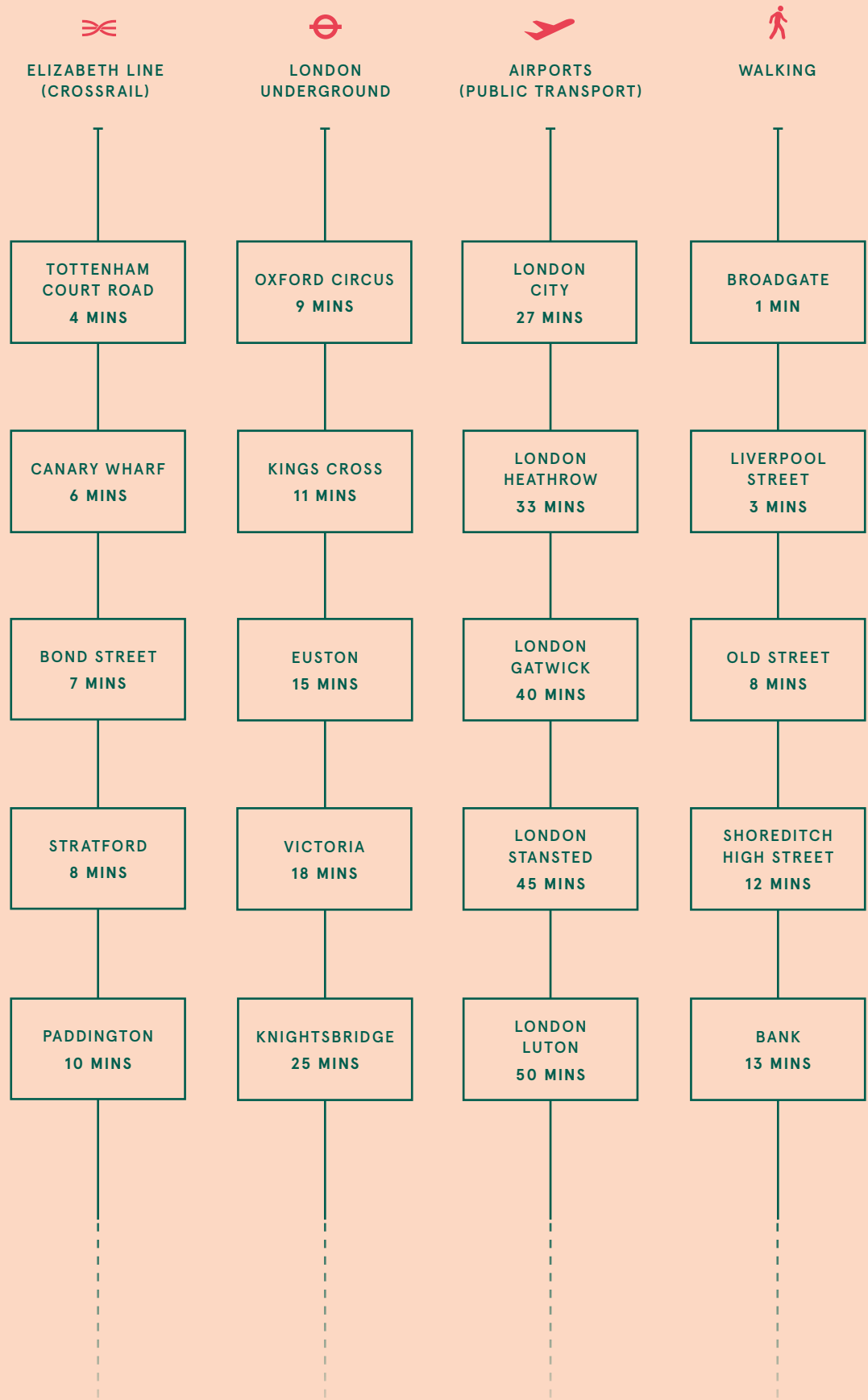
08 DEVONSHIRE CLUB & HOTEL

09 ANDAZ AT LIVERPOOL STREET

ONE CROWN PLACE

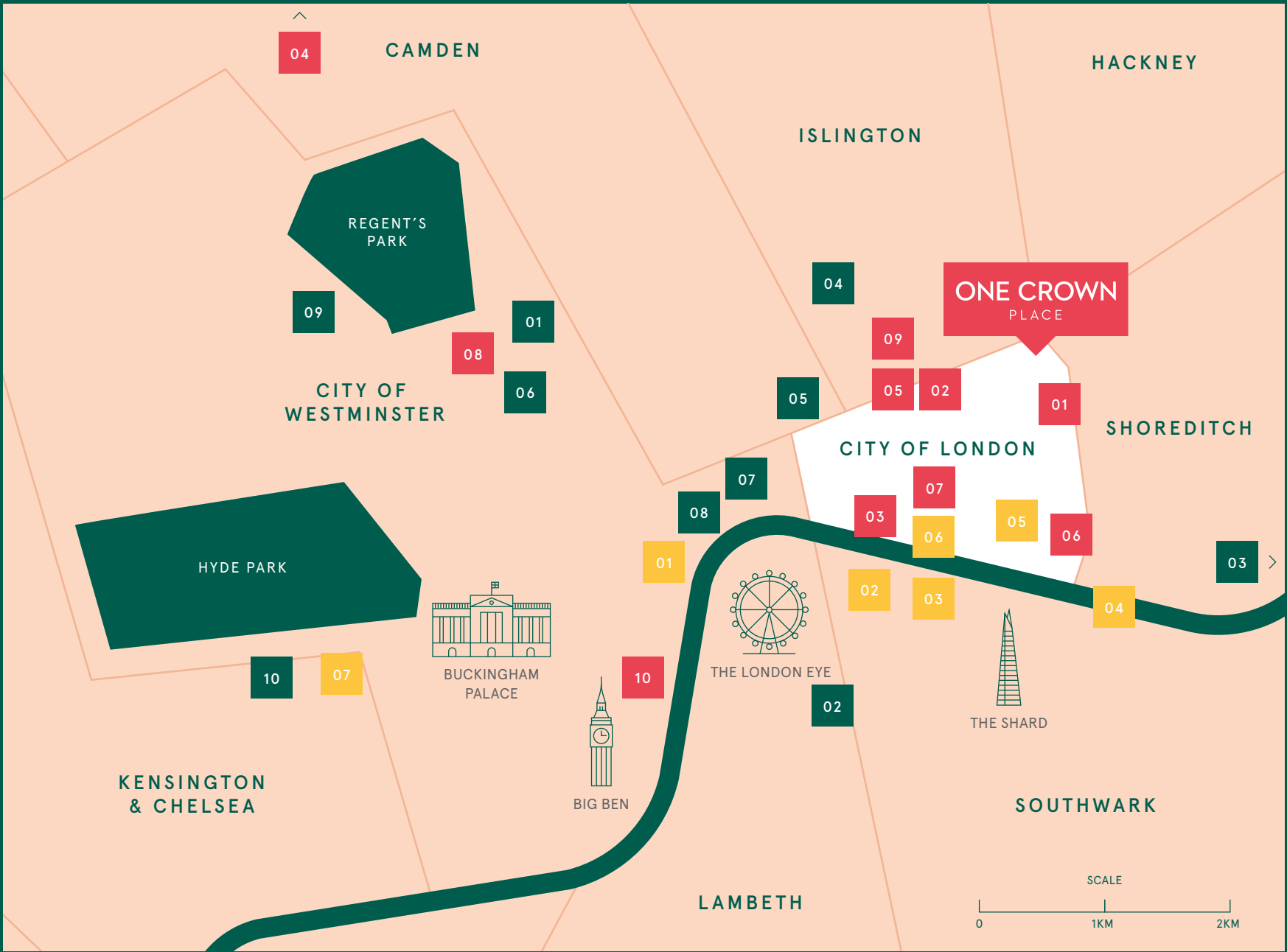


GETTING AROUND



Travel times are taken from Citymapper.com, Crossrail.co.uk and Google Maps.
Underground and train times are from Liverpool Street Station.

DIFFERENT CLASS



UNIVERSITIES	SCHOOLS	LANDMARKS
01 UNIVERSITY COLLEGE LONDON (UCL) 14 MINS	01 THE LYCEUM PREPARATORY SCHOOL 2 MINS	01 TRAFALGAR SQUARE
02 LONDON SOUTH BANK UNIVERSITY 17 MINS	02 CITY OF LONDON SCHOOL FOR GIRLS 12 MINS	02 THE TATE MODERN
03 QUEEN MARY UNIVERSITY 18 MINS	03 CITY OF LONDON SCHOOL FOR BOYS 13 MINS	03 THE GLOBE
04 CITY UNIVERSITY OF LONDON 19 MINS	04 HIGHGATE SCHOOL 14 MINS	04 TOWER BRIDGE
05 UNIVERSITY OF THE ARTS 20 MINS	05 CHARTERHOUSE SQUARE SCHOOL 16 MINS	05 THE GHERKIN
06 UNIVERSITY OF WESTMINSTER 20 MINS	06 DAVID GAME COLLEGE 17 MINS	06 THE ROYAL EXCHANGE
07 LONDON SCHOOL OF ECONOMICS 22 MINS	07 ST PAUL'S CATHEDRAL SCHOOL 19 MINS	07 HARRODS
08 KING'S COLLEGE LONDON 22 MINS	08 SOUTHBANK INTERNATIONAL SCHOOL 20 MINS	
09 LONDON BUSINESS SCHOOL 27 MINS	09 DALLINGTON SCHOOL 21 MINS	
10 IMPERIAL COLLEGE LONDON 38 MINS	10 WESTMINSTER SCHOOL 27 MINS	

THE BUILDING

THE BUILDING

12

BROUGHT

TO

LIFE

13

ONE CROWN PLACE

ONE CROWN PLACE

QUIET

LUXURY



A computer generated image of a kitchen and winter garden.





A computer generated image of the entrance hall in a 1 bedroom apartment on the 18th floor.



A computer generated image of a bathroom and dressing room.

DESIGNED BY BOWLER JAMES BRINDLEY, OUR LIVING SPACES DEFINE MODERN-DAY ELEGANCE. THE ITALIAN-MADE ARCLINEA KITCHENS ARE QUIETLY LUXURIOUS, COMPOSED OF CAREFULLY SOURCED MATERIALS FROM ACROSS THE GLOBE AND DETAILS INSPIRED BY THEIR ECLECTIC SURROUNDINGS. MEANWHILE, CLEVER ZONING CREATES FLEXIBLE LIVING AND ENTERTAINING AREAS. THE RESULT IS A BEAUTIFULLY DESIGNED BUILDING WITH LIGHT-FILLED SPACES THAT ARE WARM AND CONTEMPORARY, INDUSTRIAL YET GLAMOUROUS.

IN THE BATHROOMS, WE'VE JUXTAPOSED COOL WHITE TILING WITH THE WARM HUES OF CONTRASTING ACCENTS AND FITTINGS WHICH REFERENCE THE BUILDING'S EXTERIOR. LOOK CLOSER, AND WE'VE ALSO PAID RESPECT TO OUR NEIGHBOURS, WITH DETAILS SUCH AS THE BRICKWORK PORCELAIN TILING ECHOING THE INDUSTRIAL FABRIC OF THIS UNIQUE LOCATION.

THE BEDROOMS ARE INVITING, INDULGENT SPACES IN WHICH TO RETREAT, WITH BESPOKE FITTINGS SUCH AS THE B&B ITALIA WARDROBES LENDING ADDED TOUCHES OF LUXURY AND CRAFTSMANSHIP. BE GREETED EACH MORNING BY PERFECTLY FRAMED CITY OR SHOREDITCH VIEWS AS YOU PULL BACK THE CURTAIN.





A computer generated image of a south-facing, City view 2 bedroom apartment.



A computer generated image of the shared workhub in the Seventh Floor amenities space.

SHARED EXPERIENCE

DISCOVER COMMUNAL LIVING AREAS YOU'LL LONG TO SPEND TIME IN. QUIET SPACES SUCH AS OUR WORKHUB LET YOU WORK FROM HOME IN THE COMPLETE COMFORT, WHILE OUR OTHER SHARED SPACES HAVE BEEN CONCEIVED TO FOSTER A SENSE OF COMMUNITY AMONG RESIDENTS – PLACES WHERE INTERACTION AND COLLABORATION ARE NURTURED. DESIGNED BY SOPHIE ASHBY, IT'S HERE WE INVITE YOU TO HOST YOUR OWN GUESTS, MEET AND MAKE YOURSELF AT HOME.



A computer generated image of the shared gym in the Seventh Floor amenities space.





28

AT YOUR SERVICE

29

OUR CONCIERGE MEANS YOU'RE IN SAFE HANDS 24/7. FROM IRREPLACEABLE LOCAL KNOWLEDGE ON DRY CLEANING, BEST BARS AND RESTAURANT RECOMMENDATIONS, TO BOOKING APPOINTMENTS AND THEATRE TICKETS, IT'S YOUR DEDICATED ENCYCLOPAEDIA FOR ALL THINGS SHOREDITCH AND THE CITY. THEY ALSO OFFER SERVICES SUCH AS LAUNDRY, HOUSEKEEPING AND PRIVATE CAR TRANSFERS, AS WELL AS DELICIOUS COLD FOOD SELECTIONS AND HAMPERS TO ENJOY IN YOUR APARTMENT OR ON THE ROOF TERRACE.

COLLABORATING CLOSELY WITH STUDIO ASHBY, WE'VE CURATED THE SEVENTH FLOOR TO FEEL LIKE AN EXTENSION OF YOUR HOME. THE REAL ARTISTRY OF ITS SPACES COMES THROUGH, NOT JUST IN THE SELECTION OF FURNITURE, LIGHTING AND ART, BUT ALSO IN THE USE OF A NATURAL PALETTE OF MATERIALS AND TEXTURES.

- GYM (WITH STATE-OF-THE-ART EQUIPMENT)
- HEALTH & BEAUTY TREATMENT ROOM
- ART DECO-STYLED SCREENING & PRESENTATION ROOM
- PRIVATE RESIDENTS' LOUNGE
- ROOF TERRACE WITH SERENITY GARDEN
- WORKHUB (IDEAL FOR WORKING FROM HOME)
- PRIVATE DINING ROOM (ALSO FOR HOSTING MEETINGS AND PRESENTATIONS).

IT'S WITHIN THESE SPACES WE'LL BE HOSTING REGULAR EVENTS FOR RESIDENTS AND THEIR GUESTS. FROM WINE TASTING TO FOOD POP-UPS, AND UNIVERSITY TALKS TO CRAFT-FOCUSED WORKSHOPS, WE DELIVER IT ALL IN COLLABORATION WITH LOCAL PARTNERS AND AT NO COST TO YOU.



A computer generated image of the bar in the Hotel's private members' club.

HOTEL & MEMBERS' CLUB

ONE CROWN PLACE'S EIGHTEENTH-CENTURY GEORGIAN TERRACES HAVE BEEN RESTORED, SOON TO BE HOME TO A HOTEL DESIGNED BY BOWLER JAMES BRINDLEY AND OPERATED BY BESPOKE HOTELS. 41 BEDROOMS AND A 100-COVER DESTINATION RESTAURANT WILL ACCOMPANY A BRAND-NEW PRIVATE MEMBERS' CLUB, BRINGING THESE BELOVED BUILDINGS BACK TO THEIR FORMER GLORY.

EACH OF THE SIX TOWNHOUSES HAS A UNIQUE PERSONALITY AND THE GROUND FLOOR COMMUNAL AREAS ARE INTERLINKED BY A SERIES OF ROOMS INCLUDING A TASTING ROOM, A GLASS ROOFED RESTAURANT, A LOBBY WITH A RECEPTION PARLOUR FOR RELAXED CHECK IN, A CLUB LOUNGE WITH A BAR AND AN ADJOINING LIBRARY ROOM.

RESIDENTS CAN TAKE ADVANTAGE OF PRIORITY BOOKINGS AND SPECIAL PROMOTIONAL RATES FOR OUR BOUTIQUE HOTEL AND DESTINATION RESTAURANT –

THE PERFECT PLACE TO PUT UP GUESTS WHEN THEY'RE IN TOWN. RESIDENTS ALSO ENJOY COMPLETE FREE ACCESS TO THE MEMBERS' CLUB FOR ONE YEAR, INCLUDING THE BAR, RESTAURANT – WITH CHANGING, SEASONAL FOOD AND COCKTAIL MENU – AND EVERY OTHER ONE OF ITS EFFORTLESSLY SOPHISTICATED SOCIAL SPACES. WHATEVER THE OCCASION, YOU CAN EVEN BOOK THE HOTEL'S CHEFS FOR GROUP CATERING IN THE SEVENTH FLOOR PRIVATE DINING ROOM.

OUR PARTNERS

WE'RE ASSEMBLING A HOST OF LOCAL PARTNERS TO PROVIDE OUR RESIDENTS WITH EXCLUSIVE PERKS AND DISCOUNTS ON HOTEL ROOMS, CLUB MEMBERSHIPS, RESTAURANTS AND HAIR & BEAUTY APPOINTMENTS. IN DOING SO, WE'VE EMBEDDED OURSELVES WITHIN A THRIVING COMMUNITY OF BRANDS IN BOTH THE CITY AND SHOREDITCH, PULLING TOGETHER THE BEST OF BOTH WORLDS FOR YOU TO ENJOY. GET IN TOUCH WITH OUR SALES TEAM FOR MORE INFORMATION ON THE PEOPLE AND PLACES WE'VE ALREADY BROUGHT ON BOARD.



A computer generated image of the Hotel exterior at dusk.

OURS IS A NEIGHBOURHOOD COME OF AGE – ITS NEW CHARACTER BUILT ON CREATIVITY AND INNOVATION.

JUST AS THE EDGE THAT PUT SHOREDITCH ON THE MAP NOW COMES WITH A DASH OF GLAMOUR AND GLOSS, THE CITY'S ALSO CHANGED ITS STRIPES. ITS CLEAN-CUT STOICISM SHED IN FAVOUR OF A MORE TEXTURED CULTURAL FABRIC OF STREET FOOD HANGOUTS, BOUTIQUE FASHION HOUSES AND CREATIVE COWORK SPACES. A HOTSPOT OF CULTURE AS WELL AS COMMERCE.

THIS IS WHERE A NEW GENERATION OF LONDON'S MAKERS, SHAPERS AND INFLUENCERS THRIVE AND OLD CONVENTIONS ARE PUT TO ONE SIDE.

COMMON

GROUND





Gloria, Great Eastern Street, EC2A 3QR



Farmer J, Broadgate, EC2M 2PF

WHERE SHOREDITCH DRESSES UP



Ozone, Leonard Street, EC2A 4AQ



AND THE CITY SPLITS THE BILL



Juno Rooms, Watling Street, EC4M 9DD



Bar Douro, Finsbury Avenue, EC2M 2PF

MORNING, NOON AND NIGHT, THE CITY AND SHOREDITCH ARE YOURS FOR THE TAKING. SAMPLE SOME OF THE BEST MEDITERRANEAN FOOD NORTH OF THE ALPS, DIP YOUR TOE INTO THE LEAN, GREEN WORLD OF PLANT-BASED CUISINE OR, FOR SOMETHING MORE REFINED, YOU'LL DISCOVER TEN MICHELIN STARRED RESTAURANTS WITHIN A 20-MINUTE WALK.



Rag & Bone, Commercial Street, E1 6BG

THE PLACE

FROM THE HERITAGE BRANDS OF THE ROYAL EXCHANGE TO COMMERCIAL STREET'S BRIGHT BOUTIQUES, DISCOVER GENUINE PROPONENTS OF TIMELESS QUALITY FLYING IN THE FACE OF TODAY'S 'WEAR ONCE' CULTURE – ALL MOMENTS FROM ONE CROWN PLACE. THIS IS WHERE THE CITY WEARS FLATS AND SHOREDITCH PICKS OUT HEELS.

THE LONDON LOOK



Hermès, Royal Exchange, EC3V 3LL



Labour and Wait, Redchurch Street, E2 7DJ



Spitalfields, E1 6BG

REDCHURCH STREET AND SPITALFIELDS HAVE BECOME THE AREA'S MOST SOUGHT-AFTER DESTINATIONS FOR DESIGN AND FASHION – BYWORDS FOR ALL THINGS BESPOKE, BOUTIQUE AND INDEPENDENT. BROWSE EVERYTHING FROM SKIN, HAIR AND BODY CARE ESSENTIALS TO NEW CLOTHING AND EYEWEAR LABELS.



Aesop, Redchurch Street, E2 7DP



Ollie Quinn, Spitalfields, E1 6AA



Rapha, Spitalfields, E1 6AA



30 St Mary Axe (The Gherkin), EC3A 8BF

A LANDMARK DESTINATION



The Royal Exchange, EC3V 3LR

FROM THE 450-YEAR-OLD TRADING CENTRE OF THE ROYAL EXCHANGE TO MORE RECENT SHOPPING AND FOODIE DESTINATIONS LIKE BROADGATE, THE CITY IS A KALEIDOSCOPE OF MANY DIFFERENT WORLDS SCATTERED ACROSS ANCIENT STREETS – ALL KNITTED TOGETHER BENEATH TOWERING ARCHITECTURAL ICONS AND HISTORIC MONUMENTS. A PLACE SHOWERED WITH INTERNATIONAL ACCLAIM, BUT WHERE LOCAL KNOWLEDGE STILL REIGNS.

ONE CROWN PLACE

THE PLACE



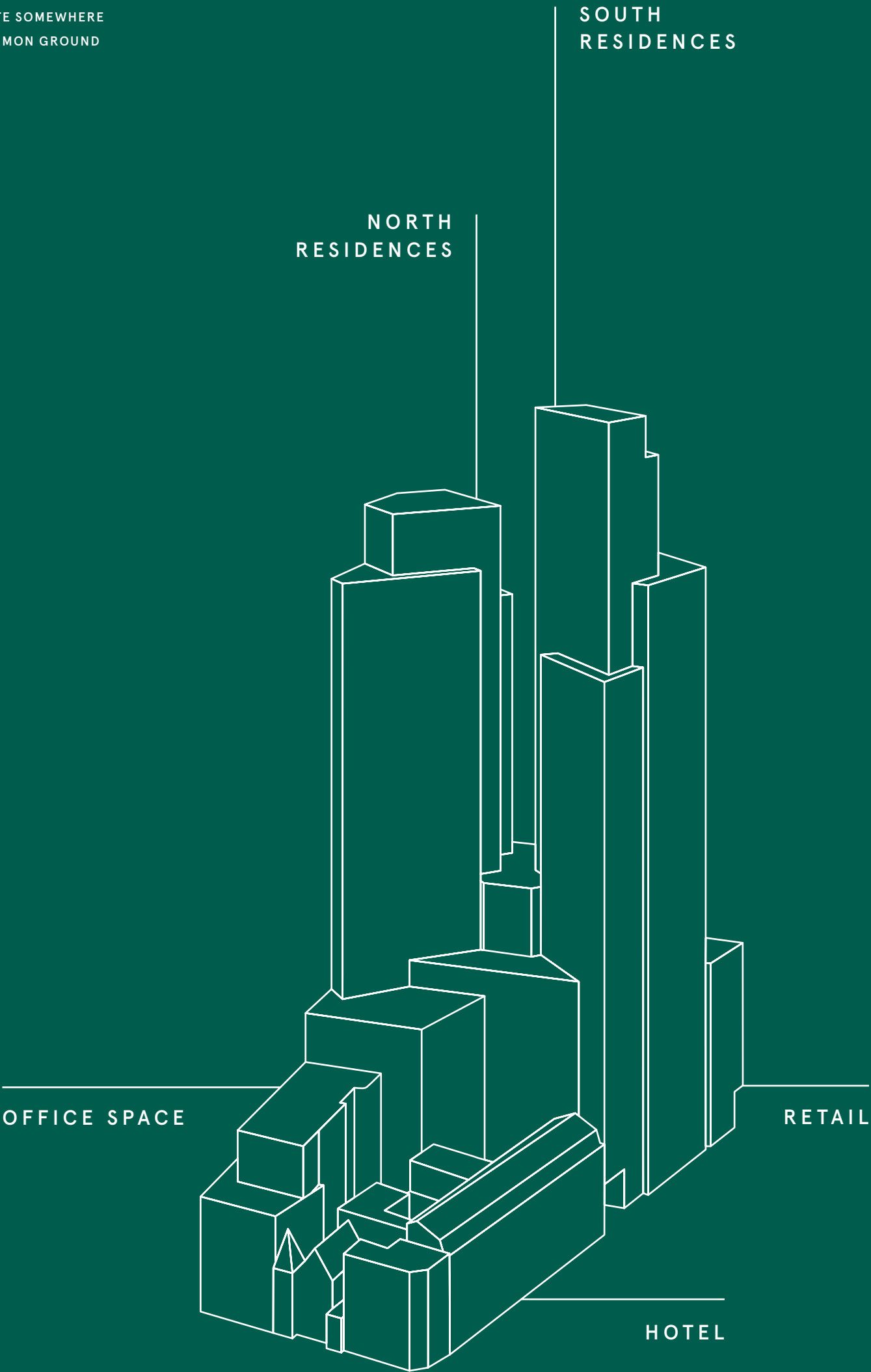
Broadgate Circle, EC2M 2QS

ONE CROWN PLACE

FLOORPLANS

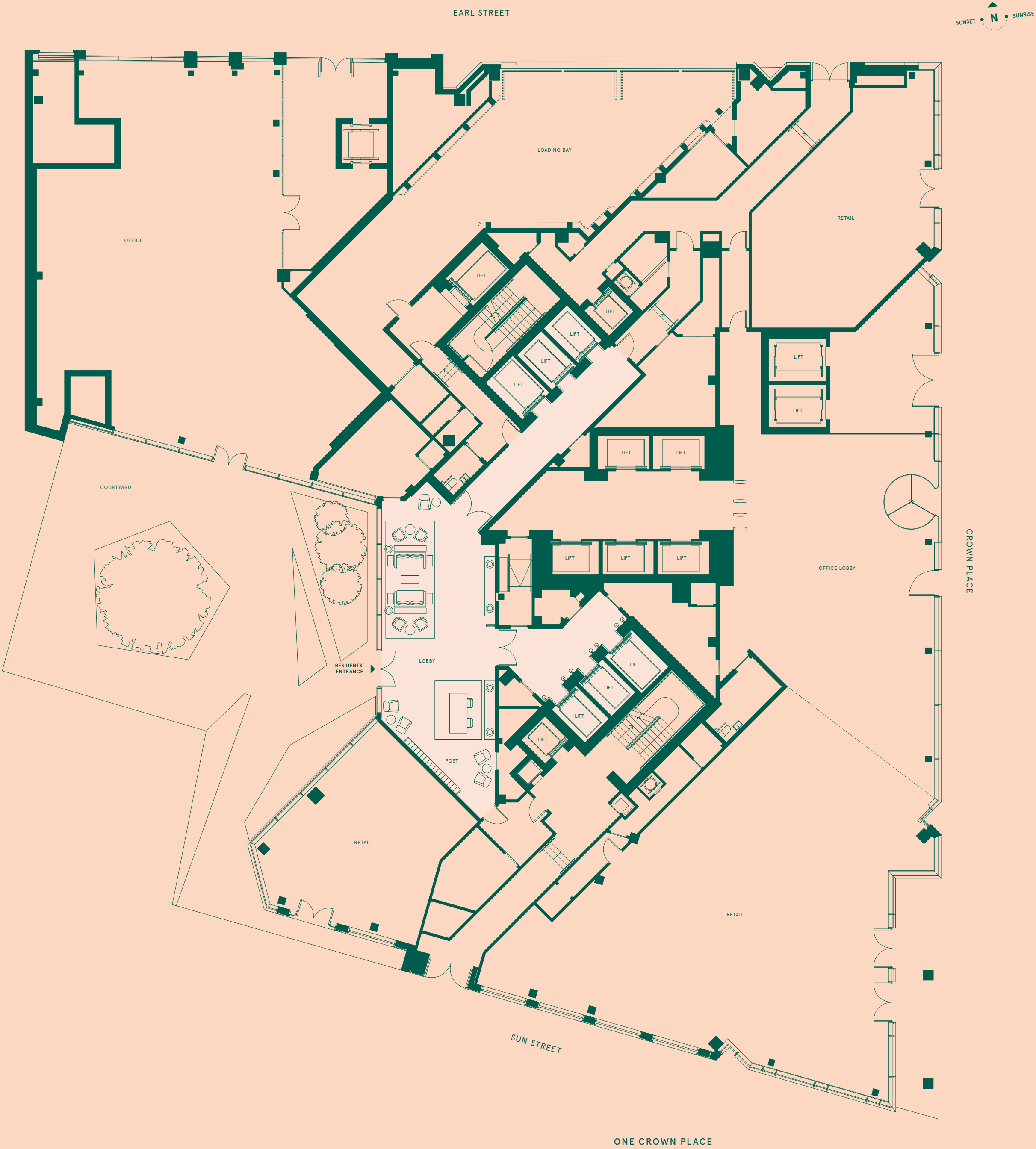
ONE CROWN PLACE IS A TRUE MIXED-USE DEVELOPMENT. ITS GREAT 'NORTH' AND 'SOUTH' TOWERS HOLD 246 RESIDENCES, WHILE 10,650SQM OF QUALITY OFFICE SPACE IS HOUSED WITHIN A 6-FLOOR BUILDING AT ITS CORE. A VARIETY OF RETAIL UNITS THEN BOOKEND THE BOUTIQUE HOTEL AND MEMBERS' CLUB IN THE PERIOD BUILDINGS ON SUN STREET.

OUR VISION WAS TO FOUND A NEW, COMPLETE DESTINATION EMBRACING BOTH CITY SOPHISTICATION AND SHOREDITCH INDIVIDUALITY. IN DOING SO WE'VE SIDESTEPED CONVENTION TO CREATE SOMEWHERE TRULY ICONIC AND CARVED OUT COMMON GROUND BETWEEN TWO GREAT NEIGHBOURS.



GROUND

A LANDSCAPED COURTYARD MAKES FOR A PEACEFUL ARRIVAL MOMENT, GIVING THE RESIDENTS' ENTRANCE BREATHING SPACE FROM THE STREETS BEYOND. THE LOBBY IS THE HEART OF THE BUILDING, WHERE YOU'LL FIND YOUR CONCIERGE – ON HAND DAY AND NIGHT – AND AN ARRANGEMENT OF COMFORTABLE SEATING. THE PERFECT 'WELCOME HOME' AT THE END OF A LONG DAY.



Any areas, dimensions, measurements or distances are approximate. All floorplans are for approximate measurements only and intended to give a general indication of the proposed floor layout. All measurements are within a reasonable tolerance in accordance with the sales contract and are provided as Gross Internal Areas according to the Royal Institution of Chartered Surveyors Code of Measuring Practice. Kitchen and bathroom layouts are indicative only and subject to change. Furniture is shown for illustrative purposes only.

FLOOR 7

KEY

- 1 BEDROOM APARTMENT
- 2 BEDROOM APARTMENT
- 3 BEDROOM APARTMENT

- C – CUPBOARD
- E – ELECTRICAL
- ES – EN-SUITE
- FF – FRIDGE/FREEZER
- SC – SERVICE CUPBOARD
- WD – WASHER/DRYER
- ET – EXPOSED TRUSS

NORTH

N701

2 BEDROOM APARTMENT		
Total internal area	114sqm	1227sqft
Terraces	90sqm	966sqft
Kitchen / Living	9.27m × 7.07m	30'5" × 23'2"
Bedroom 1	4.23m × 3.38m	13'11" × 11'1"
Bedroom 2	4.63m × 2.96m	15'3" × 9'9"

SOUTH

S701

1 BEDROOM APARTMENT		
Total internal area	63sqm	683sqft
Terraces	58sqm	623sqft
Kitchen / Living	8.70m × 3.74m	28'6" × 12'3"
Bedroom	3.61m × 2.75m	11'10" × 9'4"

S702

1 BEDROOM APARTMENT		
Total internal area	45sqm	486sqft
Terrace	65sqm	698sqft
Living room	4.75m × 2.60m	15'7" × 8'6"
Kitchen	4.33m × 2.89m	14'2" × 9'6"
Bedroom	3.60m × 2.73m	11'10" × 9'0"

S703

1 BEDROOM APARTMENT		
Total internal area	56sqm	605sqft
Kitchen / Living	4.60m × 3.67m	15'1" × 12'0"
Winter garden	3.46m × 2.10m	11'4" × 6'11"
Bedroom	3.66m × 2.86m	12'0" × 9'1"

S704

1 BEDROOM APARTMENT		
Total internal area	54sqm	585sqft
Kitchen / Living	6.36m × 2.80m	20'10" × 9'2"
Winter garden	2.33m × 2.31m	7'8" × 7'7"
Bedroom	5.57m × 2.89m	18'3" × 9'6"

Any areas, dimensions, measurements or distances are approximate. All floorplans are for approximate measurements only and intended to give a general indication of the proposed floor layout. All measurements are within a reasonable tolerance in accordance with the sales contract and are provided as Gross Internal Areas according to the Royal Institution of Chartered Surveyors Code of Measuring Practice. Kitchen and bathroom layouts are indicative only and subject to change. Furniture is shown for illustrative purposes only.



N701

S701

S704

S703

S702

FLOOR 8

KEY

1 BEDROOM APARTMENT

2 BEDROOM APARTMENT

3 BEDROOM APARTMENT

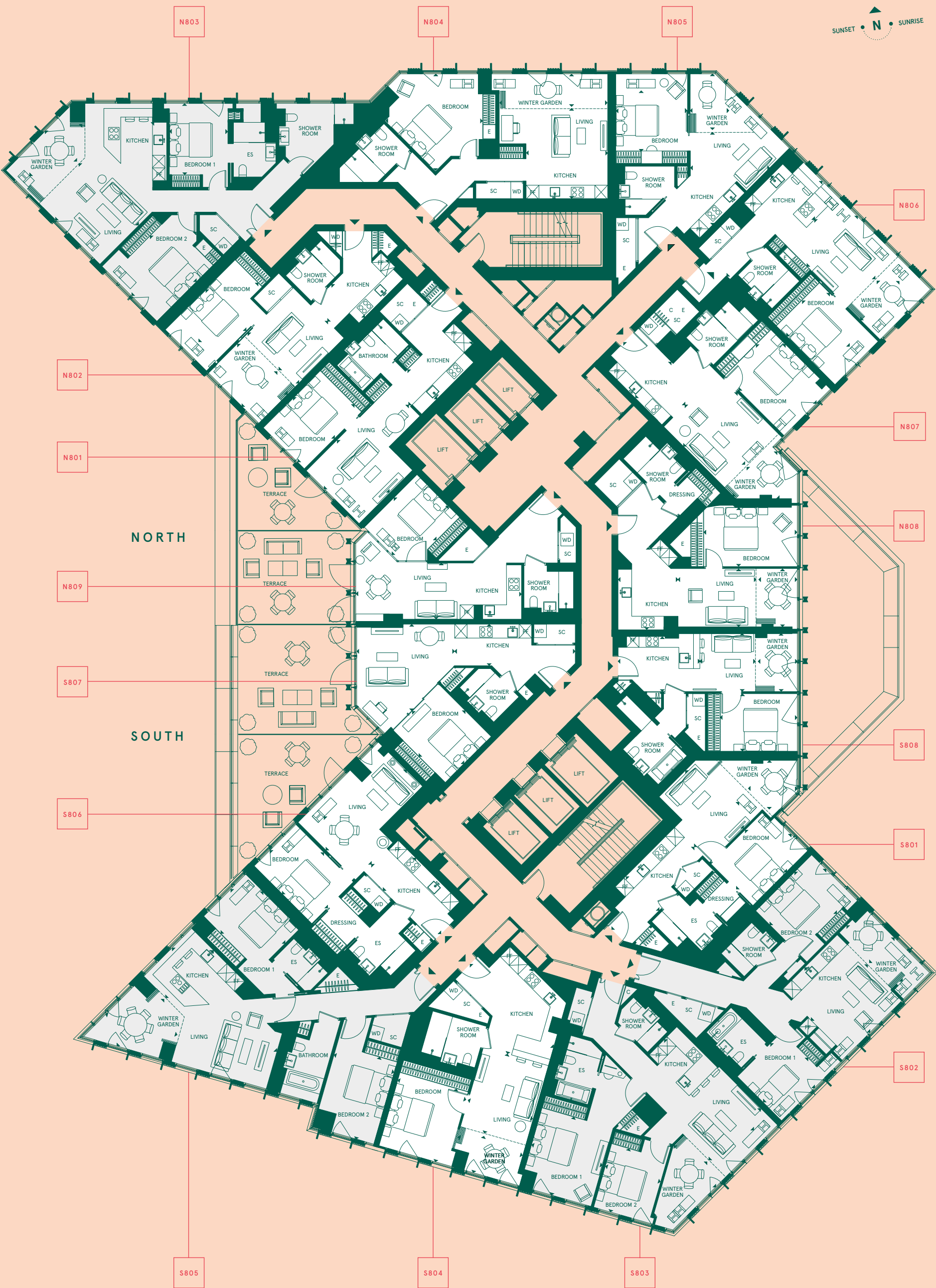
C – CUPBOARD
E – ELECTRICAL
ES – EN-SUITE
FF – FRIDGE/FREEZER
SC – SERVICE CUPBOARD
WD – WASHER/DRYER
E – EXPOSED TRUSS

NORTH			
N801	1 BEDROOM APARTMENT		
	Total internal area	54sqm	583sqft
	Terrace	20sqm	213sqft
	Living room	5.63m x 3.53m	18'5" x 11'7"
	Kitchen	4.30m x 1.98m	13'11" x 6'6"
	Bedroom	2.75m x 3.82m	9'0" x 12'6"
N802	1 BEDROOM APARTMENT		
	Total internal area	54sqm	582sqft
	Living room	3.28m x 3.38m	10'9" x 11'1"
	Kitchen	4.09m x 2.21m	13'4" x 7'2"
	Winter garden	1.60m x 3.38m	5'2" x 11'1"
	Bedroom	2.75m x 3.98m	9'0" x 13'0"
N803	2 BEDROOM APARTMENT		
	Total internal area	96sqm	1036sqft
	Kitchen / Living	6.51m x 4.08m	21'4" x 13'4"
	Winter garden	3.35m x 2.12m	11'0" x 6'11"
	Bedroom 1	3.38m x 2.78m	11'0" x 9'1"
	Bedroom 2	4.33m x 3.09m	14'2" x 10'1"
N804	1 BEDROOM APARTMENT		
	Total internal area	70sqm	750sqft
	Kitchen / Living	4.26m x 3.92m	13'11" x 12'10"
	Winter garden	1.55m x 5.19m	5'0" x 17'0"
	Bedroom	4.63m x 4.64m	15'2" x 15'2"
N805	1 BEDROOM APARTMENT		
	Total internal area	52sqm	562sqft
	Kitchen / Living	4.38m x 3.77m	14'4" x 12'4"
	Winter garden	2.66m x 1.83m	8'8" x 6'0"
	Bedroom	3.42m x 2.85m	11'2" x 9'4"
N806	1 BEDROOM APARTMENT		
	Total internal area	59sqm	638sqft
	Living room	4.03m x 3.37m	13'2" x 11'0"
	Kitchen	6.38m x 2.93m	20'11" x 9'7"
	Winter garden	2.05m x 2.61m	6'8" x 8'6"
	Bedroom	3.13m x 2.89m	10'3" x 9'5"
N807	1 BEDROOM APARTMENT		
	Total internal area	61sqm	658sqft
	Living room	4.00m x 3.59m	13'1" x 11'9"
	Kitchen	2.43m x 4.15m	7'11" x 13'7"
	Winter garden	2.97m x 2.15m	9'8" x 7'0"
	Bedroom	3.13m x 4.01m	10'3" x 13'1"
N808	1 BEDROOM APARTMENT		
	Total internal area	62sqm	671sqft
	Living room	3.69m x 2.76m	12'1" x 9'0"
	Kitchen	3.93m x 2.84m	12'10" x 9'3"
	Winter garden	1.83m x 2.76m	5'11" x 9'0"
	Bedroom	2.79m x 4.44m	9'1" x 14'6"
N809	1 BEDROOM APARTMENT		
	Total internal area	54sqm	576sqft
	Terrace	21sqm	221sqft
	Kitchen / Living	2.69m x 7.87m	9'0" x 25'10"
	Bedroom	2.96m x 2.94m	9'8" x 9'8"

SOUTH			
S801	1 BEDROOM APARTMENT		
	Total internal area	55sqm	596sqft
	Living room	3.91m x 2.99m	12'10" x 9'10"
	Kitchen	5.54m x 2.27m	18'2" x 7'5"
	Winter garden	2.34m x 2.33m	7'8" x 7'8"
	Bedroom	3.70m x 2.82m	12'1" x 9'8"
S802	2 BEDROOM APARTMENT		
	Total internal area	84sqm	902sqft
	Kitchen / Living	4.41m x 3.76m	14'6" x 12'4"
	Winter garden	1.70m x 3.78m	5'7" x 12'5"
	Bedroom 1	3.00m x 3.02m	9'10" x 9'8"
	Bedroom 2	3.75m x 2.83m	12'4" x 9'2"
S803	2 BEDROOM APARTMENT		
	Total internal area	88sqm	943sqft
	Kitchen / Living	6.07m x 3.51m	19'11" x 11'6"
	Winter garden	3.61m x 2.81m	11'10" x 9'2"
	Bedroom 1	3.87m x 3.53m	12'9" x 11'7"
	Bedroom 2	3.15m x 2.78m	10'5" x 9'1"
S804	1 BEDROOM APARTMENT		
	Total internal area	63sqm	683sqft
	Living room	3.95m x 3.22m	12'11" x 10'7"
	Kitchen	5.61m x 4.23m	18'5" x 13'10"
	Winter garden	3.22m x 1.81m	10'7" x 5'11"
	Bedroom	3.63m x 3.38m	13'0" x 10'4"
S805	2 BEDROOM APARTMENT		
	Total internal area	99sqm	1062sqft
	Kitchen / Living	7.03m x 3.23m	23'1" x 10'7"
	Winter garden	3.50m x 3.12m	11'6" x 10'3"
	Bedroom 1	3.65m x 2.83m	12'1" x 9'5"
	Bedroom 2	4.06m x 3.00m	13'3" x 9'8"
S806	1 BEDROOM APARTMENT		
	Total internal area	57sqm	618sqft
	Terrace	30sqm	322sqft
	Living room	5.41m x 3.21m	17'9" x 10'6"
	Kitchen	4.68m x 2.21m	15'4" x 7'3"
	Bedroom	3.89m x 2.83m	12'9" x 9'1"
S807	1 BEDROOM APARTMENT		
	Total internal area	54sqm	577sqft
	Terrace	21sqm	221sqft
	Living room	4.64m x 4.13m	15'3" x 13'7"
	Kitchen	5.78m x 1.99m	19'0" x 6'6"
	Bedroom	3.52m x 3.10m	10'0" x 10'2"
S808	1 BEDROOM APARTMENT		
	Total internal area	52sqm	556sqft
	Living room	2.77m x 2.65m	9'1" x 8'8"
	Kitchen	3.89m x 2.77m	12'9" x 9'1"
	Winter garden	2.77m x 1.87m	9'1" x 6'2"
	Bedroom	3.68m x 2.75m	9'2" x 9'0"

Any areas, dimensions, measurements or distances are approximate. All floorplans are for approximate measurements only and intended to give a general indication of the proposed floor layout. All measurements are within a reasonable tolerance in accordance with the sales contract and are provided as Gross Internal Areas according to the Royal Institution of Chartered Surveyors Code of Measuring Practice. Kitchen and bathroom layouts are indicative only and subject to change. Furniture is shown for illustrative purposes only.

FLOORPLANS & SPECIFICATION

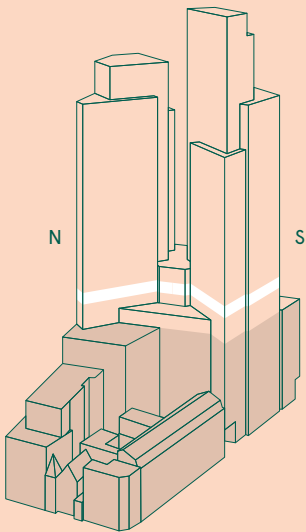


FLOOR 9

KEY

- 1 BEDROOM APARTMENT
- 2 BEDROOM APARTMENT
- 3 BEDROOM APARTMENT

- C – CUPBOARD
- E – ELECTRICAL
- ES – EN-SUITE
- FF – FRIDGE/FREEZER
- SC – SERVICE CUPBOARD
- WD – WASHER/DRYER



NORTH

N901

1 BEDROOM APARTMENT		
Total internal area	55sqm	589sqft
Living room	4.33m x 2.75m	14'2" x 9'0"
Kitchen	4.03m x 2.75m	13'2" x 9'0"
Winter garden	2.75m x 2.12m	9'0" x 6'11"
Bedroom	4.21m x 2.97m	13'9" x 9'8"

N902

1 BEDROOM APARTMENT		
Total internal area	56sqm	601sqft
Living room	3.88m x 3.67m	12'8" x 12'0"
Kitchen	4.09m x 2.70m	13'4" x 8'10"
Winter garden	3.67m x 1.70m	12'0" x 5'7"
Bedroom	3.27m x 3.21m	10'8" x 10'6"

N903

2 BEDROOM APARTMENT		
Total internal area	96sqm	1034sqft
Kitchen / Living	6.51m x 3.72m	21'4" x 12'2"
Winter garden	4.11m x 2.14m	13'5" x 7'0"
Bedroom 1	3.33m x 3.05m	10'10" x 9'11"
Bedroom 2	5.40m x 2.86m	17'8" x 9'4"

N904

1 BEDROOM APARTMENT		
Total internal area	79sqm	854sqft
Kitchen / Living	5.85m x 5.74m	19'2" x 18'9"
Winter garden	5.02m x 1.91m	16'5" x 6'3"
Bedroom	3.29m x 3.10m	10'9" x 10'2"

N905

1 BEDROOM APARTMENT		
Total internal area	50sqm	542sqft
Kitchen / Living	4.72m x 4.18m	15'5" x 13'8"
Winter garden	2.36m x 2.31m	7'8" x 7'7"
Bedroom	3.45m x 2.80m	11'3" x 9'2"

N906

1 BEDROOM APARTMENT		
Total internal area	61sqm	652sqft
Living room	3.37m x 3.93m	11'0" x 12'10"
Kitchen	6.38m x 3.46m	20'11" x 11'4"
Winter garden	3.37m x 1.62m	11'2" x 5'3"
Bedroom	3.92m x 2.89m	12'10" x 9'5"

N907

1 BEDROOM APARTMENT		
Total internal area	61sqm	658sqft
Living room	4.00m x 3.36m	13'1" x 11'0"
Kitchen	4.00m x 2.43m	13'1" x 7'11"
Winter garden	2.29m x 2.62m	7'6" x 8'7"
Bedroom	4.01m x 3.36m	13'1" x 11'0"

N908

1 BEDROOM APARTMENT		
Total internal area	68sqm	734sqft
Living room	3.61m x 2.76m	11'10" x 9'0"
Kitchen	3.18m x 4.64m	10'5" x 15'2"
Winter garden	2.76m x 1.91m	9'0" x 6'3"
Bedroom	5.04m x 2.79m	16'6" x 9'1"

N909

1 BEDROOM APARTMENT		
Total internal area	53sqm	574sqft
Kitchen / Living	6.05m x 2.58m	19'10" x 8'5"
Winter garden	3.85m x 1.68m	12'7" x 5'6"
Bedroom	3.57m x 3.02m	11'8" x 9'10"

SOUTH

S901

1 BEDROOM APARTMENT		
Total internal area	59sqm	638sqft
Living room	3.85m x 4.49m	12'8" x 14'9"
Kitchen	5.27m x 2.31m	17'9" x 7'7"
Winter garden	2.61m x 2.25m	8'7" x 7'4"
Bedroom	3.91m x 2.90m	12'9" x 9'0"

S902

2 BEDROOM APARTMENT		
Total internal area	80sqm	863sqft
Kitchen / Living	4.60m x 3.76m	15'0" x 12'6"
Winter garden	3.92m x 1.68m	12'10" x 5'6"
Bedroom 1	3.00m x 2.83m	9'10" x 9'3"
Bedroom 2	2.93m x 2.88m	9'7" x 9'5"

S903

2 BEDROOM APARTMENT		
Total internal area	88sqm	951sqft
Kitchen / Living	3.58m x 6.70m	11'9" x 22'0"
Winter garden	3.14m x 2.81m	10'3" x 9'2"
Bedroom 1	3.86m x 3.51m	12'8" x 12'9"
Bedroom 2	3.19m x 2.85m	10'6" x 9'4"

S904

1 BEDROOM APARTMENT		
Total internal area	63sqm	683sqft
Living room	3.95m x 3.22m	12'11" x 10'7"
Kitchen	5.61m x 4.23m	18'5" x 13'10"
Winter garden	3.22m x 1.81m	10'7" x 5'11"
Bedroom	3.63m x 3.38m	13'0" x 10'4"

S905

2 BEDROOM APARTMENT		
Total internal area	99sqm	1062sqft
Kitchen / Living	7.03m x 3.23m	23'1" x 10'7"
Winter garden	3.56m x 3.12m	11'8" x 10'3"
Bedroom 1	3.44m x 3.00m	11'3" x 9'5"
Bedroom 2	4.06m x 3.00m	13'4" x 9'10"

S906

1 BEDROOM APARTMENT		
Total internal area	57sqm	616sqft
Living room	3.89m x 3.31m	12'9" x 10'10"
Kitchen	4.68m x 2.21m	15'4" x 7'3"
Winter garden	3.00m x 1.97m	9'10" x 6'6"
Bedroom	3.89m x 2.82m	12'9" x 9'1"

S907

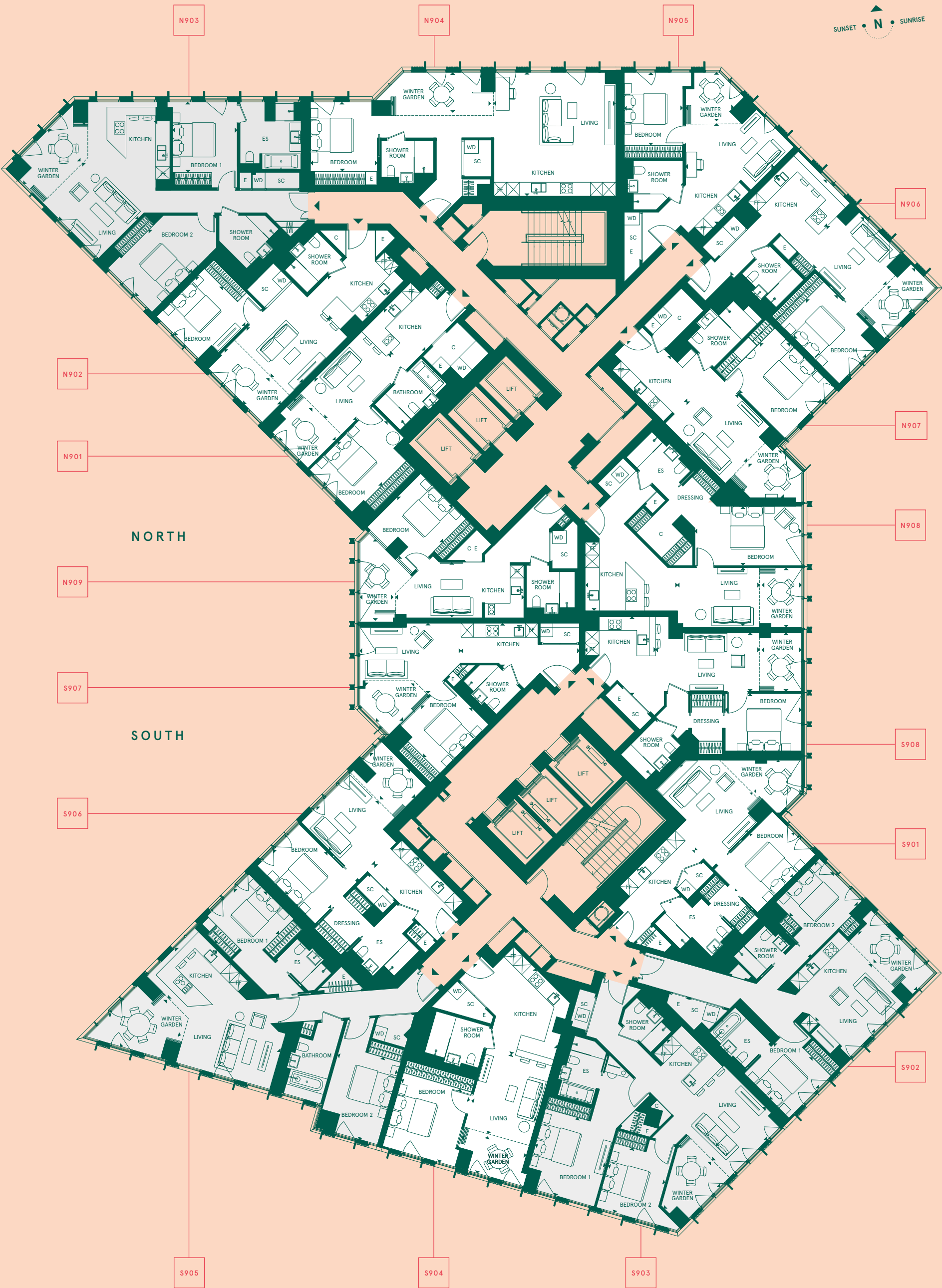
1 BEDROOM APARTMENT		
Total internal area	50sqm	536sqft
Living room	4.79m x 3.43m	15'9" x 11'3"
Kitchen	5.65m x 2.09m	18'6" x 6'10"
Winter garden	2.54m x 2.55m	8'4" x 8'4"
Bedroom	3.28m x 2.92m	10'0" x 9'7"

S908

1 BEDROOM APARTMENT		
Total internal area	58sqm	621sqft
Living room	4.92m x 2.81m	16'2" x 9'2"
Kitchen	3.36m x 3.74m	11'0" x 12'3"
Winter garden	1.87m x 2.81m	6'2" x 9'2"
Bedroom	3.63m x 2.75m	9'1" x 9'0"

Any areas, dimensions, measurements or distances are approximate. All floorplans are for approximate measurements only and intended to give a general indication of the proposed floor layout. All measurements are within a reasonable tolerance in accordance with the sales contract and are provided as Gross Internal Areas according to the Royal Institution of Chartered Surveyors Code of Measuring Practice. Kitchen and bathroom layouts are indicative only and subject to change. Furniture is shown for illustrative purposes only.

FLOORPLANS & SPECIFICATION



FLOOR 10

KEY

- 1 BEDROOM APARTMENT
- 2 BEDROOM APARTMENT
- 3 BEDROOM APARTMENT

- C – CUPBOARD
- E – ELECTRICAL
- ES – EN-SUITE
- FF – FRIDGE/FREEZER
- SC – SERVICE CUPBOARD
- WD – WASHER/DRYER

NORTH

N1001

1 BEDROOM APARTMENT		
Total internal area	55sqm	589sqft
Living room	2.75m x 2.75m	9'0" x 9'0"
Kitchen	4.03m x 2.75m	13'2" x 9'0"
Winter garden	2.75m x 2.12m	9'0" x 6'11"
Bedroom	4.21m x 2.97m	13'9" x 9'8"

N1002

1 BEDROOM APARTMENT		
Total internal area	56sqm	601sqft
Living room	3.88m x 3.67m	12'8" x 12'0"
Kitchen	4.09m x 2.70m	13'4" x 8'10"
Winter garden	1.70m x 3.67m	5'7" x 12'0"
Bedroom	3.21m x 3.27m	10'6" x 10'8"

N1003

2 BEDROOM APARTMENT		
Total internal area	96sqm	1034sqft
Kitchen / Living	6.51m x 3.72m	21'4" x 12'2"
Winter garden	4.11m x 2.14m	13'5" x 7'0"
Bedroom 1	3.33m x 3.05m	10'10" x 9'11"
Bedroom 2	5.40m x 2.86m	17'8" x 9'4"

N1004

1 BEDROOM APARTMENT		
Total internal area	79sqm	854sqft
Kitchen / Living	5.85m x 5.74m	19'2" x 18'9"
Winter garden	5.02m x 1.91m	16'5" x 6'3"
Bedroom	3.29m x 3.10m	10'9" x 10'2"

N1005

1 BEDROOM APARTMENT		
Total internal area	50sqm	542sqft
Kitchen / Living	4.72m x 4.18m	15'5" x 13'8"
Winter garden	2.31m x 2.36m	7'7" x 7'8"
Bedroom	3.45m x 2.80m	11'3" x 9'2"

N1006

1 BEDROOM APARTMENT		
Total internal area	59sqm	631sqft
Living room	3.93m x 3.37m	12'10" x 11'0"
Kitchen	6.38m x 3.46m	20'11" x 11'4"
Winter garden	3.37m x 1.62m	11'0" x 5'3"
Bedroom	3.92m x 2.89m	12'10" x 9'5"

SOUTH

S1001

2 BEDROOM APARTMENT		
Total internal area	80sqm	863sqft
Kitchen / Living	4.60m x 3.76m	15'1" x 12'6"
Winter garden	3.92m x 1.68m	12'10" x 5'6"
Bedroom 1	3.00m x 2.83m	9'10" x 9'3"
Bedroom 2	2.93m x 2.88m	9'7" x 9'5"

S1002

2 BEDROOM APARTMENT		
Total internal area	88sqm	951sqft
Kitchen / Living	3.58m x 6.70m	11'9" x 22'0"
Winter garden	3.14m x 2.81m	10'3" x 9'2"
Bedroom 1	3.86m x 3.51m	12'9" x 11'6"
Bedroom 2	3.19m x 2.85m	10'6" x 9'4"

S1003

1 BEDROOM APARTMENT		
Total internal area	63sqm	683sqft
Living room	3.95m x 3.22m	12'11" x 10'7"
Kitchen	5.61m x 4.23m	18'5" x 13'10"
Winter garden	3.22m x 1.81m	10'7" x 5'11"
Bedroom	3.63m x 3.38m	13'0" x 10'4"

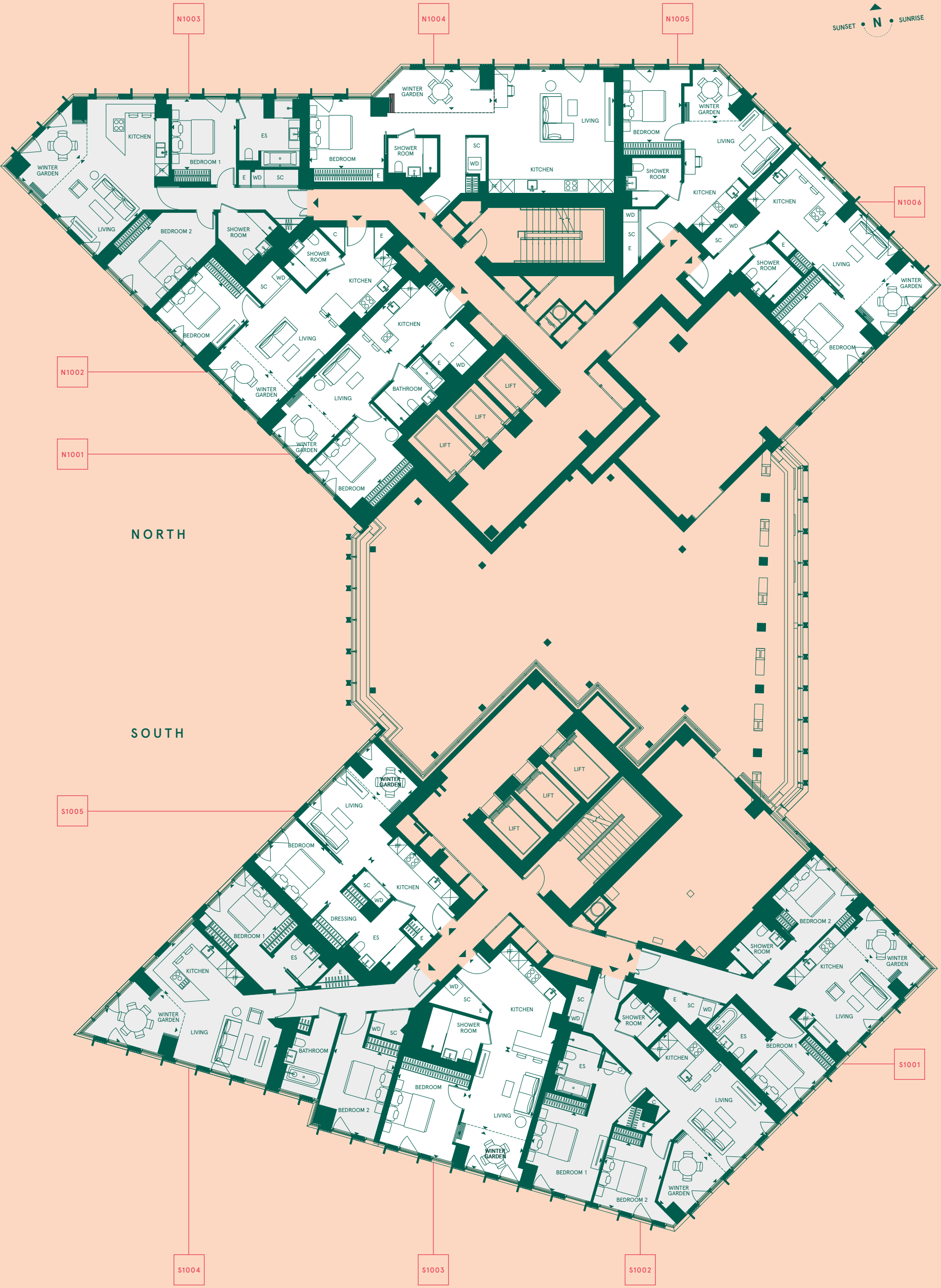
S1004

2 BEDROOM APARTMENT		
Total internal area	99sqm	1062sqft
Kitchen / Living	7.03m x 3.23m	23'1" x 10'7"
Winter garden	3.56m x 3.12m	11'8" x 10'3"
Bedroom 1	3.44m x 3.00m	11'3" x 9'5"
Bedroom 2	4.06m x 3.00m	13'4" x 9'10"

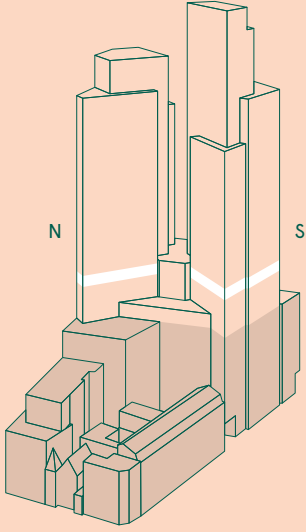
S1005

1 BEDROOM APARTMENT		
Total internal area	57sqm	616sqft
Living room	3.89m x 3.31m	12'9" x 10'10"
Kitchen	4.68m x 2.21m	15'4" x 7'3"
Winter garden	3.00m x 1.64m	9'10" x 5'4"
Bedroom	3.89m x 2.82m	12'9" x 9'1"

FLOORPLANS & SPECIFICATION



Any areas, dimensions, measurements or distances are approximate. All floorplans are for approximate measurements only and intended to give a general indication of the proposed floor layout. All measurements are within a reasonable tolerance in accordance with the sales contract and are provided as Gross Internal Areas according to the Royal Institution of Chartered Surveyors Code of Measuring Practice. Kitchen and bathroom layouts are indicative only and subject to change. Furniture is shown for illustrative purposes only.



FLOOR 11

KEY

- 1 BEDROOM APARTMENT
- 2 BEDROOM APARTMENT
- 3 BEDROOM APARTMENT

C

 – CUPBOARD

E

 – ELECTRICAL

ES

 – EN-SUITE

FF

 – FRIDGE/FREEZER

SC

 – SERVICE CUPBOARD

WD

 – WASHER/DRYER

NORTH

N1101

1 BEDROOM APARTMENT			
Total internal area	55sqm	589sqft	
Living room	4.33m × 2.75m	14'2" × 9'0"	
Kitchen	4.03m × 2.75m	13'2" × 9'0"	
Winter garden	2.12m × 2.75m	6'11" × 9'0"	
Bedroom	4.21m × 2.87m	13'9" × 9'4"	

N1102

1 BEDROOM APARTMENT			
Total internal area	56sqm	601sqft	
Living room	3.88m × 3.67m	12'8" × 12'0"	
Kitchen	4.09m × 2.70m	13'4" × 8'10"	
Winter garden	1.70m × 3.67m	5'7" × 12'0"	
Bedroom	3.21m × 3.27m	10'6" × 10'8"	

N1103

2 BEDROOM APARTMENT			
Total internal area	91sqm	976sqft	
Living room	4.36m × 3.73m	14'3" × 12'2"	
Kitchen	3.67m × 4.17m	12'0" × 13'8"	
Winter garden	4.06m × 2.14m	13'3" × 7'0"	
Bedroom 1	3.33m × 2.75m	10'10" × 9'0"	
Bedroom 2	5.40m × 2.85m	17'8" × 9'4"	

N1104

1 BEDROOM APARTMENT			
Total internal area	57sqm	609sqft	
Living room	3.07m × 3.27m	10'0" × 10'8"	
Kitchen	2.78m × 2.38m	9'1" × 7'9"	
Winter garden	3.21m × 1.94m	10'6" × 6'4"	
Bedroom	3.94m × 2.87m	12'10" × 9'4"	

N1105

1 BEDROOM APARTMENT			
Total internal area	57sqm	617sqft	
Kitchen / Living	3.75m × 4.10m	12'3" × 13'5"	
Winter garden	3.44m × 2.20m	11'3" × 7'2"	
Bedroom	3.11m × 3.03m	10'2" × 9'11"	

N1106

2 BEDROOM APARTMENT			
Total internal area	80sqm	859sqft	
Kitchen / Living	6.23m × 6.03m	19'3" × 20'4"	
Winter garden	2.18m × 3.40m	6'8" × 12'9"	
Bedroom 1	2.90m × 2.85m	9'6" × 9'4"	
Bedroom 2	3.00m × 2.85m	10'8" × 9'4"	

N1107

2 BEDROOM APARTMENT			
Total internal area	79sqm	849sqft	
Living room	3.90m × 3.36m	12'9" × 11'0"	
Kitchen	2.70m × 3.46m	8'10" × 11'4"	
Winter garden	1.77m × 3.36m	5'9" × 11'0"	
Bedroom 1	3.85m × 3.64m	12'7" × 11'11"	
Bedroom 2	4.45m × 2.90m	14'7" × 9'6"	

SOUTH

S1101

1 BEDROOM APARTMENT			
Total internal area	56sqm	605sqft	
Living room	3.75m × 3.47m	12'4" × 12'2"	
Kitchen	5.42m × 2.31m	17'9" × 7'7"	
Winter garden	3.19m × 1.61m	10'5" × 5'3"	
Bedroom	3.75m × 2.88m	12'3" × 9'5"	

S1102

2 BEDROOM APARTMENT			
Total internal area	80sqm	863sqft	
Kitchen / Living	4.60m × 3.76m	15'1" × 12'4"	
Winter garden	3.92m × 1.68m	12'10" × 5'6"	
Bedroom 1	3.00m × 2.83m	9'10" × 9'3"	
Bedroom 2	2.93m × 2.88m	9'7" × 9'5"	

S1103

2 BEDROOM APARTMENT			
Total internal area	88sqm	951sqft	
Kitchen / Living	3.58m × 6.70m	11'9" × 22'0"	
Winter garden	3.14m × 2.81m	10'3" × 9'2"	
Bedroom 1	3.86m × 3.51m	12'9" × 11'6"	
Bedroom 2	3.19m × 2.85m	10'6" × 9'4"	

S1104

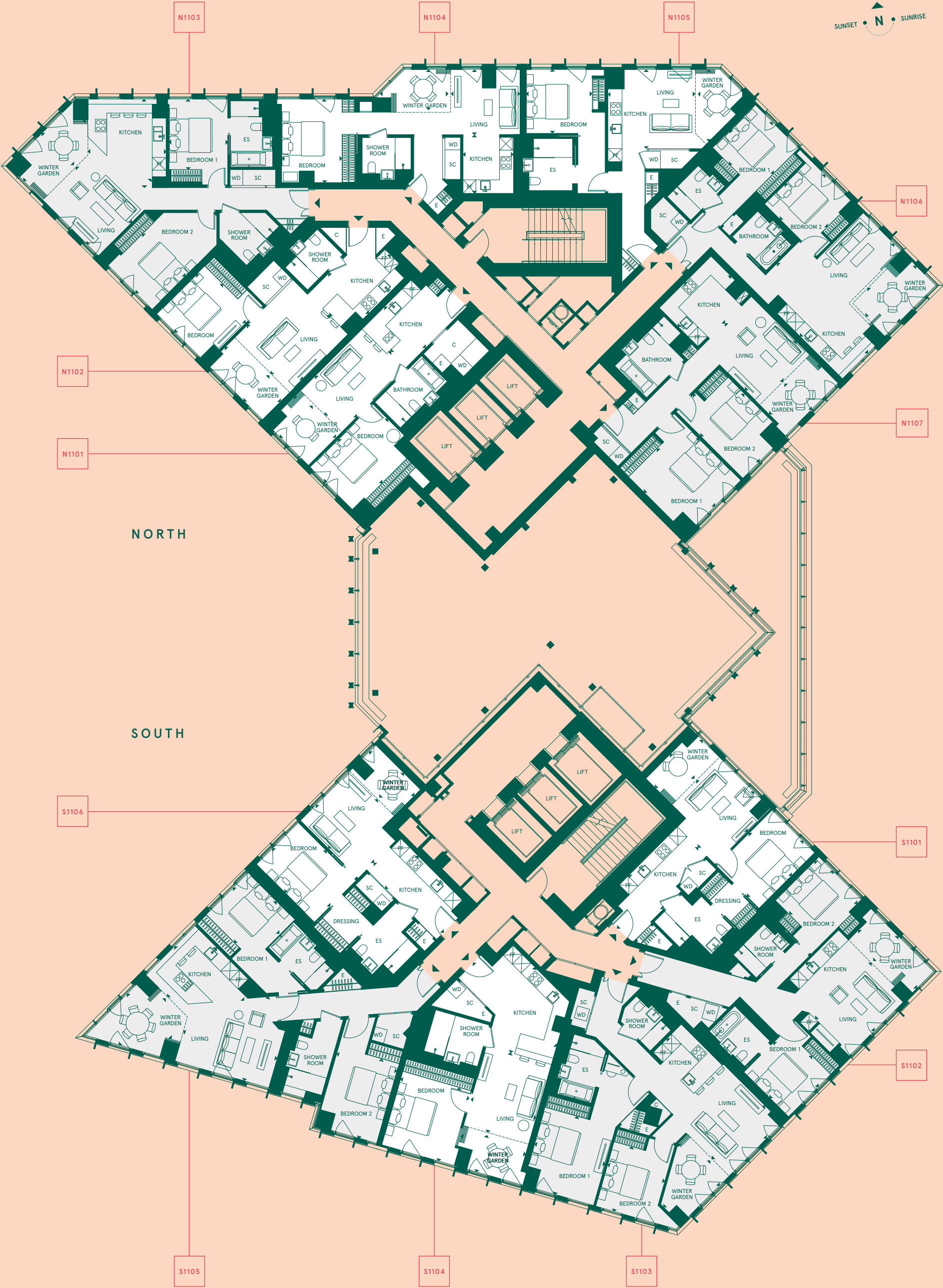
1 BEDROOM APARTMENT			
Total internal area	63sqm	683sqft	
Living room	3.95m × 3.22m	12'11" × 10'7"	
Kitchen	5.61m × 4.23m	18'5" × 13'10"	
Winter garden	3.22m × 1.81m	10'7" × 5'11"	
Bedroom	3.63m × 3.38m	13'0" × 10'4"	

S1105

2 BEDROOM APARTMENT			
Total internal area	99sqm	1062sqft	
Kitchen / Living	7.05m × 3.31m	23'1" × 10'10"	
Winter garden	3.56m × 3.12m	11'8" × 10'3"	
Bedroom 1	3.15m × 2.81m	10'4" × 9'5"	
Bedroom 2	3.92m × 3.00m	12'10" × 9'10"	

S1106

1 BEDROOM APARTMENT			
Total internal area	57sqm	616sqft	
Living room	3.89m × 3.31m	12'9" × 10'10"	
Kitchen	4.68m × 2.21m	15'4" × 7'3"	
Winter garden	3.00m × 1.64m	9'10" × 5'4"	
Bedroom	3.89m × 2.82m	12'9" × 9'1"	



Any areas, dimensions, measurements or distances are approximate. All floorplans are for approximate measurements only and intended to give a general indication of the proposed floor layout. All measurements are within a reasonable tolerance in accordance with the sales contract and are provided as Gross Internal Areas according to the Royal Institution of Chartered Surveyors Code of Measuring Practice. Kitchen and bathroom layouts are indicative only and subject to change. Furniture is shown for illustrative purposes only.

FLOOR 12-15

KEY

- 1 BEDROOM APARTMENT
- 2 BEDROOM APARTMENT
- 3 BEDROOM APARTMENT

- C – CUPBOARD
- E – ELECTRICAL
- ES – EN-SUITE
- FF – FRIDGE/FREEZER
- SC – SERVICE CUPBOARD
- WD – WASHER/DRYER

NORTH

N1201	N1301	N1401	N1501
1 BEDROOM APARTMENT			
Total internal area	55sqm	595sqft	
Living room	4.33m x 2.75m	14'2" x 9'0"	
Kitchen	4.02m x 2.75m	13'2" x 9'0"	
Winter garden	2.12m x 2.75m	6'11" x 9'0"	
Bedroom	4.21m x 2.87m	13'9" x 9'4"	

N1202	N1302	N1402	N1502
1 BEDROOM APARTMENT			
Total internal area	56sqm	601sqft	
Living room	3.88m x 3.67m	12'8" x 12'0"	
Kitchen	4.09m x 2.70m	13'4" x 8'10"	
Winter garden	3.67m x 1.70m	12'0" x 5'7"	
Bedroom	3.21m x 3.27m	10'6" x 10'8"	

N1203	N1303	N1403	N1503
2 BEDROOM APARTMENT			
Total internal area	91sqm	976sqft	
Living room	4.36m x 3.73m	14'3" x 12'2"	
Kitchen	4.17m x 3.67m	13'8" x 12'0"	
Winter garden	4.06m x 2.14m	13'3" x 7'0"	
Bedroom 1	3.33m x 2.75m	10'10" x 9'0"	
Bedroom 2	5.40m x 2.85m	17'8" x 9'4"	

N1204	N1304	N1404	N1504
1 BEDROOM APARTMENT			
Total internal area	57sqm	609sqft	
Living room	3.07m x 3.25m	10'0" x 10'8"	
Kitchen	2.78m x 2.38m	9'1" x 7'9"	
Winter garden	1.94m x 3.23m	6'4" x 10'7"	
Bedroom	3.94m x 2.87m	12'10" x 9'4"	

N1205	N1305	N1405	N1505
1 BEDROOM APARTMENT			
Total internal area	57sqm	617sqft	
Kitchen / Living	3.75m x 4.11m	12'3" x 13'5"	
Winter garden	3.44m x 2.20m	11'3" x 7'2"	
Bedroom	3.03m x 3.11m	9'11" x 10'2"	

N1206	N1306	N1406	N1506
2 BEDROOM APARTMENT			
Total internal area	80sqm	859sqft	
Kitchen / Living	6.23m x 6.03m	20'5" x 19'9"	
Winter garden	2.18m x 3.40m	7'2" x 11'2"	
Bedroom 1	2.91m x 2.85m	9'6" x 9'4"	
Bedroom 2	3.00m x 2.85m	9'10" x 9'4"	

N1207	N1307	N1407	N1507
2 BEDROOM APARTMENT			
Total internal area	81sqm	873sqft	
Living room	3.90m x 3.36m	12'9" x 11'0"	
Kitchen	2.70m x 3.46m	8'10" x 11'4"	
Winter garden	1.77m x 3.36m	5'9" x 11'0"	
Bedroom 1	3.85m x 3.69m	12'7" x 12'1"	
Bedroom 2	4.45m x 2.90m	14'7" x 9'6"	

SOUTH

S1201	S1301	S1401	S1501
1 BEDROOM APARTMENT			
Total internal area	57sqm	611sqft	
Living room	3.75m x 3.63m	12'4" x 11'11"	
Kitchen	5.42m x 2.31m	17'9" x 7'7"	
Winter garden	3.19m x 1.69m	10'5" x 5'7"	
Bedroom	3.75m x 2.97m	12'4" x 9'9"	

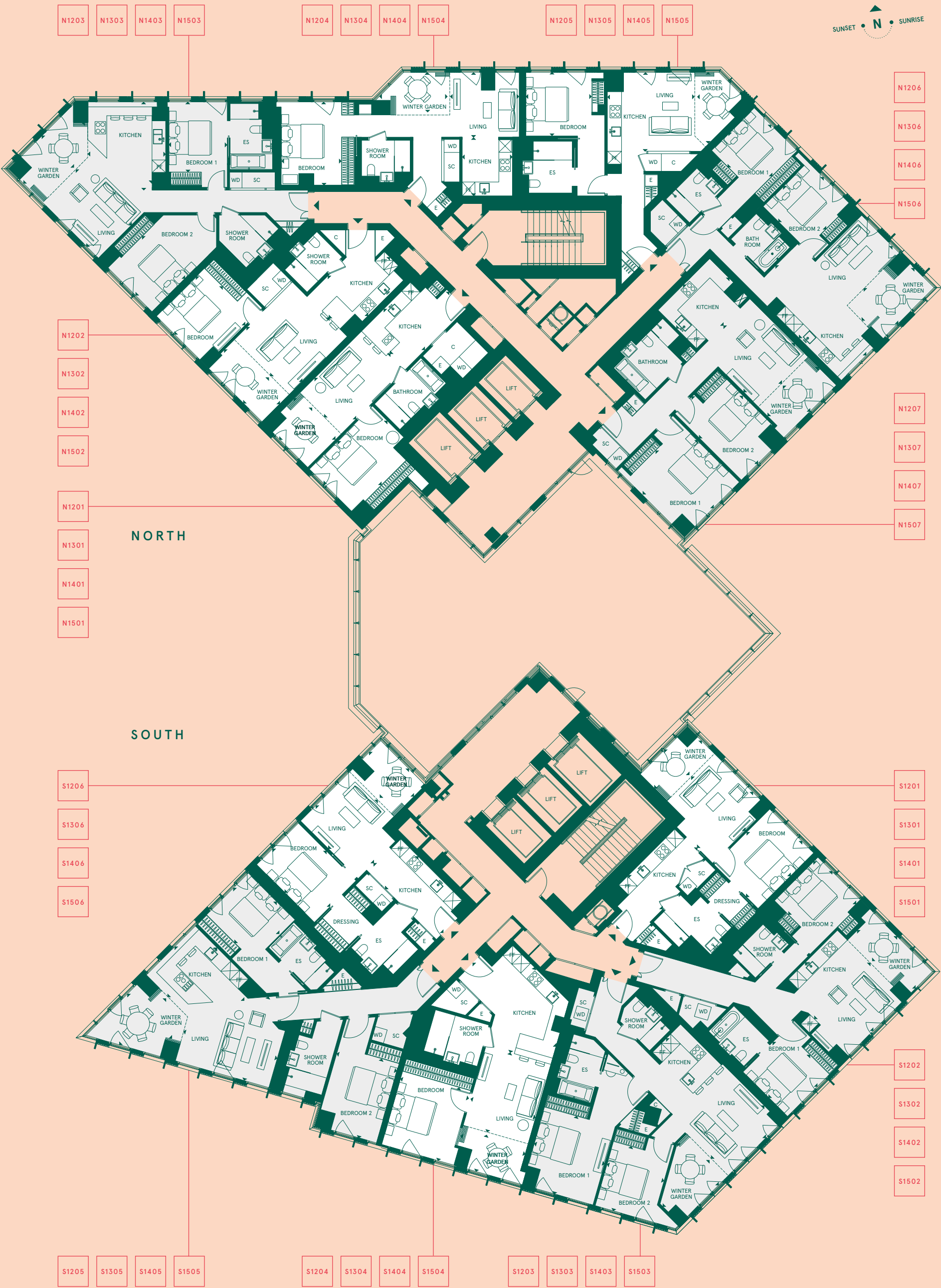
S1202	S1302	S1402	S1502
2 BEDROOM APARTMENT			
Total internal area	80sqm	863sqft	
Kitchen / Living	4.60m x 3.76m	15'1" x 12'4"	
Winter garden	3.92m x 1.68m	12'10" x 5'6"	
Bedroom 1	3.00m x 2.83m	9'10" x 9'3"	
Bedroom 2	2.93m x 2.88m	9'7" x 9'5"	

S1203	S1303	S1403	S1503
2 BEDROOM APARTMENT			
Total internal area	88sqm	951sqft	
Kitchen / Living	3.58m x 6.70m	11'9" x 22'0"	
Winter garden	3.14m x 2.81m	10'3" x 9'2"	
Bedroom 1	3.86m x 3.51m	12'8" x 11'6"	
Bedroom 2	3.19m x 2.85m	10'6" x 9'4"	

S1204	S1304	S1404	S1504
1 BEDROOM APARTMENT			
Total internal area	63sqm	683sqft	
Living room	3.95m x 3.22m	12'11" x 10'7"	
Kitchen	5.61m x 4.23m	18'5" x 13'10"	
Winter garden	1.79m x 3.35m	5'10" x 11'0"	
Bedroom	3.63m x 3.38m	11'11" x 11'1"	

S1205	S1305	S1405	S1505
2 BEDROOM APARTMENT			
Total internal area	99sqm	1062sqft	
Kitchen / Living	7.05m x 3.31m	23'1" x 10'10"	
Winter garden	3.56m x 3.12m	11'8" x 10'3"	
Bedroom 1	3.15m x 2.81m	10'4" x 9'3"	
Bedroom 2	3.92m x 3.00m	12'10" x 9'10"	

S1206	S1306	S1406	S1506
1 BEDROOM APARTMENT			
Total internal area	58sqm	621sqft	
Living room	3.89m x 3.31m	12'9" x 10'10"	
Kitchen	4.68m x 2.21m	15'4" x 7'3"	
Winter garden	3.00m x 1.97m	9'10" x 6'6"	
Bedroom 1	3.89m x 2.82m	12'9" x 9'3"	



Any areas, dimensions, measurements or distances are approximate. All floorplans are for approximate measurements only and intended to give a general indication of the proposed floor layout. All measurements are within a reasonable tolerance in accordance with the sales contract and are provided as Gross Internal Areas according to the Royal Institution of Chartered Surveyors Code of Measuring Practice. Kitchen and bathroom layouts are indicative only and subject to change. Furniture is shown for illustrative purposes only.

FLOOR 16-20

KEY

- 1 BEDROOM APARTMENT
- 2 BEDROOM APARTMENT
- 3 BEDROOM APARTMENT

- C – CUPBOARD
- E – ELECTRICAL
- ES – EN-SUITE
- FF – FRIDGE/FREEZER
- SC – SERVICE CUPBOARD
- WD – WASHER/DRYER

NORTH

N1601	N1701	N1801	N1901	N2001
-------	-------	-------	-------	-------

1 BEDROOM APARTMENT		
Total internal area	67sqm	722sqft
Living room	5.21m x 2.96m	17'0" x 9'8"
Kitchen	4.20m x 3.69m	13'9" x 12'1"
Winter garden	1.58m x 3.63m	5'2" x 11'10"
Bedroom	4.51m x 2.82m	14'9" x 9'3"

N1602	N1702	N1802	N1902	N2002
-------	-------	-------	-------	-------

3 BEDROOM APARTMENT		
Total internal area	141sqm	1515sqft
Living room	4.95m x 3.83m	16'2" x 12'6"
Kitchen	4.24m x 3.20m	13'10" x 10'6"
Winter garden	4.30m x 2.85m	14'1" x 9'4"
Bedroom 1	4.41m x 3.40m	14'5" x 11'1"
Bedroom 2	4.12m x 4.70m	13'6" x 15'5"
Bedroom 3	3.81m x 2.91m	12'6" x 9'6"

N1603	N1703	N1803	N1903	N2003
-------	-------	-------	-------	-------

1 BEDROOM APARTMENT		
Total internal area	58sqm	623sqft
Living room	3.07m x 3.25m	10'0" x 10'8"
Kitchen	2.78m x 2.38m	9'1" x 7'9"
Winter garden	1.94m x 3.23m	6'4" x 10'7"
Bedroom	3.94m x 3.12m	12'10" x 10'2"

N1604	N1704	N1804	N1904	N2004
-------	-------	-------	-------	-------

1 BEDROOM APARTMENT		
Total internal area	57sqm	613sqft
Kitchen / Living	3.65m x 4.13m	11'12" x 13'7"
Winter garden	2.20m x 3.44m	7'2" x 11'3"
Bedroom	3.24m x 3.72m	10'8" x 12'3"

N1605	N1705	N1805	N1905	N2005
-------	-------	-------	-------	-------

2 BEDROOM APARTMENT		
Total internal area	80sqm	859sqft
Kitchen / Living	6.03m x 6.23m	19'3" x 20'4"
Winter garden	2.18m x 3.40m	7'2" x 11'2"
Bedroom 1	2.90m x 2.85m	9'6" x 9'4"
Bedroom 2	3.00m x 2.85m	9'10" x 9'4"

N1606	N1706	N1806	N1906	N2006
-------	-------	-------	-------	-------

2 BEDROOM APARTMENT		
Total internal area	81sqm	873sqft
Living room	3.90m x 3.36m	12'9" x 11'0"
Kitchen	2.70m x 3.46m	8'10" x 11'4"
Winter garden	1.77m x 3.36m	5'9" x 11'0"
Bedroom 1	3.85m x 3.69m	12'7" x 12'1"
Bedroom 2	4.45m x 2.90m	14'7" x 9'6"

SOUTH

S1601	S1701	S1801	S1901	S2001
-------	-------	-------	-------	-------

1 BEDROOM APARTMENT		
Total internal area	57sqm	611sqft
Living room	3.75m x 3.63m	12'4" x 11'1"
Kitchen	5.42m x 2.31m	17'9" x 7'7"
Winter garden	3.19m x 1.69m	10'5" x 5'7"
Bedroom	3.75m x 2.97m	12'4" x 9'9"

S1602	S1702	S1802	S1902	S2002
-------	-------	-------	-------	-------

2 BEDROOM APARTMENT		
Total internal area	80sqm	863sqft
Kitchen / Living	4.60m x 3.76m	15'1" x 12'4"
Winter garden	3.92m x 1.68m	12'10" x 5'6"
Bedroom 1	3.00m x 2.83m	9'10" x 9'3"
Bedroom 2	2.93m x 2.88m	9'7" x 9'5"

S1603	S1703	S1803	S1903	S2003
-------	-------	-------	-------	-------

2 BEDROOM APARTMENT		
Total internal area	88sqm	951sqft
Kitchen / Living	6.70m x 3.58m	22'0" x 11'9"
Winter garden	3.14m x 2.80m	10'3" x 9'2"
Bedroom 1	3.86m x 3.51m	12'8" x 11'6"
Bedroom 2	3.19m x 2.85m	10'6" x 9'4"

S1604	S1704	S1804	S1904	S2004
-------	-------	-------	-------	-------

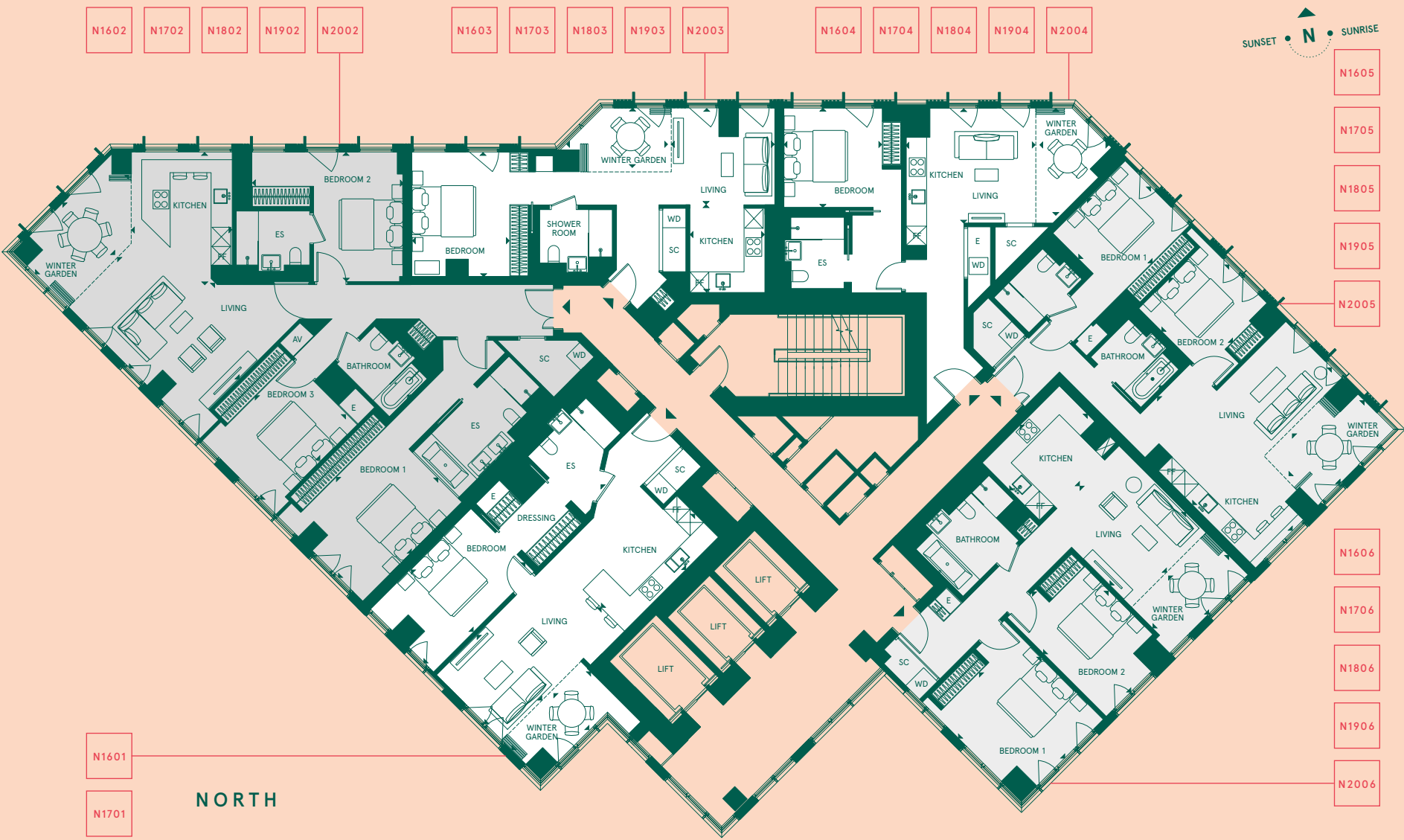
1 BEDROOM APARTMENT		
Total internal area	63sqm	683sqft
Living room	3.95m x 3.22m	12'11" x 10'7"
Kitchen	5.61m x 4.23m	18'5" x 13'10"
Winter garden	1.81m x 3.22m	5'11" x 10'7"
Bedroom	3.38m x 3.63m	11'1" x 11'11"

S1605	S1705	S1805	S1905	S2005
-------	-------	-------	-------	-------

2 BEDROOM APARTMENT		
Total internal area	99sqm	1062sqft
Kitchen / Living	7.05m x 3.31m	23'1" x 10'10"
Winter garden	3.51m x 3.12m	11'6" x 10'3"
Bedroom 1	3.11m x 2.82m	10'2" x 9'3"
Bedroom 2	3.92m x 2.30m	12'10" x 9'10"

S1606	S1706	S1806	S1906	S2006
-------	-------	-------	-------	-------

1 BEDROOM APARTMENT		
Total internal area	58sqm	621sqft
Living room	3.89m x 3.31m	12'9" x 10'10"
Kitchen	4.68m x 2.21m	15'4" x 7'3"
Winter garden	3.00m x 1.97m	9'10" x 6'6"
Bedroom	3.89m x 2.82m	12'9" x 9'3"



NORTH

N1601	N1701	N1801	N1901	N2001
-------	-------	-------	-------	-------

SOUTH

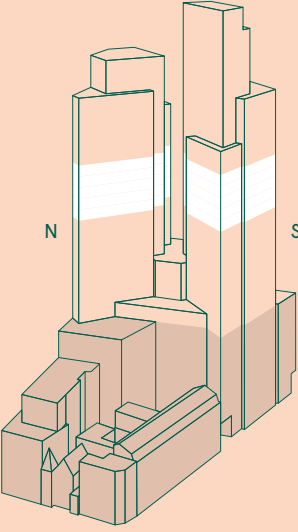
S1606	S1706	S1806	S1906	S2006
-------	-------	-------	-------	-------



N1606	N1706	N1806	N1906	N2006
-------	-------	-------	-------	-------

S1601	S1701	S1801	S1901	S2001
-------	-------	-------	-------	-------

S1602	S1702	S1802	S1902	S2002
-------	-------	-------	-------	-------



Any areas, dimensions, measurements or distances are approximate. All floorplans are for approximate measurements only and intended to give a general indication of the proposed floor layout. All measurements are within a reasonable tolerance in accordance with the sales contract and are provided as Gross Internal Areas according to the Royal Institution of Chartered Surveyors Code of Measuring Practice. Kitchen and bathroom layouts are indicative only and subject to change. Furniture is shown for illustrative purposes only.

FLOOR 21-22

KEY

- 1 BEDROOM APARTMENT
- 2 BEDROOM APARTMENT
- 3 BEDROOM APARTMENT

- C – CUPBOARD
- E – ELECTRICAL
- ES – EN-SUITE
- FF – FRIDGE/FREEZER
- SC – SERVICE CUPBOARD
- WD – WASHER/DRYER

NORTH

N2101 N2201

1 BEDROOM APARTMENT	
Total internal area	67sqm
Living room	5.21m x 2.92m
Kitchen	4.20m x 3.69m
Winter garden	3.53m x 1.62m
Bedroom	4.51m x 2.82m

N2102 N2202

3 BEDROOM APARTMENT	
Total internal area	141sqm
Living room	5.45m x 3.83m
Kitchen	4.20m x 3.20m
Winter garden	4.30m x 2.33m
Bedroom 1	4.44m x 3.46m
Bedroom 2	4.11m x 4.79m
Bedroom 3	3.84m x 2.92m

N2103 N2203

1 BEDROOM APARTMENT	
Total internal area	58sqm
Living room	3.07m x 3.25m
Kitchen	2.78m x 2.38m
Winter garden	3.23m x 1.94m
Bedroom	3.94m x 3.12m

N2104 N2204

1 BEDROOM APARTMENT	
Total internal area	57sqm
Kitchen / Living	4.11m x 3.75m
Winter garden	3.44m x 2.20m
Bedroom	3.03m x 3.11m

N2105 N2205

2 BEDROOM APARTMENT	
Total internal area	80sqm
Kitchen / Living	6.03m x 6.23m
Winter garden	2.18m x 3.40m
Bedroom 1	2.91m x 2.90m
Bedroom 2	2.85m x 3.00m

N2106 N2206

2 BEDROOM APARTMENT	
Total internal area	81sqm
Living room	3.90m x 3.36m
Kitchen	2.70m x 3.46m
Winter garden	1.77m x 3.36m
Bedroom 1	3.85m x 3.69m
Bedroom 2	4.45m x 2.90m

SOUTH

S2101 S2201

1 BEDROOM APARTMENT	
Total internal area	57sqm
Living room	3.75m x 3.63m
Kitchen	5.42m x 2.31m
Winter garden	3.19m x 1.69m
Bedroom	3.75m x 2.97m

S2102 S2202

2 BEDROOM APARTMENT	
Total internal area	80sqm
Kitchen / Living	4.60m x 3.76m
Winter garden	3.92m x 1.68m
Bedroom 1	3.00m x 2.83m
Bedroom 2	2.93m x 2.88m

S2103 S2203

2 BEDROOM APARTMENT	
Total internal area	88sqm
Kitchen / Living	6.70m x 3.58m
Winter garden	3.14m x 2.81m
Bedroom 1	3.86m x 3.51m
Bedroom 2	3.19m x 2.85m

S2104 S2204

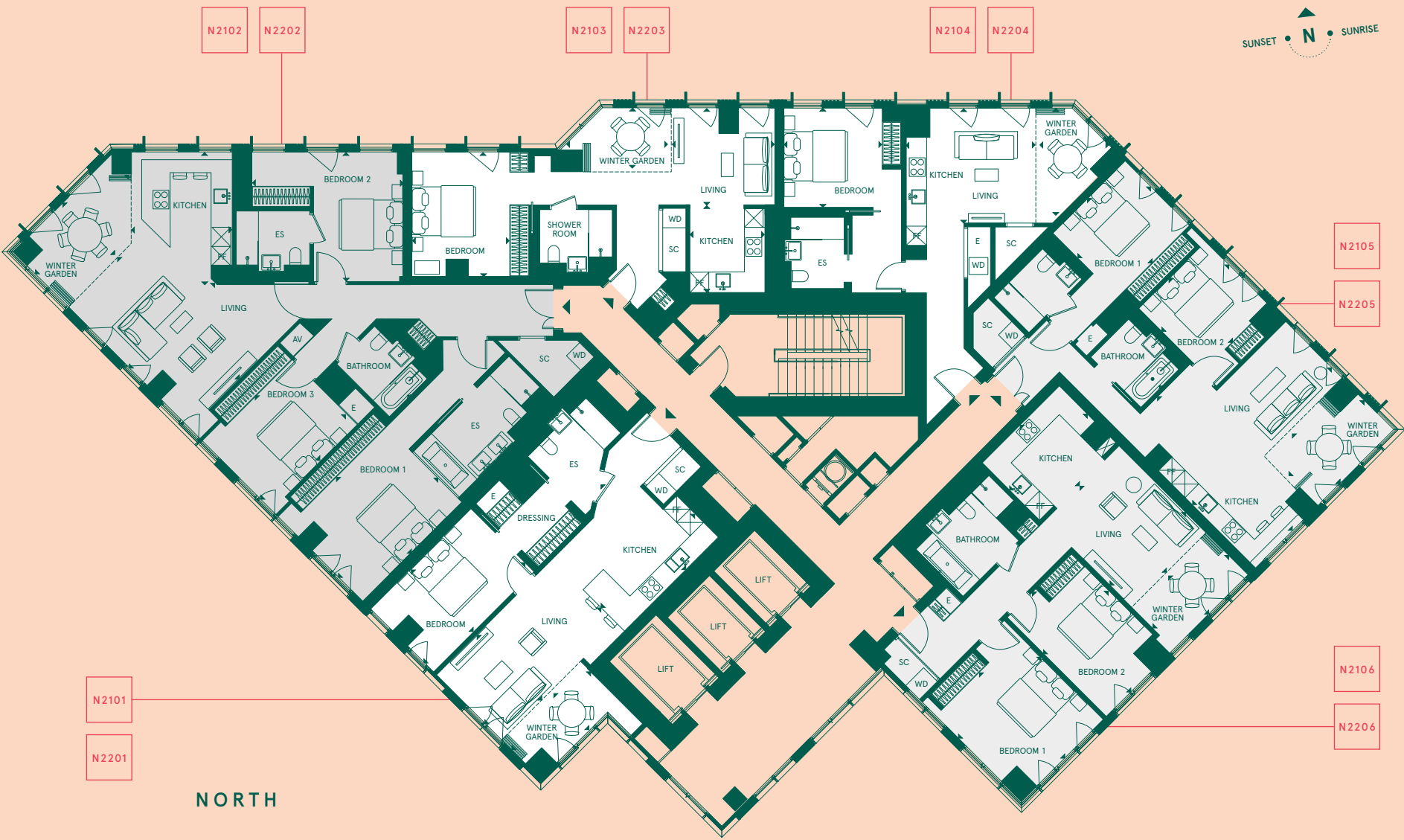
1 BEDROOM APARTMENT	
Total internal area	63sqm
Living room	3.95m x 3.22m
Kitchen	5.60m x 4.23m
Winter garden	1.81m x 3.22m
Bedroom	3.38m x 3.63m

S2105 S2205

2 BEDROOM APARTMENT	
Total internal area	99sqm
Kitchen / Living	7.05m x 3.31m
Winter garden	3.51m x 3.12m
Bedroom 1	3.11m x 2.82m
Bedroom 2	3.92m x 2.30m

S2106 S2206

1 BEDROOM APARTMENT	
Total internal area	58sqm
Living room	3.89m x 3.31m
Kitchen	4.68m x 2.21m
Winter garden	3.00m x 1.97m
Bedroom	3.89m x 2.83m

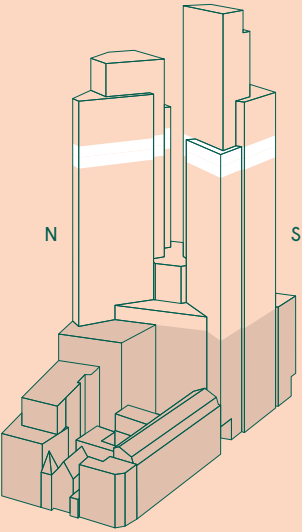


NORTH

SOUTH



Any areas, dimensions, measurements or distances are approximate. All floorplans are for approximate measurements only and intended to give a general indication of the proposed floor layout. All measurements are within a reasonable tolerance in accordance with the sales contract and are provided as Gross Internal Areas according to the Royal Institution of Chartered Surveyors Code of Measuring Practice. Kitchen and bathroom layouts are indicative only and subject to change. Furniture is shown for illustrative purposes only.



FLOOR 23

KEY

- 1 BEDROOM APARTMENT
- 2 BEDROOM APARTMENT
- 3 BEDROOM APARTMENT

- C – CUPBOARD
- E – ELECTRICAL
- ES – EN-SUITE
- FF – FRIDGE/FREEZER
- SC – SERVICE CUPBOARD
- WD – WASHER/DRYER

NORTH

N2301

1 BEDROOM APARTMENT			
Total internal area	67sqm	722sqft	
Living room	5.21m × 2.96m	17'0" × 9'8"	
Kitchen	4.20m × 3.69m	13'9" × 12'1"	
Winter garden	3.63m × 1.58m	11'10" × 5'2"	
Bedroom	4.51m × 2.82m	14'9" × 9'3"	

N2302

3 BEDROOM APARTMENT			
Total internal area	141sqm	1515sqft	
Living room	3.83m × 5.45m	16'2" × 12'6"	
Kitchen	4.20m × 3.20m	13'10" × 10'6"	
Winter garden	4.30m × 2.33m	14'1" × 9'4"	
Bedroom 1	4.45m × 3.46m	14'5" × 11'1"	
Bedroom 2	4.79m × 4.11m	15'9" × 13'6"	
Bedroom 3	3.84m × 2.91m	12'7" × 9'6"	

N2303

1 BEDROOM APARTMENT			
Total internal area	59sqm	640sqft	
Kitchen / Living	4.30m × 5.05m	14'1" × 16'6"	
Winter garden	1.50m × 4.77m	4'11" × 15'7"	
Bedroom	3.34m × 2.97m	10'11" × 9'8"	

N2304

1 BEDROOM APARTMENT			
Total internal area	54sqm	580sqft	
Kitchen / Living	3.83m × 3.30m	12'6" × 10'9"	
Winter garden	2.41m × 3.34m	7'10" × 10'11"	
Bedroom	3.10m × 3.09m	10'2" × 10'1"	

N2305

2 BEDROOM APARTMENT			
Total internal area	80sqm	859sqft	
Kitchen / Living	6.03m × 6.23m	19'3" × 20'4"	
Winter garden	2.18m × 3.40m	7'1" × 6'8"	
Bedroom 1	2.90m × 2.85m	9'6" × 9'4"	
Bedroom 2	2.85m × 3.00m	10'8" × 9'4"	

N2306

2 BEDROOM APARTMENT			
Total internal area	81sqm	873sqft	
Living room	3.90m × 3.36m	12'9" × 11'0"	
Kitchen	2.70m × 3.46m	8'10" × 11'4"	
Winter garden	3.36m × 1.77m	11'0" × 5'9"	
Bedroom 1	3.85m × 3.69m	12'7" × 12'1"	
Bedroom 2	4.45m × 2.90m	14'7" × 9'6"	

SOUTH

S2301

1 BEDROOM APARTMENT			
Total internal area	57sqm	611sqft	
Living room	3.75m × 3.63m	12'4" × 11'11"	
Kitchen	5.42m × 2.31m	17'9" × 7'7"	
Winter garden	3.19m × 1.69m	10'5" × 5'7"	
Bedroom	3.75m × 2.97m	12'3" × 9'9"	

S2302

2 BEDROOM APARTMENT			
Total internal area	80sqm	863sqft	
Kitchen / Living	4.60m × 3.76m	15'1" × 12'4"	
Winter garden	3.92m × 1.68m	12'12" × 5'6"	
Bedroom 1	3.00m × 2.83m	9'10" × 9'3"	
Bedroom 2	2.93m × 2.88m	9'7" × 9'9"	

S2303

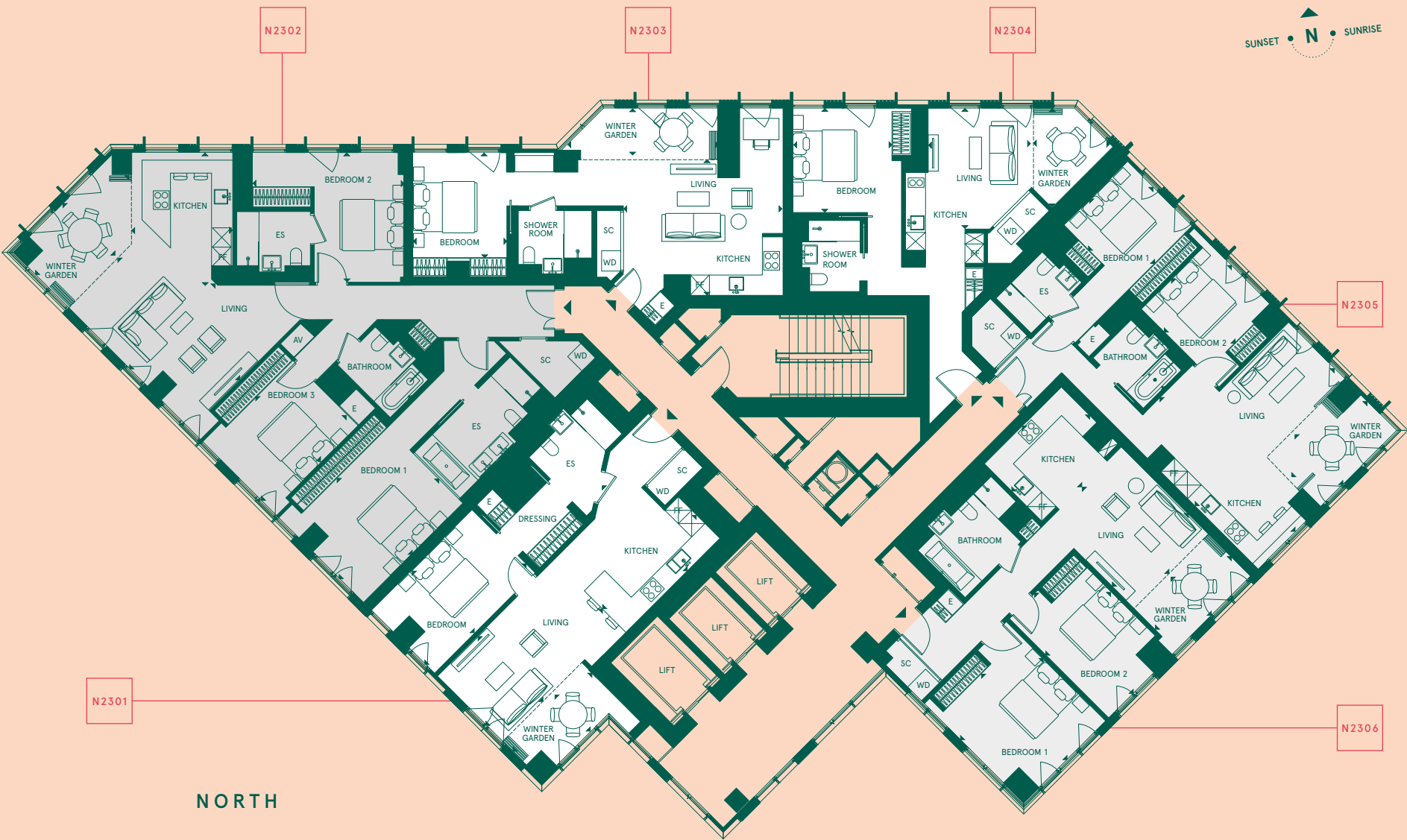
2 BEDROOM APARTMENT			
Total internal area	86sqm	925sqft	
Kitchen / Living	6.70m × 3.58m	22'0" × 11'9"	
Winter garden	3.14m × 2.81m	10'3" × 9'2"	
Bedroom 1	3.85m × 3.20m	12'9" × 10'4"	
Bedroom 2	3.19m × 2.80m	10'5" × 9'1"	

S2304

1 BEDROOM APARTMENT			
Total internal area	60sqm	651sqft	
Living room	3.83m × 2.86m	12'7" × 9'4"	
Kitchen	5.71m × 4.21m	18'9" × 13'10"	
Winter garden	2.89m × 1.83m	9'4" × 6'0"	
Bedroom	4.17m × 2.90m	13'8" × 9'5"	

S2305

2 BEDROOM APARTMENT			
Total internal area	93sqm	1004sqft	
Terrace	50sqm	540sqft	
Kitchen / Living	6.14m × 5.64m	20'2" × 18'6"	
Bedroom 1	4.90m × 2.80m	16'1" × 9'6"	
Bedroom 2	2.83m × 3.06m	10'0" × 9'4"	

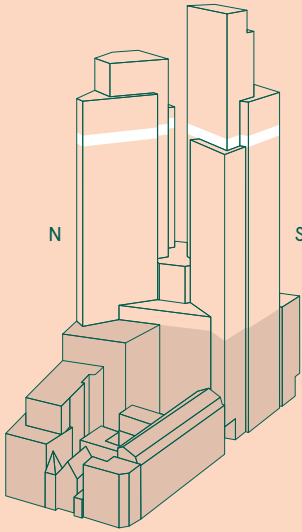


NORTH

SOUTH



Any areas, dimensions, measurements or distances are approximate. All floorplans are for approximate measurements only and intended to give a general indication of the proposed floor layout. All measurements are within a reasonable tolerance in accordance with the sales contract and are provided as Gross Internal Areas according to the Royal Institution of Chartered Surveyors Code of Measuring Practice. Kitchen and bathroom layouts are indicative only and subject to change. Furniture is shown for illustrative purposes only.



FLOOR 24

KEY

- 1 BEDROOM APARTMENT
- 2 BEDROOM APARTMENT
- 3 BEDROOM APARTMENT

- C – CUPBOARD
- E – ELECTRICAL
- ES – EN-SUITE
- FF – FRIDGE/FREEZER
- SC – SERVICE CUPBOARD
- WD – WASHER/DRYER

NORTH

N2401

1 BEDROOM APARTMENT			
Total internal area	67sqm	722sqft	
Living room	5.21m × 2.96m	17'0" × 9'8"	
Kitchen	4.20m × 3.69m	13'9" × 12'1"	
Winter garden	3.63m × 1.58m	11'10" × 5'2"	
Bedroom	4.54m × 2.82m	14'10" × 9'3"	

N2402

3 BEDROOM APARTMENT			
Total internal area	141sqm	1515sqft	
Living room	3.83m × 5.45m	16'2" × 12'6"	
Kitchen	4.20m × 3.20m	13'10" × 10'6"	
Winter garden	4.30m × 2.33m	14'1" × 9'4"	
Bedroom 1	4.45m × 3.46m	14'5" × 11'1"	
Bedroom 2	4.79m × 4.11m	15'9" × 13'6"	
Bedroom 3	3.84m × 2.91m	12'7" × 9'6"	

N2403

1 BEDROOM APARTMENT			
Total internal area	59sqm	640sqft	
Kitchen / Living	4.30m × 5.05m	14'1" × 16'6"	
Winter garden	1.50m × 4.77m	4'11" × 15'7"	
Bedroom	3.34m × 2.97m	10'11" × 9'8"	

N2404

1 BEDROOM APARTMENT			
Total internal area	54sqm	580sqft	
Kitchen / Living	3.83m × 3.30m	12'6" × 10'9"	
Winter garden	2.41m × 3.34m	7'10" × 10'11"	
Bedroom	3.10m × 3.09m	10'2" × 10'1"	

N2405

2 BEDROOM APARTMENT			
Total internal area	80sqm	859sqft	
Kitchen / Living	6.03m × 6.23m	19'3" × 20'4"	
Winter garden	2.17m × 3.40m	6'8" × 12'9"	
Bedroom 1	2.91m × 2.85m	9'4" × 9'6"	
Bedroom 2	2.85m × 3.00m	10'8" × 9'4"	

N2406

2 BEDROOM APARTMENT			
Total internal area	81sqm	873sqft	
Living room	3.90m × 3.36m	12'9" × 11'0"	
Kitchen	2.70m × 3.46m	8'10" × 11'4"	
Winter garden	1.77m × 3.36m	5'9" × 11'0"	
Bedroom 1	3.85m × 3.69m	12'7" × 12'1"	
Bedroom 2	4.45m × 2.90m	14'7" × 9'6"	

SOUTH

S2401

1 BEDROOM APARTMENT			
Total internal area	57sqm	611sqft	
Living room	3.75m × 3.77m	12'4" × 12'4"	
Kitchen	5.42m × 2.31m	17'9" × 7'7"	
Winter garden	3.19m × 1.69m	10'5" × 5'7"	
Bedroom	3.75m × 2.83m	12'3" × 9'3"	

S2402

2 BEDROOM APARTMENT			
Total internal area	80sqm	863sqft	
Kitchen / Living	4.60m × 3.76m	15'1" × 12'4"	
Winter garden	3.92m × 1.68m	12'10" × 5'6"	
Bedroom 1	3.00m × 2.83m	9'10" × 9'3"	
Bedroom 2	2.93m × 2.88m	9'7" × 9'9"	

S2403

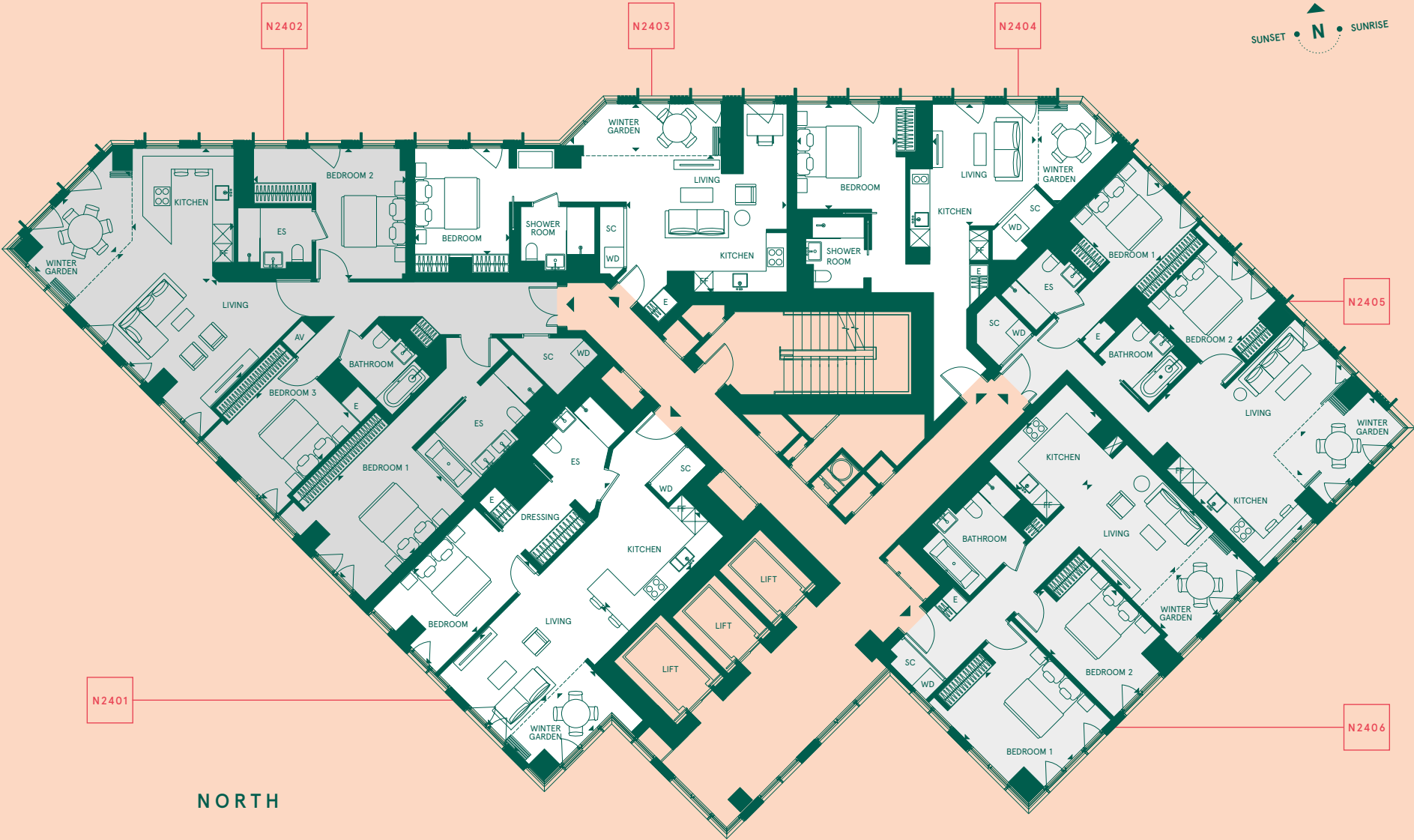
2 BEDROOM APARTMENT			
Total internal area	86sqm	925sqft	
Kitchen / Living	6.70m × 3.58m	22'0" × 11'9"	
Winter garden	3.14m × 2.81m	10'3" × 9'2"	
Bedroom 1	3.85m × 3.20m	12'9" × 10'4"	
Bedroom 2	3.19m × 2.80m	10'5" × 9'1"	

S2404

1 BEDROOM APARTMENT			
Total internal area	62sqm	673sqft	
Living room	3.83m × 2.86m	12'7" × 9'4"	
Kitchen	5.71m × 4.21m	18'9" × 13'10"	
Winter garden	1.83m × 2.86m	6'0" × 9'4"	
Bedroom	4.17m × 3.18m	13'8" × 10'5"	

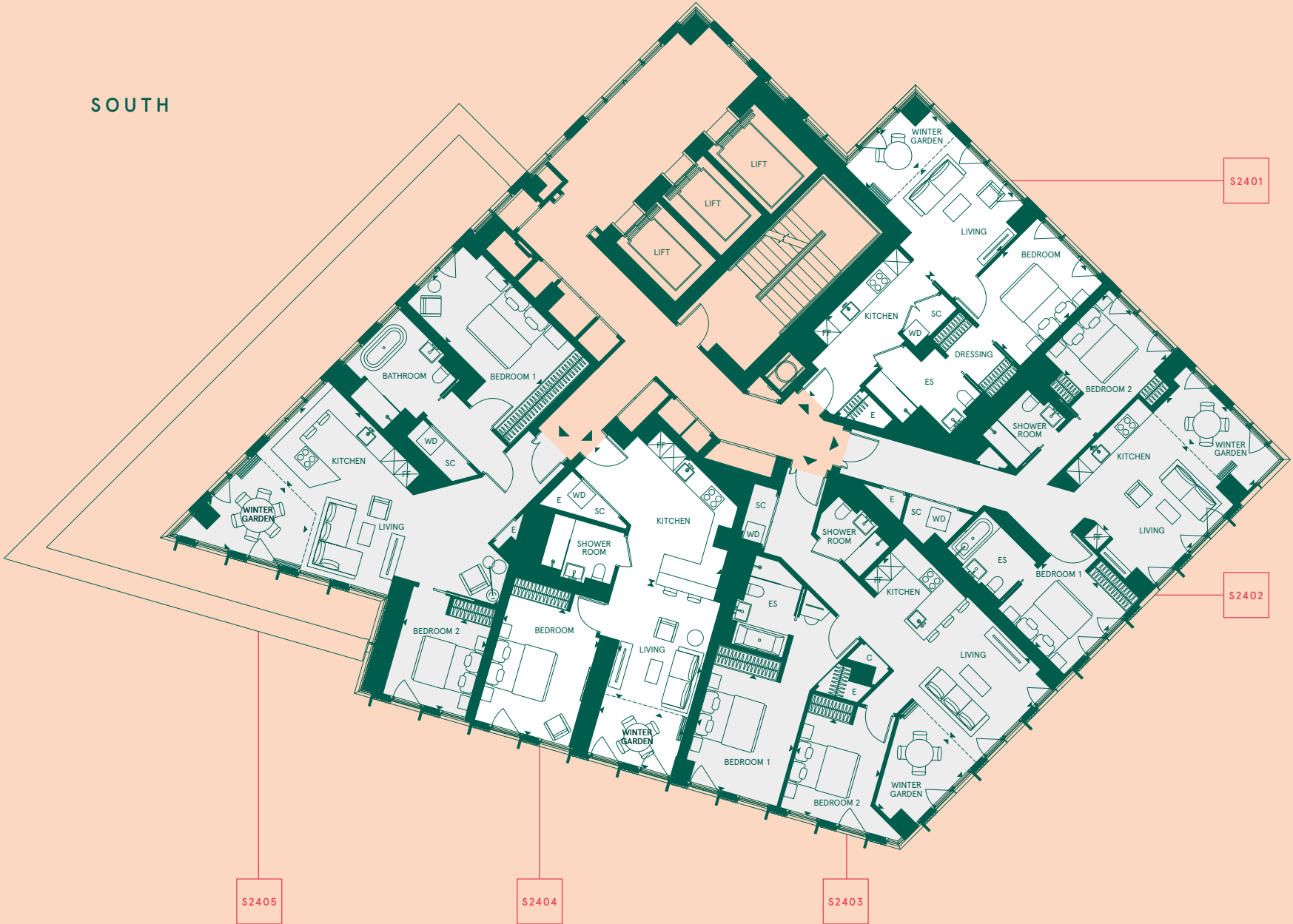
S2405

2 BEDROOM APARTMENT			
Total internal area	92sqm	993sqft	
Kitchen / Living	8.94m × 3.29m	29'4" × 10'9"	
Winter garden	3.30m × 2.73m	10'10" × 8'11"	
Bedroom 1	4.90m × 2.80m	16'1" × 9'1"	
Bedroom 2	2.93m × 2.78m	9'7" × 9'0"	

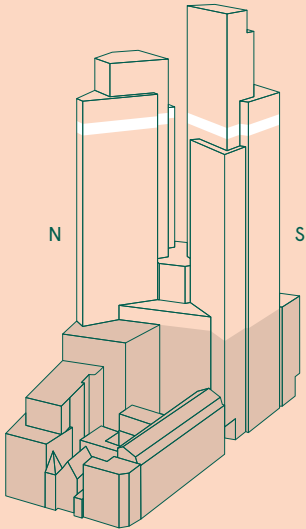


NORTH

SOUTH



Any areas, dimensions, measurements or distances are approximate. All floorplans are for approximate measurements only and intended to give a general indication of the proposed floor layout. All measurements are within a reasonable tolerance in accordance with the sales contract and are provided as Gross Internal Areas according to the Royal Institution of Chartered Surveyors Code of Measuring Practice. Kitchen and bathroom layouts are indicative only and subject to change. Furniture is shown for illustrative purposes only.



FLOOR 25

KEY

- 1 BEDROOM APARTMENT
- 2 BEDROOM APARTMENT
- 3 BEDROOM APARTMENT

- C – CUPBOARD
- E – ELECTRICAL
- ES – EN-SUITE
- FF – FRIDGE/FREEZER
- SC – SERVICE CUPBOARD
- WD – WASHER/DRYER

NORTH

N2501

1 BEDROOM APARTMENT

Total internal area	67sqm	722sqft
Living room	5.21m × 2.96m	17'0" × 9'8"
Kitchen	4.20m × 3.69m	13'9" × 12'1"
Winter garden	1.58m × 3.63m	5'2" × 11'10"
Bedroom	4.51m × 2.82m	14'9" × 9'3"

N2502

3 BEDROOM APARTMENT

Total internal area	141sqm	1515sqft
Living room	3.83m × 5.45m	16'2" × 12'6"
Kitchen	4.20m × 3.20m	13'10" × 10'6"
Winter garden	4.30m × 2.33m	9'4" × 14'1"
Bedroom 1	4.45m × 3.46m	14'5" × 11'1"
Bedroom 2	4.79m × 4.11m	15'9" × 15'7"
Bedroom 3	2.92m × 3.84m	12'6" × 9'6"

SOUTH

S2501

1 BEDROOM APARTMENT

Total internal area	57sqm	611sqft
Living room	3.75m × 3.63m	12'4" × 11'11"
Kitchen	5.42m × 2.31m	17'9" × 7'7"
Winter garden	3.19m × 1.96m	10'5" × 6'5"
Bedroom	3.75m × 2.97m	12'3" × 9'2"

S2502

2 BEDROOM APARTMENT

Total internal area	80sqm	863sqft
Kitchen / Living	4.60m × 3.76m	15'1" × 12'4"
Winter garden	3.92m × 1.68m	12'10" × 5'6"
Bedroom 1	3.00m × 2.83m	9'10" × 9'3"
Bedroom 2	2.93m × 2.88m	9'7" × 9'9"

S2503

2 BEDROOM APARTMENT

Total internal area	86sqm	925sqft
Kitchen / Living	6.70m × 3.58m	22'0" × 11'9"
Winter garden	3.14m × 2.81m	10'3" × 9'2"
Bedroom 1	3.85m × 3.20m	12'9" × 10'4"
Bedroom 2	3.19m × 2.80m	10'5" × 9'1"

S2504

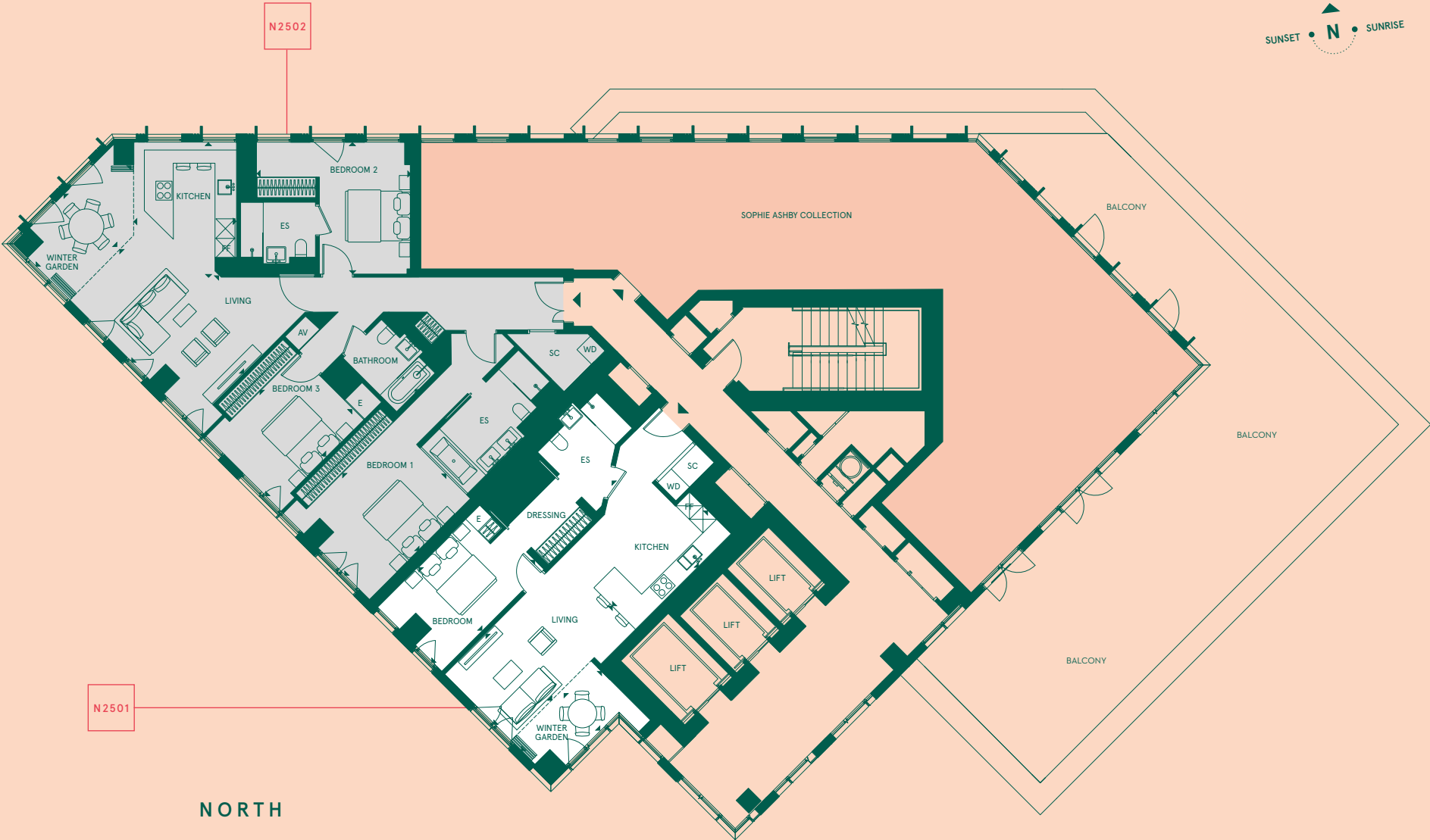
1 BEDROOM APARTMENT

Total internal area	62sqm	672sqft
Living room	3.83m × 2.86m	12'7" × 9'4"
Kitchen	5.71m × 4.21m	18'9" × 13'10"
Winter garden	2.81m × 1.83m	9'2" × 6'0"
Bedroom	4.17m × 3.66m	13'8" × 11'9"

S2505

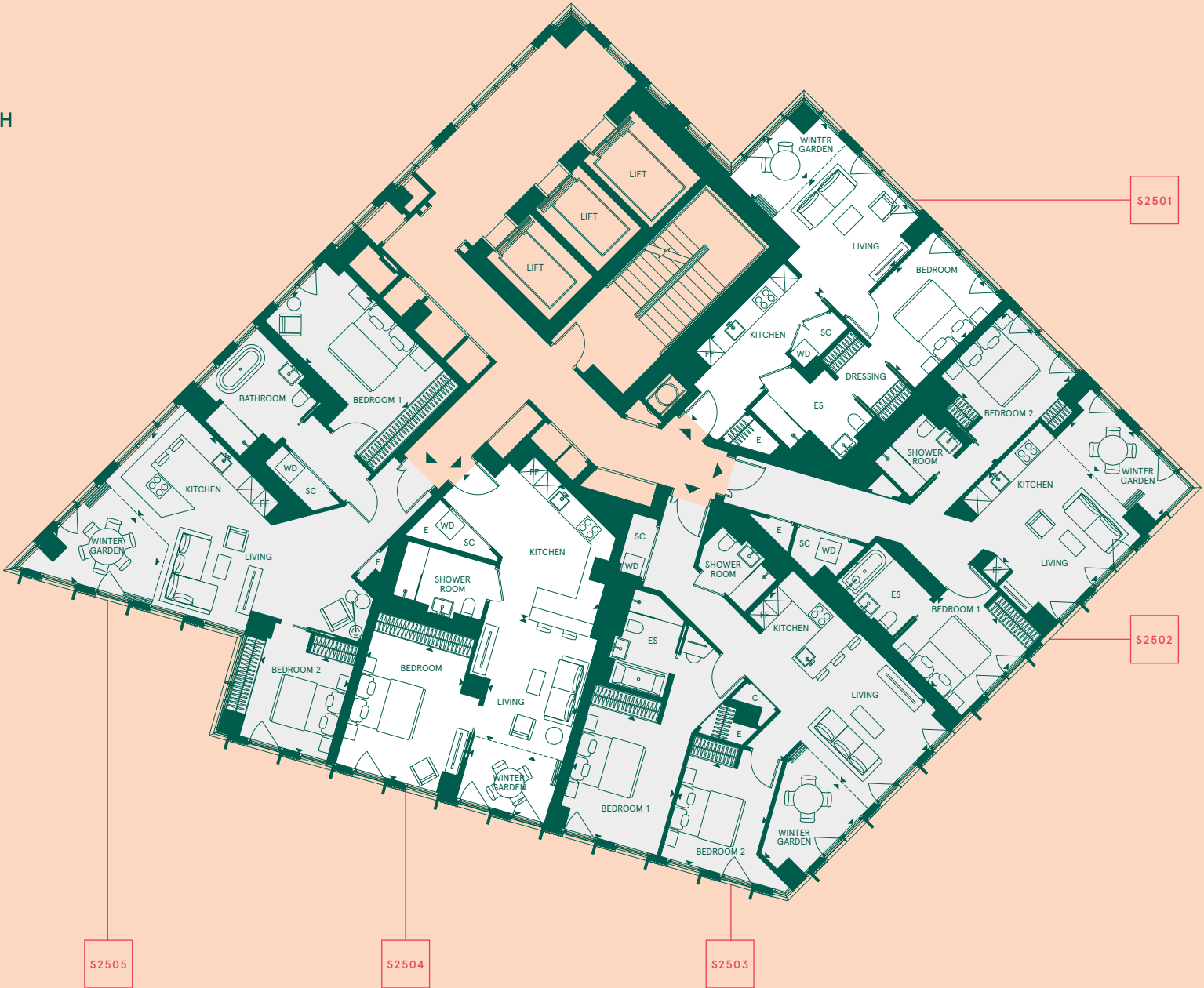
2 BEDROOM APARTMENT

Total internal area	92sqm	986sqft
Kitchen / Living	8.94m × 3.29m	29'4" × 10'9"
Winter garden	2.73m × 3.30m	9'11" × 10'10"
Bedroom 1	4.90m × 2.78m	16'1" × 9'1"
Bedroom 2	2.99m × 2.78m	9'9" × 9'0"



NORTH

SOUTH



Any areas, dimensions, measurements or distances are approximate. All floorplans are for approximate measurements only and intended to give a general indication of the proposed floor layout. All measurements are within a reasonable tolerance in accordance with the sales contract and are provided as Gross Internal Areas according to the Royal Institution of Chartered Surveyors Code of Measuring Practice. Kitchen and bathroom layouts are indicative only and subject to change. Furniture is shown for illustrative purposes only.

FLOOR 26

KEY

- 1 BEDROOM APARTMENT
- 2 BEDROOM APARTMENT
- 3 BEDROOM APARTMENT

- C – CUPBOARD
- E – ELECTRICAL
- ES – EN-SUITE
- FF – FRIDGE/FREEZER
- SC – SERVICE CUPBOARD
- WD – WASHER/DRYER

NORTH

N2601

1 BEDROOM APARTMENT		
Total internal area	67sqm	722sqft
Living room	2.96m × 5.21m	9'8" × 17'0"
Kitchen	3.69m × 4.20m	12'1" × 13'9"
Winter garden	3.63m × 1.58m	11'10" × 5'2"
Bedroom	4.51m × 2.82m	14'9" × 9'3"

N2602

3 BEDROOM APARTMENT		
Total internal area	141sqm	1515sqft
Living room	3.83m × 5.45m	16'2" × 12'6"
Kitchen	4.20m × 3.20m	13'10" × 10'6"
Winter garden	4.30m × 2.33m	14'1" × 9'4"
Bedroom 1	4.46m × 3.46m	14'5" × 11'1"
Bedroom 2	4.79m × 4.11m	15'9" × 13'6"
Bedroom 3	3.84m × 2.92m	12'7" × 9'6"

Floors 27-33 comprise the Sophie Ashby Collection. To discover more about these unique penthouse apartments, please get in touch with one of our agents.

SOUTH

S2601

1 BEDROOM APARTMENT		
Total internal area	57sqm	611sqft
Living room	3.75m × 3.77m	12'4" × 12'4"
Kitchen	5.42m × 2.31m	17'9" × 7'7"
Winter garden	1.69m × 3.19m	5'7" × 10'5"
Bedroom	3.75m × 2.83m	12'3" × 9'3"

S2602

2 BEDROOM APARTMENT		
Total internal area	80sqm	863sqft
Kitchen / Living	4.60m × 3.76m	15'1" × 12'4"
Winter garden	3.92m × 1.68m	12'10" × 5'6"
Bedroom 1	3.00m × 2.83m	9'10" × 9'3"
Bedroom 2	2.93m × 2.88m	9'7" × 9'5"

S2603

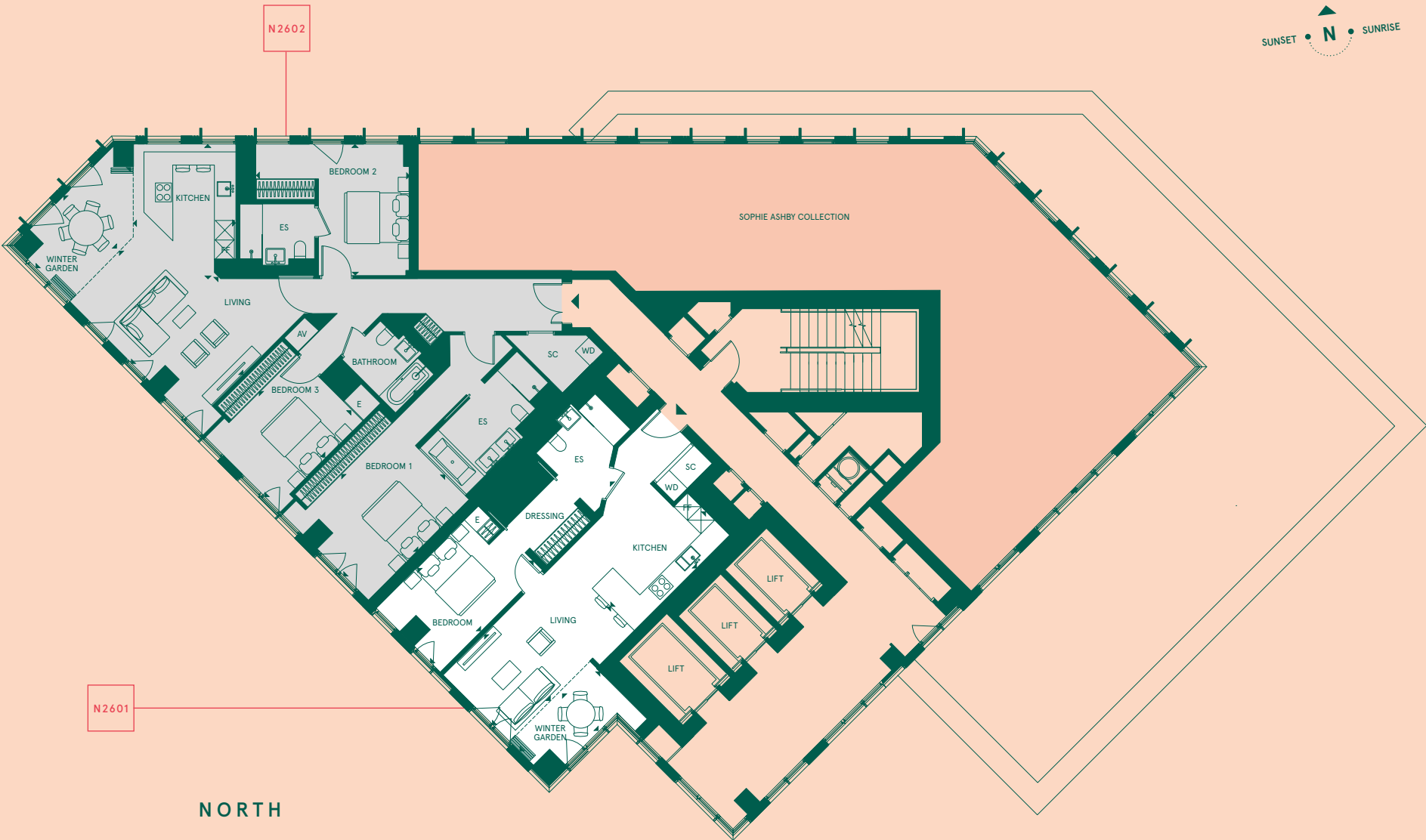
2 BEDROOM APARTMENT		
Total internal area	86sqm	925sqft
Kitchen / Living	6.70m × 3.58m	22'0" × 11'9"
Winter garden	3.14m × 2.81m	10'3" × 9'2"
Bedroom 1	3.20m × 3.85m	10'6" × 12'8"
Bedroom 2	3.19m × 2.80m	10'6" × 9'2"

S2604

1 BEDROOM APARTMENT		
Total internal area	62sqm	672sqft
Living room	3.83m × 3.86m	12'7" × 9'4"
Kitchen	5.71m × 4.03m	18'9" × 13'2"
Winter garden	1.83m × 2.81m	6'0" × 9'2"
Bedroom	4.17m × 3.18m	13'8" × 10'5"

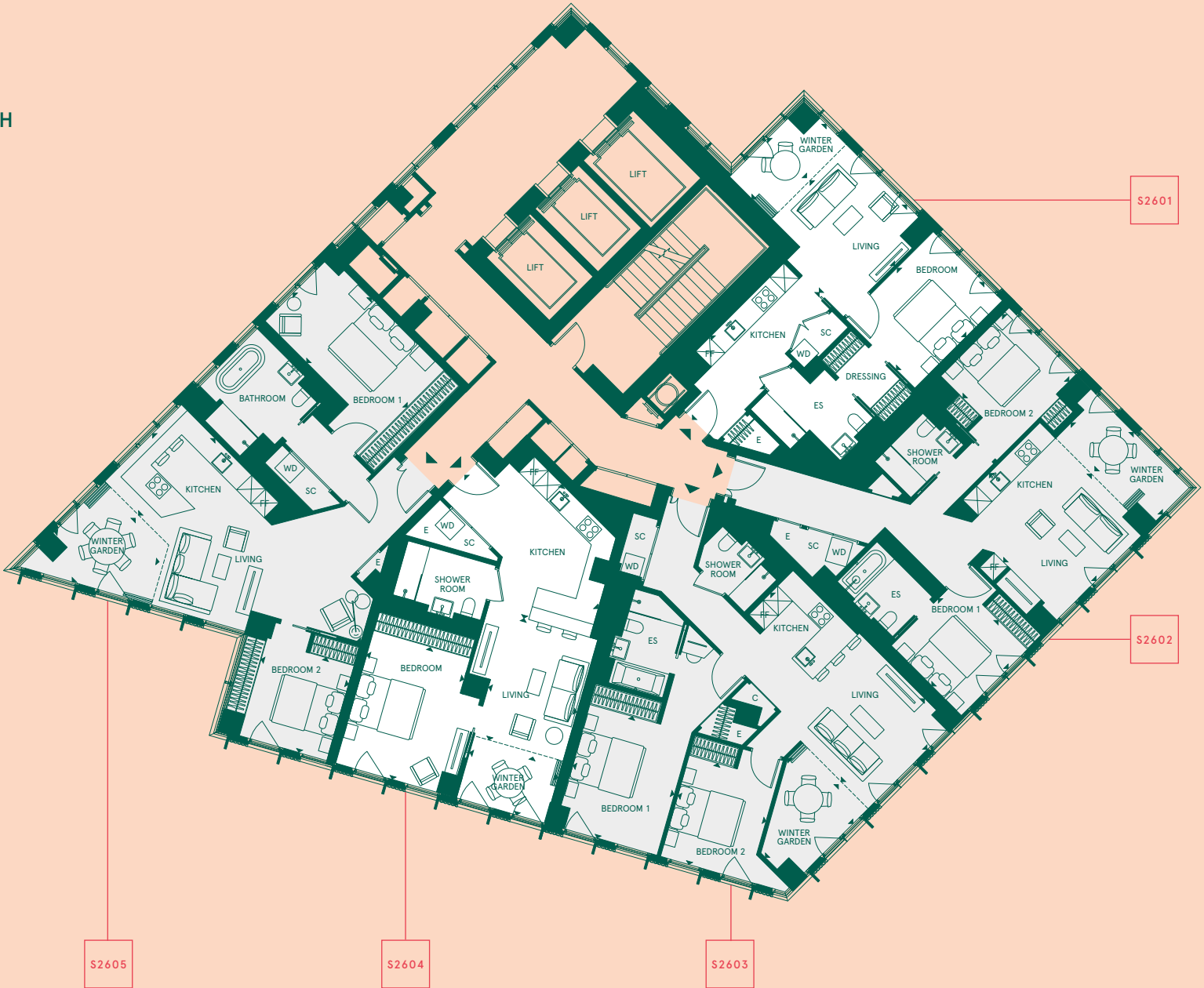
S2605

2 BEDROOM APARTMENT		
Total internal area	92sqm	986sqft
Kitchen / Living	8.94m × 3.29m	29'4" × 10'9"
Winter garden	3.30m × 2.73m	10'10" × 8'11"
Bedroom 1	4.90m × 2.78m	16'1" × 9'1"
Bedroom 2	2.99m × 2.78m	9'10" × 9'1"



NORTH

SOUTH



Any areas, dimensions, measurements or distances are approximate. All floorplans are for approximate measurements only and intended to give a general indication of the proposed floor layout. All measurements are within a reasonable tolerance in accordance with the sales contract and are provided as Gross Internal Areas according to the Royal Institution of Chartered Surveyors Code of Measuring Practice. Kitchen and bathroom layouts are indicative only and subject to change. Furniture is shown for illustrative purposes only.

SPECIFICATION

KITCHEN

- ITALIAN-MADE ARCLINEA KITCHEN WITH A FENIX FINISH IN A DARK PALETTE.
- REEDED GLASS FRONTS TO WALL UNITS WITH CONCEALED LED LIGHTING BELOW.
- COMPOSITE STONE WORKTOP.
- UNDER-MOUNTED STAINLESS STEEL SINK WITH MIXER TAP.
- NATURAL STONE TILED SPLASHBACK.
- INTEGRATED APPLIANCES: (SIEMENS OR SIMILAR)
MULTI-FUNCTION ELECTRIC OVEN
MICROWAVE**
INDUCTION HOB
FRIDGE/FREEZER
DISHWASHER
WASHER/DRYER.

BATHROOM & EN-SUITE

- PORCELAIN SATIN WHITE FLOOR TILES.
- CERAMIC BRICK PATTERNED TILES TO WALL AREAS.
- MOSAIC TILING TO SHOWER AREAS.
- NATURAL MARBLE COUNTER TOP WITH UNDER-MOUNTED BASIN AND OPEN STORAGE BELOW.
- CHROME MIXER TAPS.
- MIRROR-FACED VANITY UNIT, INTEGRATED SHELVING, SHAVER SOCKET AND DEMISTER PAD.
- FRAMELESS GLASS SHOWER SCREENS.
- CHROME WALL-MOUNTED SHOWER WITH HAND SHOWER.
- WALL-HUNG WC WITH CONCEALED CISTERN, SOFT-CLOSE SEAT AND DUAL-FLUSH PLATE.
- WHITE ENAMEL UNDER-MOUNTED BATH.
- HEATED TOWEL RAIL.
- ACCESSORIES INCLUDE ROBE HOOK AND TOILET ROLL HOLDER.

FLOORS

- HIGH QUALITY ENGINEERED OAK HERRINGBONE FLOORING TO HALLWAY, LIVING ROOM, KITCHEN AND MASTER BEDROOM.
- WOOL CARPET TO GUEST BEDROOMS.

FLOORPLANS & SPECIFICATION

DOORS

- FULL-HEIGHT TIMBER ENTRANCE DOOR.
- FULL-HEIGHT TIMBER PAINTED DOORS THROUGHOUT.
- BESPOKE METAL BIFOLD DOORS TO WINTER GARDENS.

WARDROBES

- B&B ITALIA FITTED WARDROBES WITH TIMBER LAMINATE DOORS AND INTERNAL FITTINGS TO INCLUDE A HIGH-LEVEL SHELF, HANGING RAIL, FULL HEIGHT MIRROR AND LIGHTING.

LIGHTING & ELECTRICAL

- FEATURE TRACK LIGHTING TO LIVING ROOMS AND BEDROOMS.
- LED DOWNLIGHTS TO KITCHENS, DRESSING AREAS AND BATHROOMS.
- PENDANT LIGHTING ABOVE BREAKFAST BAR IN SELECTED APARTMENTS.
- SIGNATURE BATHROOM WALL LIGHT IN SELECTED APARTMENTS.
- 5 AMP LIGHTING AND 13 AMP POWER CIRCUITS.
- SOCKETS AND LIGHTING SWITCH PLATES FINISHED IN BRUSHED METAL OR SIMILAR HIGH QUALITY FINISH.
- DATA AND TV POINTS IN ALL LIVING ROOMS AND MASTER BEDROOMS*.
- ALL APARTMENTS WILL HAVE ACCESS TO FAST FIBRE DATA NETWORKS.

HEATING & COOLING

- UNDERFLOOR HEATING THROUGHOUT ALL APARTMENTS.
- COMFORT COOLING TO RECEPTION ROOMS AND BEDROOMS.

SECURITY

- 24 HOUR ONSITE SECURITY WITH CCTV MONITORING.
- ACCESS CONTROL TO ALL BUILDING ENTRANCES.

RESIDENTS’ AMENITIES

- 24 HOUR CONCIERGE AND FULL RANGE OF RESIDENTS’ AMENITIES INCLUDING RESIDENTS’ LOUNGE, SCREENING ROOM, WORKHUB, GYM, PRIVATE DINING ROOM, TREATMENT ROOM AND COMMUNAL TERRACE.

Variances to washer/dryer location may occur between apartment types. Please refer to a sales consultant for specific apartment information.
Specification provided is for standard apartments only. For details on the proposed specification of Sophie Ashby apartments please refer to a sales consultant.
*Subject to individual apartment layouts. **Selected apartments include a combined oven/microwave unit.



A computer generated image of a typical kitchen

DEVELOPED BY

MTD

MTD GROUP IS A MULTINATIONAL INFRASTRUCTURE-BASED COMPANY HEADQUARTERED IN KUALA LUMPUR, MALAYSIA. IT IS ACTIVE IN 15 COUNTRIES WITH INVESTMENT PORTFOLIOS IN PROPERTIES & REAL ESTATE, CIVIL ENGINEERING & CONSTRUCTION, MANUFACTURING OF PRECAST RELATED PRODUCTS, INFRASTRUCTURE CONCESSIONS (RANGING FROM TOLLED HIGHWAYS, PORTS TO IPP), AND OPERATIONS & MAINTENANCE.

MTD’S REAL ESTATE & PROPERTY DIVISION DEVELOPS AND SELLS LARGE INTEGRATED HOUSING AND COMMUNITY PROJECTS AND HIGH-END RESIDENTIAL PROJECTS BOTH LOCALLY AND OVERSEAS.

ADVISED BY

CBRE

CBRE GROUP, INC. (NYSE:CBG), A FORTUNE 500 AND S&P 500 COMPANY HEADQUARTERED IN LOS ANGELES, IS THE WORLD’S LARGEST COMMERCIAL REAL ESTATE SERVICES AND INVESTMENT FIRM (BASED ON 2015 REVENUE). CBRE OFFERS A BROAD RANGE OF INTEGRATED SERVICES, INCLUDING FACILITIES, TRANSACTION AND PROJECT MANAGEMENT; PROPERTY MANAGEMENT; INVESTMENT MANAGEMENT; APPRAISAL AND VALUATION; PROPERTY LEASING; STRATEGIC CONSULTING; PROPERTY SALES; MORTGAGE SERVICES AND DEVELOPMENT SERVICES.

CBRE’S LONDON-BASED TEAM IS UNIQUELY PLACED TO PROVIDE CLIENTS WITH EXPERTISE COVERING EVERY SECTOR OF THE PROPERTY MARKET. THEY ARE ABLE TO COMBINE THEIR GLOBAL NETWORK WITH LOCAL KNOWLEDGE AND SPECIALIST SKILLS TO DELIVER EXCEPTIONAL PROJECTS AND DEVELOPMENTS.

MARKETING SUITE
54 WILSON STREET
LONDON EC2A 2ER
020 7205 2697
ONECROWNPLACE@CBRE.COM
ONECROWNPLACE.COM

Designed by me&dave

1. These particulars are set out as a general outline only for guidance to intending Purchasers or Lessees, and do not constitute any part of an offer or contract. Any intending Purchasers, Lessees or Third Parties should not rely on them as statements or representations of fact, but must satisfy themselves by inspection, searches, enquiries, surveys or otherwise as to their accuracy. CBRE Limited as such cannot be held responsible for any loss or damage including without limitation, indirect or consequential loss or damage, or any loss of profits resulting from direct or indirect actions based upon the content of these particulars. 2. All internal and external images of the development are computer generated images and are indicative only. All images used, including computer generated images and view photography, are for illustrative purposes. Individual features may vary. Furniture shown in images is not included in sales. 3. All floorplans are for approximate measurements only. Exact internal areas, layouts and sizes may vary. All measurements are within a reasonable tolerance in accordance with the sales contract. 4. The development name One Crown Place is for marketing purposes only and the Post Office may not include this within the determined postal address.

